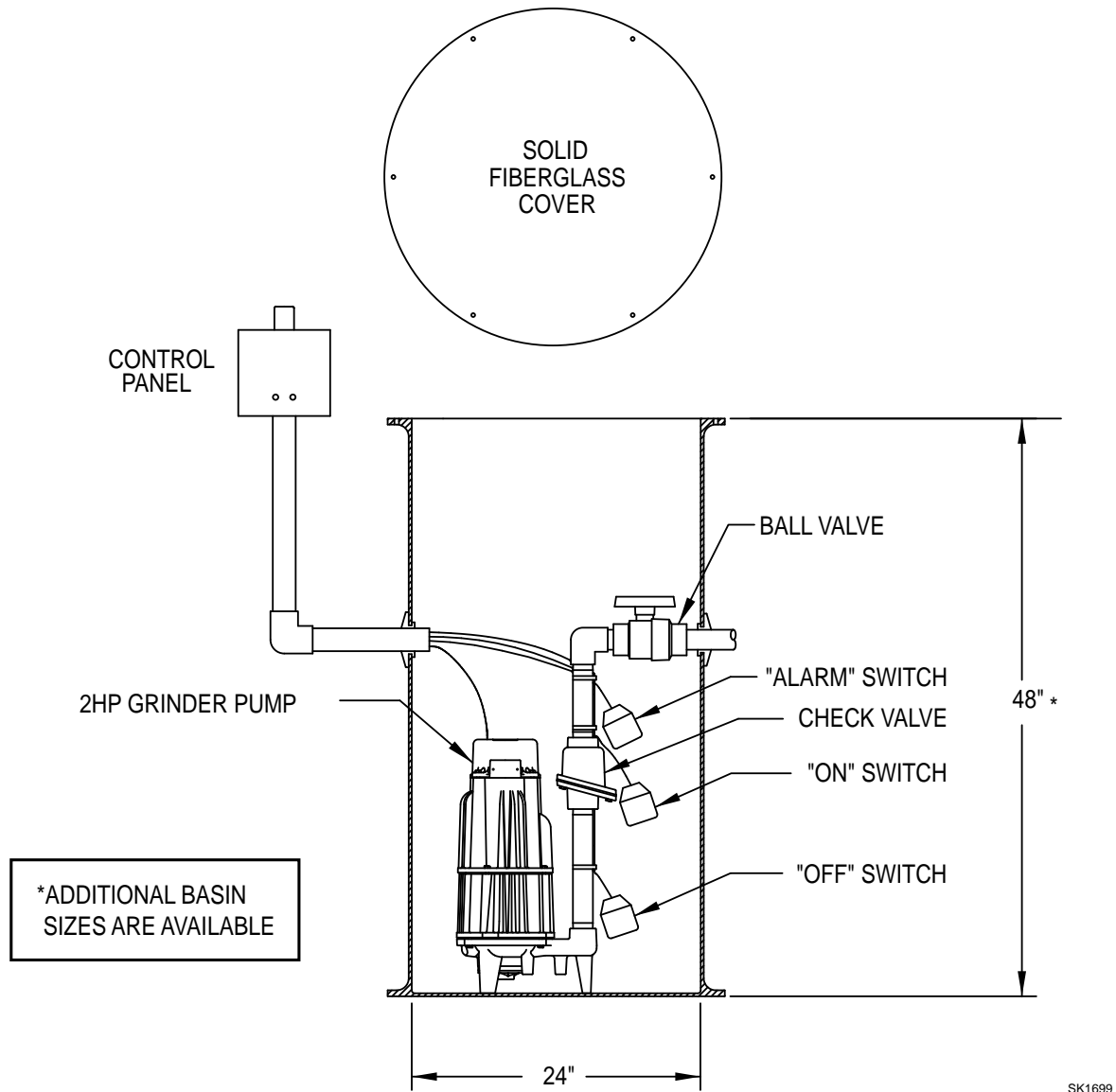


SIMPLEX 840 GRINDER SYSTEM

P/N 920-0006 OUTDOOR FIELD ASSEMBLED



Complete System As Shown Above (P/N 920-0006) Includes:

Qty.	Part No.	Description
1	840-0004	230 Volt, 1 Ph, 2 HP Grinder Pump
1	10-0393	NEMA 4X Simplex Control Panel with Automatic Reversing
3	10-0225	Float Switch with 15' Cord
1	30-0163	1.25" Cast Iron Check Valve
1	30-0175	1.25" Ball Valve
1	31-0866*	24" X 48" Fiberglass Basin with Solid Fiberglass Cover

Loose fittings provided are to be field installed. There is one each of a 1¼", 1½", 2-2", and 4" pipe seal. Discharge pipe and fittings are not included.

Approximate Weight: 260 lbs.

© Copyright 2009 Zoeller Co. All rights reserved.