

Model 003 Cartridge Circulator

The compact Taco 003 Cartridge Circulator is designed for circulating hot and chilled fresh water in open and closed loop, lower flow applications. Reduces erosion corrosion and flow noise in shorter pipe run systems. Its unique, field-serviceable cartridge contains all moving parts. Replacing the cartridge rebuilds the circulator. With no mechanical seal, the self-lubricating, maintenance free design provides quiet, efficient operation and unmatched reliability. Available in low-lead Bronze, sweat or Stainless Steel, Threaded or Union connections.



Stainless Steel



Low-Lead
Compliant



Submittal Data Information Model 003 Cartridge Circulator

Submittal Data # 101-061
Supersedes: 06/01/11

Effective: 04/02/13

Features

- Reduces erosion corrosion and flow noise in shorter pipe run applications
- Standard High Capacity Output - Compact Design
- Quiet, Efficient Operation
- Direct Drive-Low Power Consumption
- Unique Replaceable Cartridge Design-Field Serviceable
- Self Lubricating
- No Mechanical Seal
- Unmatched Reliability-Maintenance Free
- Low-Lead Bronze or Stainless Steel Construction with Sweat, Threaded or Union Connections

Materials of Construction

Casing (Volute):.....Low-Lead Bronze or Stainless Steel
 Stator Housing:.....Steel
 Cartridge:.....Stainless Steel
 Impeller:Non-Metallic
 Shaft:.....Ceramic
 Bearings:.....Carbon
 O-Ring &
 Gaskets:.....EPDM
Chlorine Resistant

Model Nomenclature

B - Bronze, 3/4" Sweat
 BC - Bronze, 1/2" Sweat, Panel Mount Tappings
 ST - Stainless Steel, 3/4" NPT
 SC - Stainless Steel, Union, Panel Mount Tappings

Performance Data

Flow Range: 0 – 7 GPM
 Head Range: 0 – 4.5 Feet
 Min. Fluid Temperature: 40°F (4°C)
 Max. Fluid Temperature: 220°F (104°C)
 Max. Working Pressure: 125 psi
 Connection Sizes:
 1/2" Swt, 3/4" Swt, 3/4" NPT or Union

Certifications & Listings

UL FOR INDOOR USE ONLY
 US LISTED

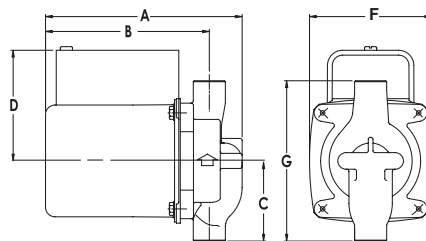
NSF Low-Lead Compliant
 Certified to NSF/ANSI 372

Application

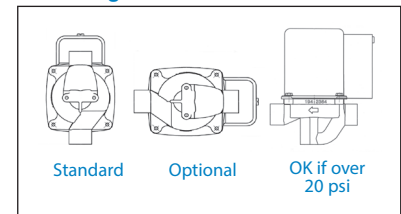
The Taco 003 is designed for circulating hot or chilled fresh water in open or closed loop, lower flow applications. Flow characteristics are ideal for domestic hot water recirculation, heat recovery units, water source heat pumps and potable water systems. The unique, replaceable cartridge contains all of the moving parts and allows for easy service instead of replacing the entire circulator. The compact, low power consumption design is ideal for high efficiency jobs.

Pump Dimensions & Weights

Models	Conn.	A		B		C		D		F		G		Ship Wt.	
		in.	mm	in.	mm	in.	mm	in.	mm	in.	mm	in.	mm	lbs.	Kg
003-B4	3/4" Swt.	5-1/8	130	4-1/8	105	2-3/16	56	3-1/16	78	3-15/16	84	4-13/32	112	6.0	2.7
003-BC4	1/2" Swt.	5-1/8	130	4-1/8	105	2-1/8	54	3-1/16	78	3-15/16	84	4-1/4	108	6.0	2.7
003-ST4	3/4" NPT	5-5/8	143	4-7/8	124	2	51	3-1/16	78	3-15/16	84	4	102	6.0	2.7
003-SC4-1	Union	5-5/32	131	4-11/32	110	2-31/32	76	3-1/16	78	3-15/16	84	5-15/16	151	6.0	2.7



Mounting Positions



Electrical Data

Model	Volts	Hz	Ph	Amps	RPM	HP
All 003 Models	115	60	1	.43	3250	1/40
Motor Type	Permanent Split Capacitor Impedance Protected					
Motor Options	220/50/1, 220/60/1, 230/60/1, 100/110/50/60/1					

Performance Field - 60Hz

