

Cold-Shot[®]

PIPE FREEZE KIT

Cool Idea!

With a Cold-Shot, you don't have to drain water lines, sprinkler systems, or hot water systems before cutting pipe or tubing. It keeps a fully pressurized system operating while you make repairs.

The Cold-Shot freezes liquids in steel, copper, cast iron, aluminum and plastic pipes ranging from 1/8" through 2" (10 to 60mm) using carbon dioxide (CO₂). Dip tube-type CO₂ cylinders are available from any welding supply house.

The Cold-Shot works faster than "refrigerator-type" units, is more compact and less expensive. It's faster and uses less CO₂ than "bag-type" pipe freezers, because the freeze head makes a better seal around the pipe. In five minutes you're ready to go to work on 1/2" copper tubing, and just three minutes for cast iron pipe.

**Save
time, money,
and headaches with
General's Cold-Shot[®]**

General
PIPE CLEANERS

The toughest tools down the line.[™]

Cold-Shot[®]

PIPE FREEZE KIT



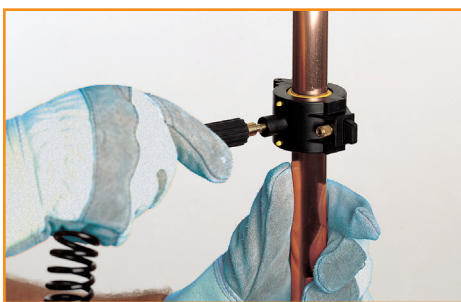
The Cold-Shot is easy to use. Just place the freeze head around the pipe, attach the hose, and open the cylinder valve. Liquid carbon dioxide will flow into the freeze head and form dry ice with a temperature of minus 110F° (-79C°). That's cold enough to form an ice pack that can withstand 7,000 psi, yet won't damage pipes.



Kit includes 10 sets of freeze heads for 1/8" to 2" lines (10mm to 60mm), two high pressure spiral hoses with injectors, T-distributor, locking nut, hex head screwdriver, rubber gloves, goggles and carrying case.



The freezing times and CO₂ requirements in the table below are general guidelines based on a water temperature 68 F° (20C°). These figures will vary for other temperatures. Longer freezing times are required for plastic pipe.



FREEZE HEAD SIZE	MATERIAL	FREEZING TIME	FREEZE OPERATIONS PER FREEZE HEAD PER 20 LBS (10 kg) CYLINDER
1/8"	Steel	1 min.	165
(10/12mm)	Copper	1 min.	160
1/4"	Steel	1 min.	130
(15 mm)	Copper	2 min.	75
3/8"	Steel	2 min.	65
(18 mm)	Copper	3 min.	50
1/2"	Steel	3 min.	45
(22 mm)	Copper	5 min.	30
3/4"	Steel	5 min.	29
(28 mm)	Copper	7 min.	22
1"	Steel	7 min.	20
(35 mm)	Copper	10 min.	15
1-1/4"	Steel	11 min.	15
(42 mm)	Copper	14 min.	11
1-1/2"	Steel	16 min.	10
(54 mm)	Copper	24 min.	7
2"	Steel	29 min.	5
(60 mm)	Copper	40 min.	2

Cat. No.	Boxed Wt.
CST-2	
Cold-Shot Pipe Freeze Kit	12 lbs.

General / **General Wire Spring Co.**
PIPE CLEANERS
 1101 Thompson Avenue • McKees Rocks, PA 15136 USA
 800-245-6200 or 412-771-6300 • Fax: 412-771-2771
 Web Site: www.drainbrain.com