

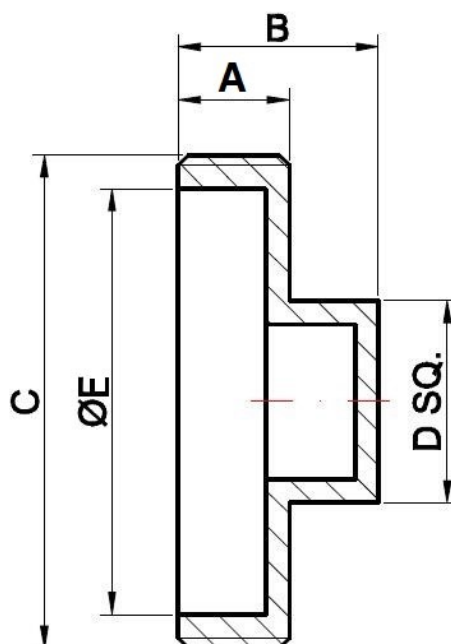
- Southern Code Brass Cleanout Plug
- Screw-on Connection
- Raised Head
- Gauged and Precisely Patterned for an Accurate Fit
- Finely Machined Threads Help Prevent Installation Problems



All dimensions in inches

Part#	Description	Dimensions				
		A	B	C	D	E
4PRO2BRRHCOP	2" Raised Head Brass Cleanout Plug	0.429	0.780	2"- 11.5 NPT	1.000	2.122
4PRO3BRRHCOP	3" Raised Head Brass Cleanout Plug	0.429	0.807	3"- 8 NPT	1.189	3.201
4PRO312BRRHCOP	3-1/2" Raised Head Brass Cleanout Plug	0.429	0.807	3-1/2"- 8 NPT	1.421	3.681
4PRO4BRRHCOP	4" Raised Head Brass Cleanout Plug	0.429	0.866	4"- 8 NPT	1.358	4.161

Product Drawing:



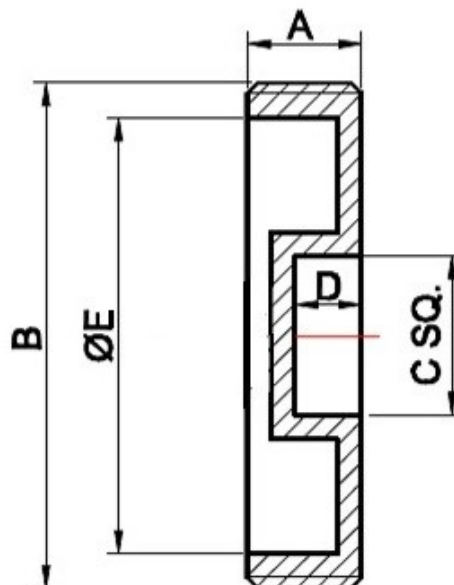
- Southern Code Brass Cleanout Plug
- Screw-on Connection
- Countersunk
- Gauged and Precisely Patterned for an Accurate Fit
- Finely Machined Threads Help Prevent Installation Problems



All dimensions in inches

Part#	Description	Dimensions				
		A	B	C	D	E
4PRO3BRCSCOP	3" Countersunk Head Brass Cleanout Plug	0.429	3"- 8 NPT	1.051	0.335	3.201
4PRO312BRCSCOP	3-1/2" Countersunk Head Brass Cleanout Plug	0.429	3-1/2"- 8 NPT	1.181	0.335	3.681
4PRO4BRCSCOP	4" Countersunk Head Brass Cleanout Plug	0.429	4"- 8 NPT	1.181	0.319	4.161

Product Drawing:



- Heavy Duty Brass Cleanout Plug
- Screw-on Connection
- Hexagonal Raised Head
- Gauged and Precisely Patterned for an Accurate Fit
- Finely Machined Threads Help Prevent Installation Problems



Part#	Description
4PRO312BRHDRHCOP	3-1/2" Raised Head Heavy Pattern Brass Cleanout Plug

Product Drawing:

