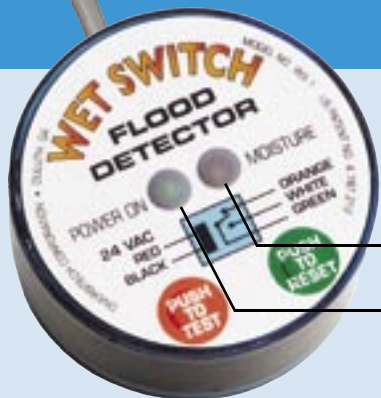


SPECIFICATIONS



Indicators:

- Red LED: Moisture Detected
- Green LED: Power

Power Requirements:

- 18-30 VAC, 60 Hz.
- 20-30 VAC, 50 Hz.
- 1.5 Watts Max (wet), <0.5 Watts (dry)

Relay:

- Isolated Contacts
- 2 Amps: NC Contact
- 2 Amps: NO Contact

ORDERING INFORMATION



CATALOG NO.
WS-1

UPC
6 86109 99004 8

Specify DiversiTech catalog no. **WS-1** to order the Wet Switch from your wholesale distributor or contractor.

Call **800.995.2222** for the one nearest you.

About DiversiTech

DiversiTech Corporation is North America's largest manufacturer of equipment pads and a leading manufacturer and supplier of components and related products for the heating, ventilating, air conditioning, and refrigeration (HVACR) industry.

Headquartered in the Atlanta, GA metropolitan area, DiversiTech manufactures a suite of products, which includes a wide range of mechanical, electrical, chemical, and structural parts for HVACR systems. The company maintains manufacturing and distribution facilities in key U.S. locations and in the Far East. DiversiTech has enjoyed a continued history of successful growth and has acquired industry-recognized brand names including Wagner Manufacturing and Specialty Chemical.

NEW!
Now with
TEST and RESET
Buttons

WET SWITCH™

Download an electronic version of this brochure at:
www.diversitech.com/literature/lit-fly-ws.pdf

DiversiTech Corporation
6650 Sugarloaf Parkway
Duluth, GA 30097
800.995.2222
678.542.3700 FAX
www.diversitech.com

U.S. Patent No. 4,787,212
©2005 DiversiTech Corporation
LIT-FLY-WS, 1/06

WAGNER
MANUFACTURING
A DiversiTech Company

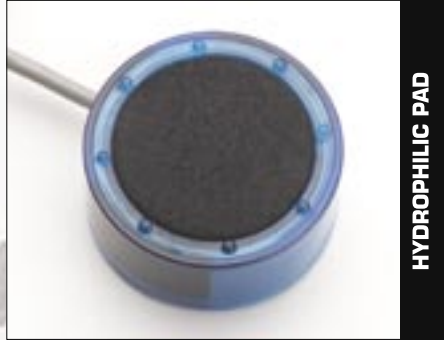
WHAT IS THE WET SWITCH?

The Wet Switch is a solid state device designed to detect the presence of condensate water overflow. The Wet Switch is placed into the secondary drain pan — a normally dry pan. If the primary drain pan fails, condensate water will overflow into the secondary drain pan. Upon sensing moisture, the Wet Switch will turn the system off (typically the cause of the condensing water) to help prevent damage to carpets, walls, woodwork, ceilings, and other property.

- Hydrophilic Pad
- Integral Feet
- Stainless Steel Sensor Array
- Solid State Electronics
- Epoxy Encapsulated Electronics
- Double Throw Relay
- Standard 24VAC control
- Multiple Unit Connectivity

The Wet Switch is designed to interrupt the operation of cooling systems. However, it is a water activated switch, and can be used in a variety of other applications.

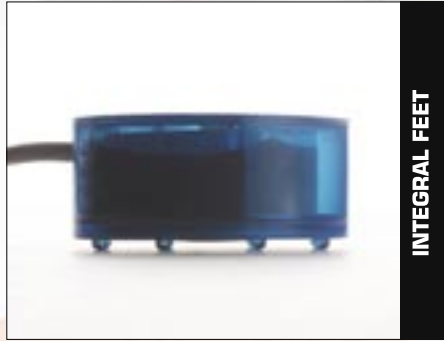
FEATURES AND BENEFITS OF THE WET SWITCH



HYDROPHILIC PAD

Hydrophilic Pad

A high tech polymeric fiber quickly draws water into the sensor array using proven capillary technology.



INTEGRAL FEET

Integral Feet

Integral feet raise the hydrophilic pad and sensor array off the drain pan slightly to prevent nuisance tripping, and pan corrosion (metal pans only) from interfering with the sensor array.

Stainless Steel Sensor Array

A high tech array of multiple stainless steel sensors detects even a minimal amount of water drawn into the hydrophilic pad.



STAINLESS STEEL SENSORS



Compact Package

This technology is packed into a 3-5/8" diameter by 1-1/4" high cylinder. Furnished complete with 5-conductor 22AWG stranded cable, 6' long.

Solid State Electronics

Proven electronics prevent mechanical failure in an aggressive operating environment.

Multiple Unit Connectivity

Multiple unit connectivity allows for multiple Wet Switches to be connected in series to adequately cover large drain pan areas.

Double Throw Relay

Allows for wiring to interrupt system and to sound an alarm (by others) when moisture is detected.