

# ProPEX lead-free (LF) brass and brass coupling

## Project Information

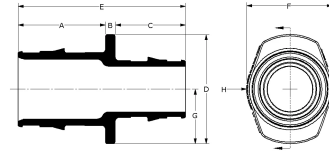
Job name:	Location:
Engineer:	Date submitted:
Contractor:	Submitted by:
Manufacturer's representative:	Approved by:

## Technical data

Temp/pressure ratings	73 °F (23 °C) at 160 psi (11 bar)
	180 °F (82 °C) at 100 psi (6.9 bar)
	200 °F (93 °C) at 80 psi (5.5 bar)
Prop 65 label required?	Yes

## Product information and application use

ProPEX® lead-free (LF) brass couplings are available for use in hot and cold domestic potable water and hydronic heating and cooling systems. The coupling features the Uponor ProPEX fitting for connections to Wirsbo hePEX™ tubing or Uponor AquaPEX® tubing. Couplings are safe for direct burial in soil.



Part name	Part no.	A [inch]	B [inch]	C [inch]	D [inch]	E [inch]	F [inch]	G [inch]	H [inch]	Weight per UOM [lbs/UOM]	Material group
ProPEX LF Brass Coupling, 1" PEX x 1" PEX	LF4541010	1.181	0.125	1.181	1.38	2.487	1.38	0.69	0.69	0.2	-
ProPEX LF Brass Coupling, 3/8" PEX x 1/2" PEX	LF4543850	0.709	0.125	0.591	0.74	1.425	0.74	0.37	0.37	0.05	-
ProPEX LF Brass Coupling, 1/2" PEX x 1/2" PEX	LF4545050	0.709	0.125	0.709	0.79	1.543	0.79	0.395	0.395	0.07	-
ProPEX LF Brass Coupling, 3/4" PEX x 1" PEX	LF4547510	0.945	0.125	1.181	1.38	2.251	1.38	0.69	0.69	0.16	-
ProPEX LF Brass Coupling, 3/4" PEX x 3/4" PEX	LF4547575	0.945	0.125	0.945	1.1	2.015	1.1	0.55	0.55	0.13	-
ProPEX Brass Coupling, 5/8" PEX x 5/8" PEX	Q4546363	0.866	0.125	0.866	0.94	1.857	0.94	0.47	0.47	0.08	-

Part name	Part no.	End Type 1	End Type 2
ProPEX LF Brass Coupling, 1" PEX x 1" PEX	LF4541010	ProPEX 1"	ProPEX 1"
ProPEX LF Brass Coupling, 3/8" PEX x 1/2" PEX	LF4543850	ProPEX 3/8"	ProPEX 1/2"
ProPEX LF Brass Coupling, 1/2" PEX x 1/2" PEX	LF4545050	ProPEX 1/2"	ProPEX 1/2"
ProPEX LF Brass Coupling, 3/4" PEX x 1" PEX	LF4547510	ProPEX 3/4"	ProPEX 1"
ProPEX LF Brass Coupling, 3/4" PEX x 3/4" PEX	LF4547575	ProPEX 3/4"	ProPEX 3/4"
ProPEX Brass Coupling, 5/8" PEX x 5/8" PEX	Q4546363	ProPEX 5/8"	ProPEX 5/8"

## Installation

ProPEX tools and ProPEX rings (sold separately) are required for connecting the PEX tubing. Use the appropriately sized Uponor ProPEX ring for tubing connections. For more information, refer to the Uponor AquaPEX professional plumbing installation guide, the Uponor AquaSAFETM residential fire sprinkler installation guide or the Uponor radiant floor heating installation handbook.

## Related applications

- PEX-a Plumbing Systems
- Uponor Residential Fire Safety Systems
- Radiant Heating and Cooling Systems
- Permafrost Protection Systems
- Turf Conditioning Systems

## Codes

IMC|IBC|IRC|NPC of Canada|UMC\*

## Standards

ASTM F1960|CSA B137.5|NSF-14|ASTM F877\*

## Listings

IAPMO-ES|ICC-ES-PMG|cNSFus-rfh\*

## Footnotes

\* Some SKUs in this family have additional codes, standards, or listings. Please see [uponor.com](http://uponor.com) for complete information.

## Contact information

Uponor Inc.  
5925 148th Street West  
Apple Valley, MN 55124  
T 800.321.4739  
F 952.891.2008

Uponor Ltd.  
6510 Kennedy Road  
Mississauga, ON L5T 2X4  
T 888.594.7726  
F 800.638.9517