

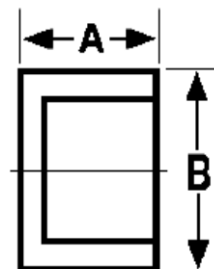
The Best Products, The Best Service...

SERVICE METAL

ONE CALL GETS IT ALL



Socket Weld Cap 3000# Forged Steel Inches / Pounds



Size	A	B	Approximate Weight (in Pounds)
1/8	0.63	0.75	0.06
1/4	0.63	1.00	0.08
3/8	0.69	1.06	0.15
1/2	0.81	1.31	0.25
3/4	0.81	1.50	0.33
1	0.94	1.88	0.49
1 1/4	0.94	2.25	0.88
1 1/2	1.00	2.50	1.14
2	1.19	3.00	1.80
2 1/2	1.31	3.63	2.90
3	1.50	4.25	4.23
4	1.75	5.50	7.55

**ASTM SA-105, ANSI B16.11*