

**For Residential and Commercial Applications**

Job Name		Engineer / Architect	
Job Location		Wholesaler	
Submittal Date		Contractor	

## 1-12DE/ 1-20DE/ 1-30DE/ 3-12DE    Copper Toilet Riser w/ Heavy Duty Rubber Nosepiece

**Use:** For use in potable water distribution systems in accessible locations only.

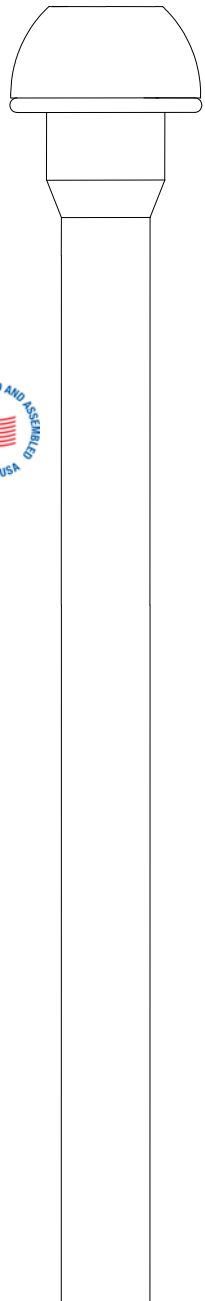
**Design Features:**

- **One-piece construction**
- **Cut to Length** for professional finished appearance

**Operating Specifications:**

**Temperature:** 40°- 180° F  
**Pressure:** 125 psi maximum

**Tubing Diameter:** 0.38" O.D. or 0.50" O.D.



<b>MATERIAL SPECIFICATIONS</b>	
<b>Tube</b>	C12200 copper per ASTM B-68
<b>Nosepiece Support</b>	POM
<b>Washer</b>	EPDM rubber

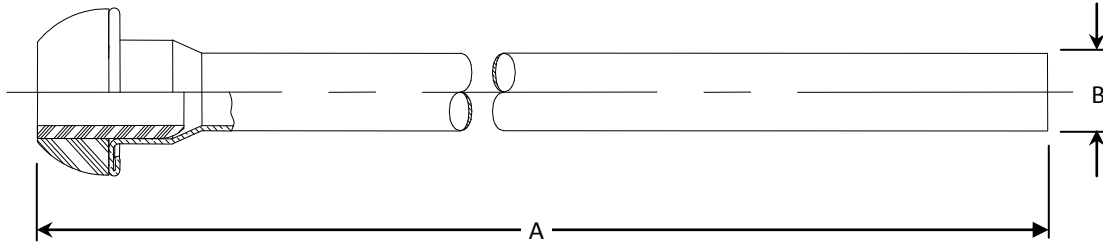
**Part Listing:**

- 1-12DE C      3/8" OD Tube x 11-1/2" Length, chrome plated
- 1-12DE CBT    3/8" OD Tube x 11-1/2" Length, chrome plated, plain label, bulk
- 1-12DE-1 R    3/8" OD Tube x 11-1/2" Length, no washer, rough finish
- 1-12DE BZP    3/8" OD Tube x 11-1/2" Length, oil rubbed bronze, bagged
- 1-12DE NSP    3/8" OD Tube x 11-1/2" Length, satin nickel, bagged
- 1-20DE C      3/8" OD Tube x 19-1/2" Length, chrome plated
- 1-20DE CBT    3/8" OD Tube x 19-1/2" Length, chrome plated, plain label, bulk
- 1-20DE-1 R    3/8" OD Tube x 19-1/2" Length, no washer, rough finish
- 1-20DE BZP    3/8" OD Tube x 19-1/2" Length, oil rubbed bronze, bagged
- 1-20DE NSP    3/8" OD Tube x 19-1/2" Length, satin nickel, bagged
- 1-30DE C      3/8" OD Tube x 29-1/2" Length, chrome plated
- 3-12DE C      1/2" OD Tube x 11-1/2" Length, chrome plated

*This specification and all information contained herein is the confidential and exclusive property of BrassCraft Manufacturing, and shall not be disclosed to others without the written consent of BrassCraft. This specification must be returned to BrassCraft if requested.*



# 1-12DE/ 1-20DE/ 1-30DE/ 3-12DE Copper Toilet Riser w/ Heavy Duty Rubber Nosepiece



PART DIMENSIONS (Inches)		
Model	DIM. A	DIA. B
1-12DE	11.56	3/8
1-20DE	19.56	3/8

PART DIMENSIONS (Inches)		
Model	DIM. A	DIA. B
1-30DE	29.56	3/8
3-12DE	11.56	1/2

**Listings & Certifications:**

- IAPMO listed to ASME A112.18.1-2005 / CSA B125.1-2005 (File # 0645)

