

# CLASS 150 SS304 & SS316 HEAVY STAINLESS STEEL FITTINGS-MSS SP114

## MATERIAL SPECIFICATIONS:

- ASTM A351 Austenitic Steel Castings

## DIMENSIONAL SPECIFICATIONS:

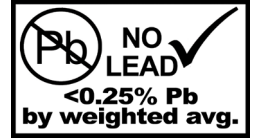
- MSS SP114 Corrosion Resistant Threaded Fittings

## THREAD SPECIFICATIONS:

- ANSI/ASME B1.20.1 Pipe Threads

## CERTIFICATION:

- NSF/ANSI 372 Certified
- CRNs are available



MATERIAL LIST		
Name	Percent of Composition	
	304	316
Carbon (C)	0.08 Max	0.08 Max
Manganese (Mn)	1.50 Max	1.50 Max
Silicone (Si)	2.00 Max	1.50 Max
Sulfur (S)	0.040 Max	0.040 Max
Phosphorus (P)	0.040 Max	0.040 Max
Chromium (Cr)	18.0-21.0	18.0-21.0
Nickel (Ni)	8.0-11.0	9.0-12.0
Molybdenum (Mo)	0.50 Max	2.0-3.0



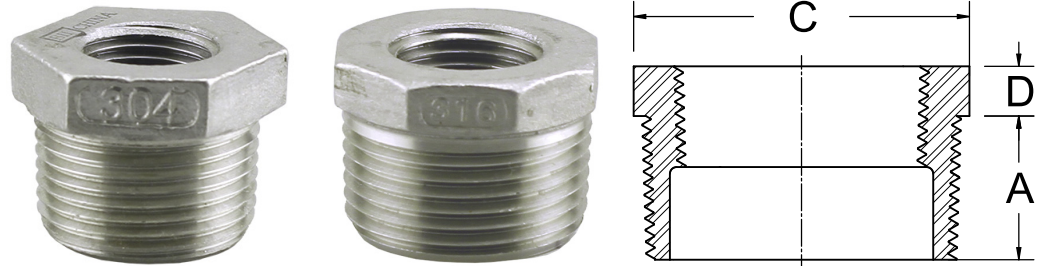
**BOSHART**  
INDUSTRIES

25 Whaley Avenue, PO Box 310, Milverton, ON CANADA N0K 1M0  
Tel: 800-561-3164

[boshart.com](http://boshart.com) ♦ [blog.boshart.com](http://blog.boshart.com)

# CLASS 150 HEAVY 304 / 316 STAINLESS FITTINGS - MSS SP114

## Bushing - MPT x FPT

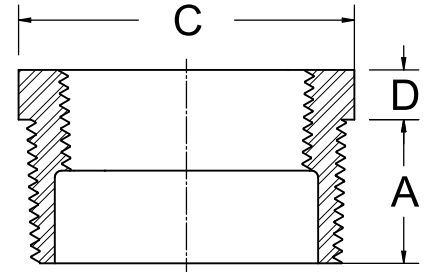


\* Octagon Head  $\diamond$ 10 Sided Head

304SS	316SS	Size	A		D		C	
			Inch	mm	Inch	mm	Inch	mm
SSH304B-0201	SSH316B-0201	1/4" x 1/8"	0.46	11.7	0.24	6.0	0.63	15.9
SSH304B-0301	SSH316B-0301	3/8" x 1/8"	0.51	13.0	0.24	6.0	0.75	19.1
SSH304B-0302	SSH316B-0302	3/8" x 1/4"	0.51	13.0	0.24	6.0	0.75	19.1
SSH304B-0501-3	SSH316B-0501-3	1/2" x 1/8"	0.59	15.0	0.24	6.0	0.94	24.0
SSH304B-0502	SSH316B-0502	1/2" x 1/4"	0.59	15.0	0.24	6.0	0.94	24.0
SSH304B-0503	SSH316B-0503	1/2" x 3/8"	0.59	15.0	0.24	6.0	0.94	24.0
SSH304B-0701-3	SSH316B-0701-3	3/4" x 1/8"	0.71	18.0	0.31	8.0	1.15	29.2
SSH304B-0702-3	SSH316B-0702-3	3/4" x 1/4"	0.71	18.0	0.31	8.0	1.15	29.2
SSH304B-0703	SSH316B-0703	3/4" x 3/8"	0.71	18.0	0.31	8.0	1.15	29.2
SSH304B-0705	SSH316B-0705	3/4" x 1/2"	0.71	18.0	0.31	8.0	1.15	29.2
SSH304B-1002-3	SSH316B-1002-3	1" x 1/4"	0.75	19.1	0.31	8.0	1.38	34.9
SSH304B-1003-3	SSH316B-1003-3	1" x 3/8"	0.75	19.1	0.31	8.0	1.38	34.9
SSH304B-1005	SSH316B-1005	1" x 1/2"	0.75	19.1	0.31	8.0	1.38	34.9
SSH304B-1007	SSH316B-1007	1" x 3/4"	0.75	19.1	0.31	8.0	1.38	34.9
SSH304B-1202-3	SSH316B-1202-3	1-1/4" x 1/4"	0.81	20.6	0.35	9.0	1.75	44.5
SSH304B-1203-3	SSH316B-1203-3	1-1/4" x 3/8"	0.81	20.6	0.35	9.0	1.75	44.5
SSH304B-1205-3	SSH316B-1205-3	1-1/4" x 1/2"	0.81	20.6	0.35	9.0	1.75	44.5
SSH304B-1207	SSH316B-1207	1-1/4" x 3/4"	0.81	20.6	0.35	9.0	1.75	44.5
SSH304B-1210	SSH316B-1210	1-1/4" x 1"	0.81	20.6	0.35	9.0	1.75	44.5
SSH304B-1505-3	SSH316B-1505-3	1-1/2" x 1/2"	0.81	20.6	0.35	9.0	2.00	50.8
SSH304B-1507-3	SSH316B-1507-3	1-1/2" x 3/4"	0.81	20.6	0.35	9.0	2.00	50.8
SSH304B-1510	SSH316B-1510	1-1/2" x 1"	0.81	20.6	0.35	9.0	2.00	50.8
SSH304B-1512	SSH316B-1512	1-1/2" x 1-1/4"	0.81	20.6	0.35	9.0	2.00	50.8
SSH304B-2005-3	SSH316B-2005-3	2" x 1/2"	1.00	25.4	0.34	8.6	2.50	63.5
SSH304B-2007-3	SSH316B-2007-3	2" x 3/4"	1.00	25.4	0.34	8.6	2.50	63.5
SSH304B-2010-3	SSH316B-2010-3	2" x 1"	1.00	25.4	0.34	8.6	2.50	63.5
SSH304B-2012	SSH316B-2012	2" x 1-1/4"	1.00	25.4	0.34	8.6	2.50	63.5
SSH304B-2015	SSH316B-2015	2" x 1-1/2"	1.00	25.4	0.34	8.6	2.50	63.5

# CLASS 150 HEAVY 304 / 316 STAINLESS FITTINGS - MSS SP114

## Bushing - MPT x FPT

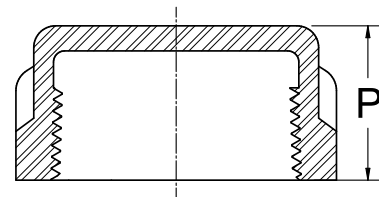


\* Octagon Head  $\diamond$ 10 Sided Head

304SS	316SS	Size	A		D		C	
			Inches	mm	Inches	mm	Inches	mm
SSH304B-2510-3 *	SSH316B-2510-3 *	2-1/2" x 1"	1.26	32.0	0.47	12.0	3.07	78.0
SSH304B-2512-3 *	SSH316B-2512-3 *	2-1/2" x 1-1/4"	1.26	32.0	0.47	12.0	3.07	78.0
SSH304B-2515 *	SSH316B-2515 *	2-1/2" x 1-1/2"	1.26	32.0	0.47	12.0	3.07	78.0
SSH304B-2520 *	SSH316B-2520 *	2-1/2" x 2"	1.26	32.0	0.47	12.0	3.07	78.0
SSH304B-3020 *	SSH316B-3020 *	3" x 2"	1.36	34.5	0.45	11.5	3.62	92.0
SSH304B-3025 *	SSH316B-3025 *	3" x 2-1/2"	1.36	34.5	0.45	11.5	3.74	95.0
SSH304B-4020-3 $\diamond$	SSH316B-4020-3 $\diamond$	4" x 2"	1.50	38.0	0.50	12.7	4.63	117.5
SSH304B-4025-3 $\diamond$	SSH316B-4025-3 $\diamond$	4" x 2-1/2"	1.50	38.0	0.50	12.7	4.63	117.5
SSH304B-4030-3 $\diamond$	SSH316B-4030-3 $\diamond$	4" x 3"	1.50	38.0	0.50	12.7	4.63	117.5

## Cap - FPT

304SS	316SS	Size	P	
			Inches	mm
SSH304CA-01	SSH316CA-01	1/8"	0.68	17.3
SSH304CA-02	SSH316CA-02	1/4"	0.70	17.8
SSH304CA-03	SSH316CA-03	3/8"	0.81	20.6
SSH304CA-05	SSH316CA-05	1/2"	0.93	23.6
SSH304CA-07	SSH316CA-07	3/4"	1.06	26.9
SSH304CA-10	SSH316CA-10	1"	1.31	33.3
SSH304CA-12	SSH316CA-12	1-1/4"	1.62	41.1
SSH304CA-15	SSH316CA-15	1-1/2"	1.62	41.1
SSH304CA-20	SSH316CA-20	2"	1.75	44.5
SSH304CA-25	SSH316CA-25	2-1/2"	2.00	50.8
SSH304CA-30	SSH316CA-30	3"	2.25	57.2
SSH304CA-40	SSH316CA-40	4"	2.50	63.5

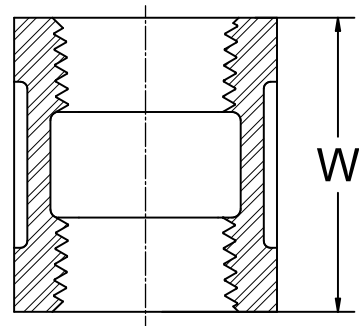


# CLASS 150 HEAVY 304 / 316 STAINLESS FITTINGS - MSS SP114

## Coupling - FPT



304SS	316SS	Size	W	
			Inches	mm
SSH304C-01	SSH316C-01	1/8"	1.00	25.4
SSH304C-02	SSH316C-02	1/4"	1.00	25.4
SSH304C-03	SSH316C-03	3/8"	1.12	28.4
SSH304C-05	SSH316C-05	1/2"	1.38	35.1
SSH304C-07	SSH316C-07	3/4"	1.50	38.1
SSH304C-10	SSH316C-10	1"	1.62	41.1
SSH304C-12	SSH316C-12	1-1/4"	2.00	50.8
SSH304C-15	SSH316C-15	1-1/2"	2.12	53.8
SSH304C-20	SSH316C-20	2"	2.50	63.5
SSH304C-25	SSH316C-25	2-1/2"	2.87	72.9
SSH304C-30	SSH316C-30	3"	3.18	80.8
SSH304C-40	SSH316C-40	4"	3.68	93.5

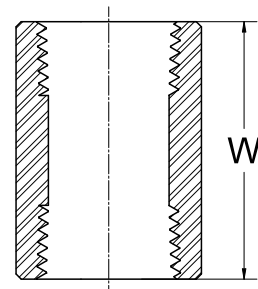


## Merchant Coupling - FPT

Threads are NPT taper tapped



304SS	316SS	Size	W	
			Inches	mm
SSH304MC-05	SSH316MC-05	1/2"	1.38	35.1
SSH304MC-07	SSH316MC-07	3/4"	1.50	38.1
SSH304MC-10	SSH316MC-10	1"	1.62	41.1
SSH304MC-12	SSH316MC-12	1-1/4"	2.00	50.8
SSH304MC-15	SSH316MC-15	1-1/2"	2.12	53.8
SSH304MC-20	SSH316MC-20	2"	2.50	63.5



**BOSHART**  
INDUSTRIES

25 Whaley Avenue, PO Box 310, Milverton, ON CANADA N0K 1M0  
Tel: 800-561-3164

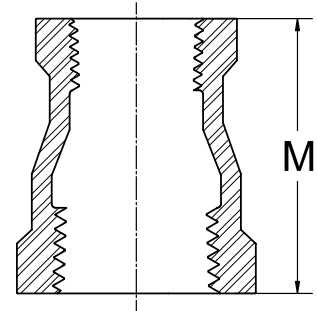
[boshart.com](http://boshart.com) ♦ [blog.boshart.com](http://blog.boshart.com)

# CLASS 150 HEAVY 304 / 316 STAINLESS FITTINGS - MSS SP114

## Reducing Coupling - FPT

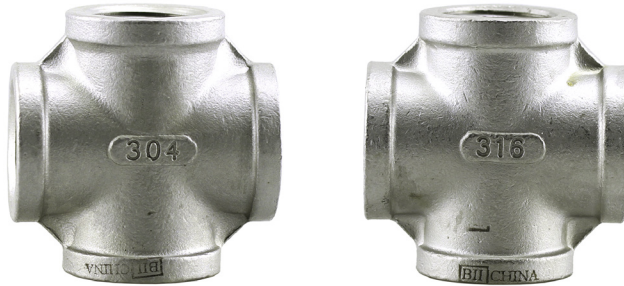


304SS	316SS	Size	M	
			Inches	mm
SSH304RC-0201	SSH316RC-0201	1/4" x 1/8"	1.00	25.4
SSH304RC-0301	SSH316RC-0301	3/8" x 1/8"	1.12	28.4
SSH304RC-0302	SSH316RC-0302	3/8" x 1/4"	1.12	28.4
SSH304RC-0501-3	SSH316RC-0501-3	1/2" x 1/8"	1.38	35.1
SSH304RC-0502	SSH316RC-0502	1/2" x 1/4"	1.38	35.1
SSH304RC-0503	SSH316RC-0503	1/2" x 3/8"	1.38	35.1
SSH304RC-0702-3	SSH316RC-0702-3	3/4" x 1/4"	1.50	38.1
SSH304RC-0703	SSH316RC-0703	3/4" x 3/8"	1.50	38.1
SSH304RC-0705	SSH316RC-0705	3/4" x 1/2"	1.50	38.1
SSH304RC-1003-3	SSH316RC-1003-3	1" x 3/8"	1.62	41.1
SSH304RC-1005	SSH316RC-1005	1" x 1/2"	1.62	41.1
SSH304RC-1007	SSH316RC-1007	1" x 3/4"	1.62	41.1
SSH304RC-1205-3	SSH316RC-1205-3	1-1/4" x 1/2"	2.00	50.8
SSH304RC-1207	SSH316RC-1207	1-1/4" x 3/4"	2.00	50.8
SSH304RC-1210	SSH316RC-1210	1-1/4" x 1"	2.00	50.8
SSH304RC-1505-3	SSH316RC-1505-3	1-1/2" x 1/2"	2.12	53.8
SSH304RC-1507-3	SSH316RC-1507-3	1-1/2" x 3/4"	2.12	53.8
SSH304RC-1510	SSH316RC-1510	1-1/2" x 1"	2.12	53.8
SSH304RC-1512	SSH316RC-1512	1-1/2" x 1-1/4"	2.12	53.8
SSH304RC-2005-3	SSH316RC-2005-3	2" x 1/2"	2.50	63.5
SSH304RC-2007-3	SSH316RC-2007-3	2" x 3/4"	2.50	63.5
SSH304RC-2010-3	SSH316RC-2010-3	2" x 1"	2.50	63.5
SSH304RC-2012	SSH316RC-2012	2" x 1-1/4"	2.50	63.5
SSH304RC-2015	SSH316RC-2015	2" x 1-1/2"	2.50	63.5
SSH304RC-2515	SSH316RC-2515	2-1/2" x 1-1/2"	3.25	82.6
SSH304RC-2520	SSH316RC-2520	2-1/2" x 2"	3.25	82.6
SSH304RC-3020	SSH316RC-3020	3" x 2"	3.68	93.5
SSH304RC-3025	SSH316RC-3025	3" x 2-1/2"	3.68	93.5
SSH304RC-4020-3	SSH316RC-4020-3	4" x 2"	4.38	111.3
SSH304RC-4025	SSH316RC-4025	4" x 2-1/2"	4.38	111.3
SSH304RC-4030	SSH316RC-4030	4" x 3"	4.38	111.3

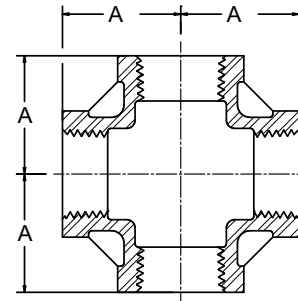


# CLASS 150 HEAVY 304 / 316 STAINLESS FITTINGS - MSS SP114

## Cross - FPT



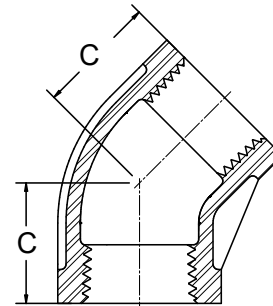
304SS	316SS	Size	A	
			Inches	mm
SSH304CR-05	SSH316CR-05	1/2"	1.12	28.4
SSH304CR-07	SSH316CR-07	3/4"	1.31	33.3
SSH304CR-10	SSH316CR-10	1"	1.50	38.1
SSH304CR-12	SSH316CR-12	1-1/4"	1.75	44.5
SSH304CR-15	SSH316CR-15	1-1/2"	1.93	49.0
SSH304CR-20	SSH316CR-20	2"	2.25	57.2



## 45° Elbow - FPT



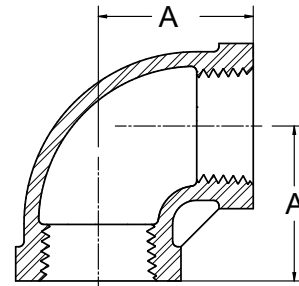
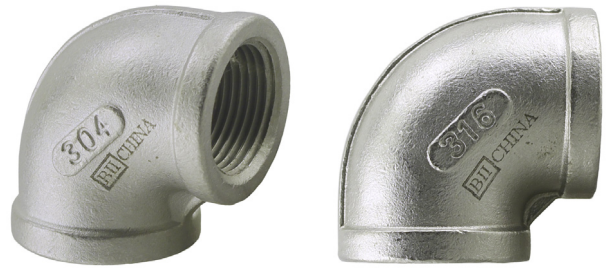
304SS	316SS	Size	C	
			Inches	mm
SSH304E4-01	SSH316E4-01	1/8"	0.69	17.5
SSH304E4-02	SSH316E4-02	1/4"	0.69	17.5
SSH304E4-03	SSH316E4-03	3/8"	0.81	20.6
SSH304E4-05	SSH316E4-05	1/2"	0.87	22.1
SSH304E4-07	SSH316E4-07	3/4"	1.00	25.4
SSH304E4-10	SSH316E4-10	1"	1.12	28.4
SSH304E4-12	SSH316E4-12	1-1/4"	1.31	33.3
SSH304E4-15	SSH316E4-15	1-1/2"	1.43	36.3
SSH304E4-20	SSH316E4-20	2"	1.68	42.7
SSH304E4-25	SSH316E4-25	2-1/2"	1.93	49.0
SSH304E4-30	SSH316E4-30	3"	2.18	55.4
SSH304E4-40	SSH316E4-40	4"	2.62	66.5



# CLASS 150 HEAVY 304 / 316 STAINLESS FITTINGS - MSS SP114

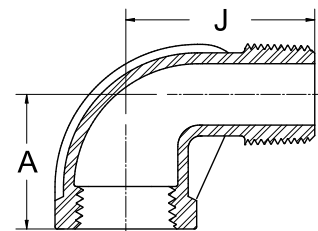
## 90° Elbow - FPT

304SS	316SS	Size	A	
			Inches	mm
SSH304E-01	SSH316E-01	1/8"	0.81	20.6
SSH304E-02	SSH316E-02	1/4"	0.81	20.6
SSH304E-03	SSH316E-03	3/8"	0.93	23.6
SSH304E-05	SSH316E-05	1/2"	1.12	28.4
SSH304E-07	SSH316E-07	3/4"	1.31	33.3
SSH304E-10	SSH316E-10	1"	1.50	38.1
SSH304E-12	SSH316E-12	1-1/4"	1.75	44.5
SSH304E-15	SSH316E-15	1-1/2"	1.93	49.0
SSH304E-20	SSH316E-20	2"	2.25	57.2
SSH304E-25	SSH316E-25	2-1/2"	2.68	68.1
SSH304E-30	SSH316E-30	3"	3.06	77.7
SSH304E-40	SSH316E-40	4"	3.81	96.8



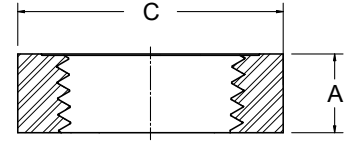
## 90° Street Elbow - MPT x FPT

304SS	316SS	Size	A		J	
			Inches	mm	Inches	mm
SSH304SE-01	SSH316SE-01	1/8"	0.81	20.6	1.06	26.9
SSH304SE-02	SSH316SE-02	1/4"	0.81	20.6	1.18	30.0
SSH304SE-03	SSH316SE-03	3/8"	0.93	23.6	1.43	36.3
SSH304SE-05	SSH316SE-05	1/2"	1.12	28.4	1.62	41.1
SSH304SE-07	SSH316SE-07	3/4"	1.31	33.3	1.87	47.5
SSH304SE-10	SSH316SE-10	1"	1.50	38.1	2.12	53.8
SSH304SE-12	SSH316SE-12	1-1/4"	1.75	44.5	2.50	63.5
SSH304SE-15	SSH316SE-15	1-1/2"	1.93	49.0	2.75	69.9
SSH304SE-20	SSH316SE-20	2"	2.25	57.2	3.25	82.6
SSH304SE-25	SSH316SE-25	2-1/2"	2.68	68.1	3.87	98.3
SSH304SE-30	SSH316SE-30	3"	3.06	77.7	4.50	114.3
SSH304SE-40	SSH316SE-40	4"	3.81	96.8	5.68	144.3



# CLASS 150 HEAVY 304 / 316 STAINLESS FITTINGS - MSS SP114

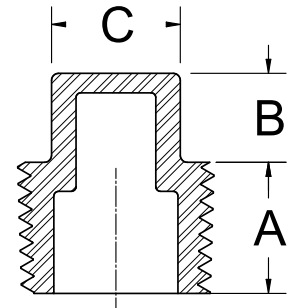
## Locknut - NPSL



304SS	316SS	Size	A		C	
			Inches	mm	Inches	mm
N/A	SSH316LN-01	1/8"	0.19	4.8	0.69	17.5
N/A	SSH316LN-02	1/4"	0.25	6.4	0.84	21.4
SSH304LN-03	SSH316LN-03	3/8"	0.28	7.1	1.00	25.4
SSH304LN-05	SSH316LN-05	1/2"	0.31	7.9	1.18	30.0
SSH304LN-07	SSH316LN-07	3/4"	0.34	8.7	1.44	36.5
SSH304LN-10	SSH316LN-10	1"	0.38	9.5	1.75	44.5
SSH304LN-12	SSH316LN-12	1-1/4"	0.44	11.1	2.09	53.2
SSH304LN-15	SSH316LN-15	1-1/2"	0.47	11.9	2.34	59.5
SSH304LN-20	SSH316LN-20	2"	0.53	13.5	2.88	73.0

## Plug - MPT

Cored



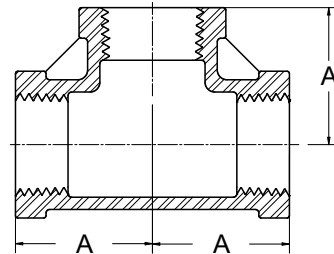
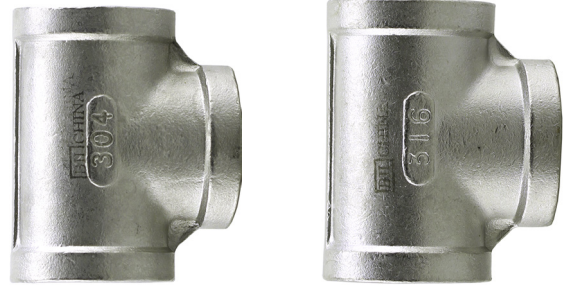
304SS	316SS	Size	A		B		C	
			Inches	mm	Inches	mm	Inches	mm
SSH304P-01	SSH316P-01	1/8"	0.37	9.4	0.24	6.1	0.28	7.1
SSH304P-02	SSH316P-02	1/4"	0.44	11.2	0.28	7.1	0.38	9.5
SSH304P-03	SSH316P-03	3/8"	0.48	12.2	0.31	7.9	0.44	11.1
SSH304P-05	SSH316P-05	1/2"	0.56	14.2	0.38	9.7	0.56	14.3
SSH304P-07	SSH316P-07	3/4"	0.63	16.0	0.44	11.2	0.63	15.9
SSH304P-10	SSH316P-10	1"	0.75	19.1	0.50	12.7	0.81	20.6
SSH304P-12	SSH316P-12	1-1/4"	0.8	20.3	0.56	14.2	0.94	23.8
SSH304P-15	SSH316P-15	1-1/2"	0.83	21.1	0.62	15.7	1.13	28.6
SSH304P-20	SSH316P-20	2"	0.88	22.4	0.68	17.3	1.31	33.3
SSH304P-25	SSH316P-25	2-1/2"	1.07	27.2	0.74	18.8	1.50	38.1
SSH304P-30	SSH316P-30	3"	1.13	28.7	0.80	20.3	1.69	42.9
SSH304P-40	SSH316P-40	4"	1.22	31.0	0.96	24.4	2.20	63.5



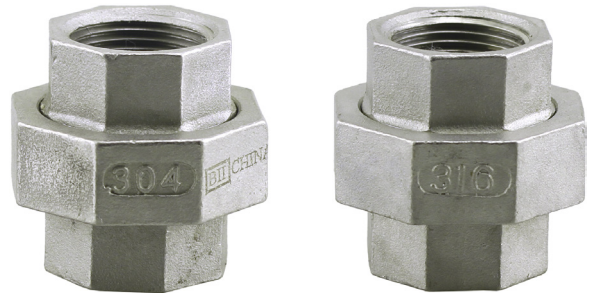
# CLASS 150 HEAVY 304 / 316 STAINLESS FITTINGS - MSS SP114

## Tee - FPT

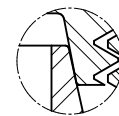
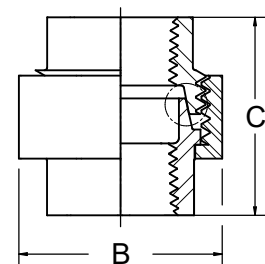
304SS	316SS	Size	A	
			Inches	mm
SSH304T-01	SSH316T-01	1/8"	0.81	20.6
SSH304T-02	SSH316T-02	1/4"	0.81	20.6
SSH304T-03	SSH316T-03	3/8"	0.93	23.6
SSH304T-05	SSH316T-05	1/2"	1.12	28.4
SSH304T-07	SSH316T-07	3/4"	1.31	33.3
SSH304T-10	SSH316T-10	1"	1.50	38.1
SSH304T-12	SSH316T-12	1-1/4"	1.75	44.5
SSH304T-15	SSH316T-15	1-1/2"	1.93	49.0
SSH304T-20	SSH316T-20	2"	2.25	57.2
SSH304T-25	SSH316T-25	2-1/2"	2.68	68.1
SSH304T-30	SSH316T-30	3"	3.06	77.7
SSH304T-40	SSH316T-40	4"	3.81	96.8



## Union - FPT



304SS	316SS	Size	B		C	
			Inches	mm	Inches	mm
SSH304U-01	SSH316U-01	1/8"	0.93	23.6	1.26	32.0
SSH304U-02	SSH316U-02	1/4"	1.10	27.9	1.44	36.6
SSH304U-03	SSH316U-03	3/8"	1.26	32.0	1.50	38.1
SSH304U-05	SSH316U-05	1/2"	1.45	36.8	1.72	43.7
SSH304U-07	SSH316U-07	3/4"	1.71	43.4	1.94	49.3
SSH304U-10	SSH316U-10	1"	2.07	52.6	2.00	50.8
SSH304U-12	SSH316U-12	1-1/4"	2.50	63.5	2.26	57.4
SSH304U-15	SSH316U-15	1-1/2"	2.82	71.6	2.41	61.2
SSH304U-20	SSH316U-20	2"	3.41	86.6	2.75	69.9
SSH304U-25	SSH316U-25	2-1/2"	4.12	104.6	3.22	81.8
SSH304U-30	SSH316U-30	3"	4.75	120.7	3.50	88.9
SSH304U-40	SSH316U-40	4"	6.00	152.4	3.85	97.8



DETAIL  
Metal to metal sealing

**BOSHART**  
**INDUSTRIES**

25 Whaley Avenue, PO Box 310, Milverton, ON CANADA N0K 1M0  
Tel: 800-561-3164

[boshart.com](http://boshart.com) ♦ [blog.boshart.com](http://blog.boshart.com)