

M SERIES REFRIGERANT COIL MODULE

REFRIGERANT COILS for R-22, R-407C, R-410A

Model Number Key

M 2430 C L 1 - A -
 ① ② ③ ④ ⑤ ⑥ ⑦

- | | |
|--|---|
| <p>① Unit Type
M=Modular</p> <p>② Nominal Capacity
2430=24000 to 30000 Btu/hr
(7.0 to 8.8 kW)
3036=30000 to 36000 Btu/hr
(8.8 to 10.5 kW)
3642=36000 to 42000 Btu/hr
(10.5 to 12.3 kW)
4860=48000 to 60000 Btu/hr
(14.0 to 17.5 kW)</p> <p>③ Module Type
C=Coil</p> | <p>④ Configuration
L=Left-hand connection</p> <p>⑤ Revision
1, 2, 3, etc.</p> <p>⑥ Coil Style, TXV Option
A=C style coil without TXV
B=C style coil with R410A TXV
D=H style coil without TXV
E=H style coil with R410A TXV</p> <p>⑦ Paint Color
(blank)=None
1=White</p> |
|--|---|

* A cross-reference chart listing current and past model numbers is available at the end of this bulletin.

Packing List

Package includes:

- (1) – Coil Module
- (1) – Defrost relay
- (1) – Thermostatic expansion valve (–B and –E models only)
- (1) – Liquid Line, 3/8-inch (9.5mm) OD
- (1) – Spacer Module (M4860CL1 only)

General Information

Unico System designed and built evaporator coil modules can be easily installed with the matching *Unico System* blower modules. See coil/blower match-up table below. The evaporator can be matched to most types of remote condensing units and heat pumps. All coils are designed for both heat pump and cooling-only applications. Check the AHRI directory for compatibility, capacity, and efficiency ratings (www.ahrinet.org).



Figure 1. Refrigerant Coil Module with cut-away (H-style shown).

Matching Blower/Heating Modules

Evaporator Coil Prefix	Matching Blower Module Prefix	Matching Hot Water Coil Module Prefix
M2430CL1	M2430BL1	M2430CL1
M3036CL1	M3036BL1	M3036CL1
M3642CL1	M3642BL1	M3642CL1
M4860CL1	M4860BL1	M4860CL1

Features

- Slant coil for M2430, M3036, M3642 for vertical or horizontal airflow applications. A-coil for M4860.
- Internally mounted TXV easily accessible
- Compatible with R-22/407C/410A refrigerants
- Standard *Unico System* ‘latch’ system
- High efficiency heat transfer surface
- Temperature limit switch to prevent freezing

Certified to UL Standard 1995
 Conforms to CAN/CSA Standard C22.2 NO. 236

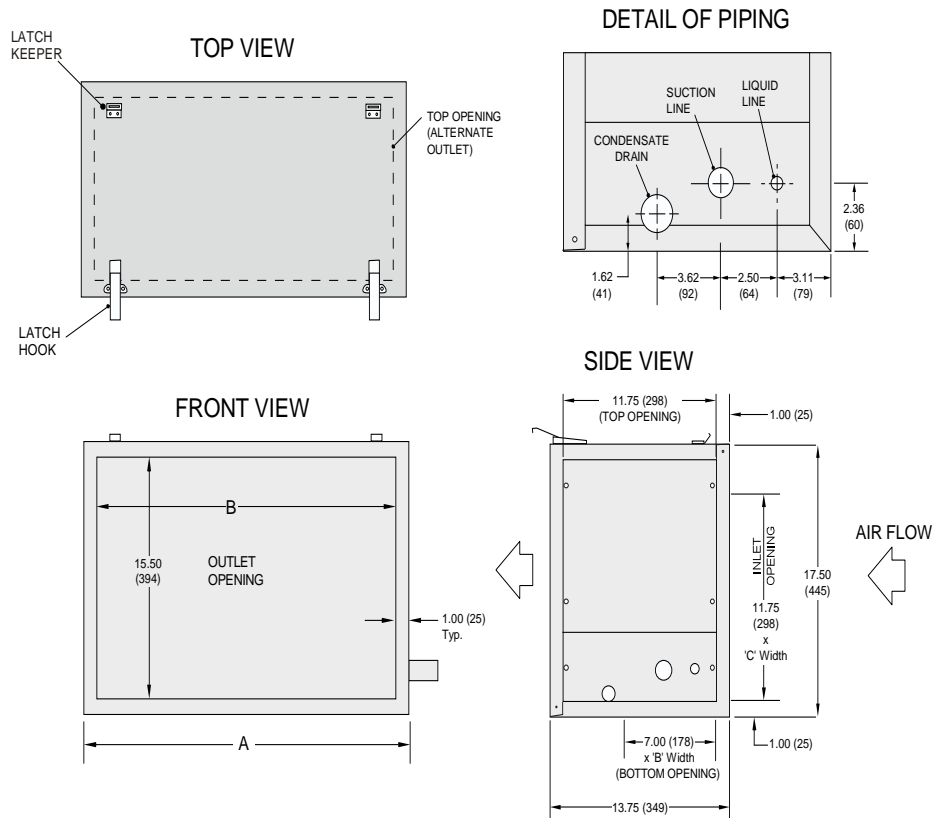


Unico products comply with the European regulations that guarantee product safety.

Refrigerant Coil Module Specifications for: M2430, M3036 and M3642

System Type		C Style Coil			H Style Coil			
Model No.		M2430CL1-A M2430CL1-B	M3036CL1-A M3036CL1-B	M3642CL1-A M3642CL1-B	M2430CL1-D M2430CL1-E	M3036CL1-D M3036CL1-E	M3642CL1-D M3642CL1-E	
Evaporator Coil Properties	Compatible Condenser Size [Ton, (kW)]	2.0-2.5 (7.0-8.8)	2.5-3.0 (8.8-10.5)	3.0-3.5 (10.5-12.3)	2.0-2.5 (7.0-8.8)	2.5-3.0 (8.8-10.5)	3.0-3.5 (10.5-12.3)	
	Net Face Area [ft ² (m ²)]	2.13 (0.20)	2.34 (0.22)	3.48 (0.32)	2.13 (0.20)	2.65 (0.25)	3.48 (0.32)	
	Tube diameter [in., (mm)]	3/8 (9.5)	3/8 (9.5)	3/8 (9.5)	3/8 (9.5)	3/8 (9.5)	3/8 (9.5)	
	Fin Density [fins/in., (fins/m)]	14 (551)	14 (551)	14 (551)	15.5 (610)	15.5 (610)	15.5 (610)	
	Number of rows	4	4	4	6	6	6	
	Design Pressure [psig, (kPa)]	500 (3447)	500 (3447)	500 (3447)	500 (3447)	500 (3447)	500 (3447)	
	TX Valve Part No.	R-22/R-407C	A00808-002	A00808-004	A00808-004	A00808-002	A00808-004	A00808-004
		R-410A	A00808-013	A00808-014	A00808-014	A00808-013	A00808-014	A00808-014
	Suction line O.D. [in., (mm)]	7/8 (22.2)	7/8 (22.2)	7/8 (22.2)	7/8 (22.2)	7/8 (22.2)	7/8 (22.2)	
	Liquid line OD [in. (mm)]	3/8 (9.5)	3/8 (9.5)	3/8 (9.5)	3/8 (9.5)	3/8 (9.5)	3/8 (9.5)	
	Liquid Line Part Number	A01023-001	A01023-001	A01023-001	A01024-001	A01024-001	A01024-001	
	Condensate Connection, FPT [in., (mm)]	3/4 (19)	3/4 (19)	3/4 (19)	3/4 (19)	3/4 (19)	3/4 (19)	
	Refrigerant Type	R-22, R-407C, R-410A						
Coil Shipping Weight [lbs., (kg)]	60 (28)	70 (32)	78 (36)	61 (28)	71 (33)	79 (36)		
Expansion Device*	TXV with internal Check Valve							
Cabinet Dimensions	A	25.0 (635)	30.0 (762)	38.0 (965)	25.0 (635)	30.0 (762)	38.0 (965)	
	B	23.0 (584)	28.0 (711)	36.0 (915)	23.0 (584)	28.0 (711)	36.0 (915)	
	C	20.0 (508)	25.0 (635)	33.0 (838)	20.0 (508)	25.0 (635)	33.0 (838)	

* TXV shipped loose. Sold separately for -A, -D models.



UNIT SHOWN FOR HORIZONTAL AIRFLOW ARRANGEMENT. USE ALTERNATE OPENINGS FOR VERTICAL ARRANGEMENT.
ALL DIMENSIONS IN INCHES (mm)

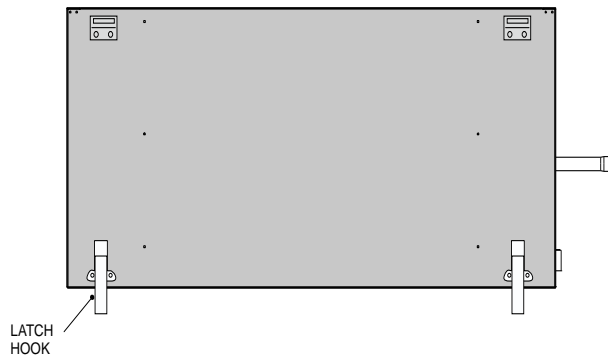
IL000179-REV

Refrigerant Coil Module Specifications for: M4860

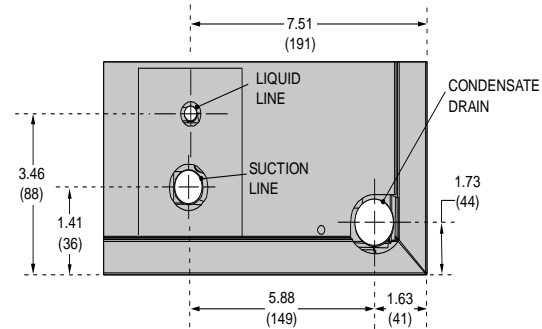
System Type		C Style Coil	H Style Coil	
Model No.		M4860CL1-A M4860CL1-B	M4860CL1-D M4860CL1-E	
Evaporator Coil Properties	Compatible Condenser Size [Ton, (kW)]	4.0-5.0 (14.0-17.6)	4.0-5.0 (14.0-17.6)	
	Net Face Area [ft ² (m ²)]	7.44 (0.69)	7.44 (0.69)	
	Tube diameter [in., (mm)]	3/8 (9.5)	3/8 (9.5)	
	Fin Density [fins/in., (fins/m)]	14 (551)	14 (551)	
	Number of rows	3	4	
	Design Pressure [psig, (kPa)]	500 (3447)	500 (3447)	
	TX Valve Part No.	R-22/R-407C R-410A	A00808-005 A00808-015	A00808-005 A00808-015
	Suction line O.D. [in., (mm)]	7/8 (22.2)	7/8 (22.2)	
	Liquid line OD [in., (mm)]	3/8 (9.5)	3/8 (9.5)	
	Liquid Line Part Number	A01044-001	A01045-001	
	Condensate Connection, FPT [in., (mm)]	3/4 (19)	3/4 (19)	
	Refrigerant Type	R-22, R-407C, R-410A	R-22, R-407C, R-410A	
	Coil Shipping Weight [lbs., (kg)]	88 (40)	89 (41)	
	Expansion Device*	TXV with internal Check Valve	TXV with internal Check Valve	

* TXV shipped loose.

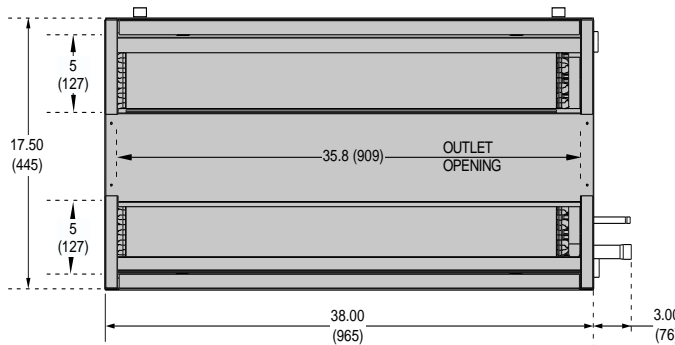
TOP VIEW



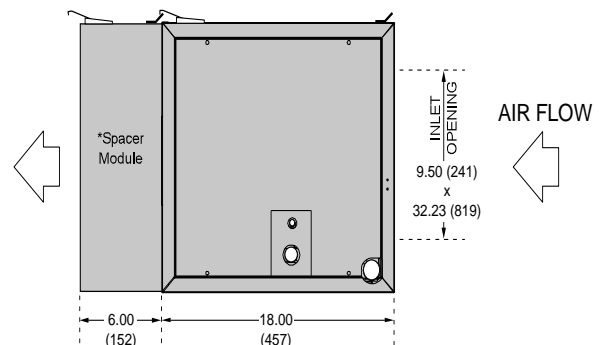
DETAIL OF PIPING



FRONT VIEW



SIDE VIEW



UNIT SHOWN FOR HORIZONTAL AIRFLOW ARRANGEMENT.
ALL DIMENSIONS IN INCHES (mm)

*Spacer Module is shipped with MC4860C/H Cooling Module only.

IL002836b.cmy