



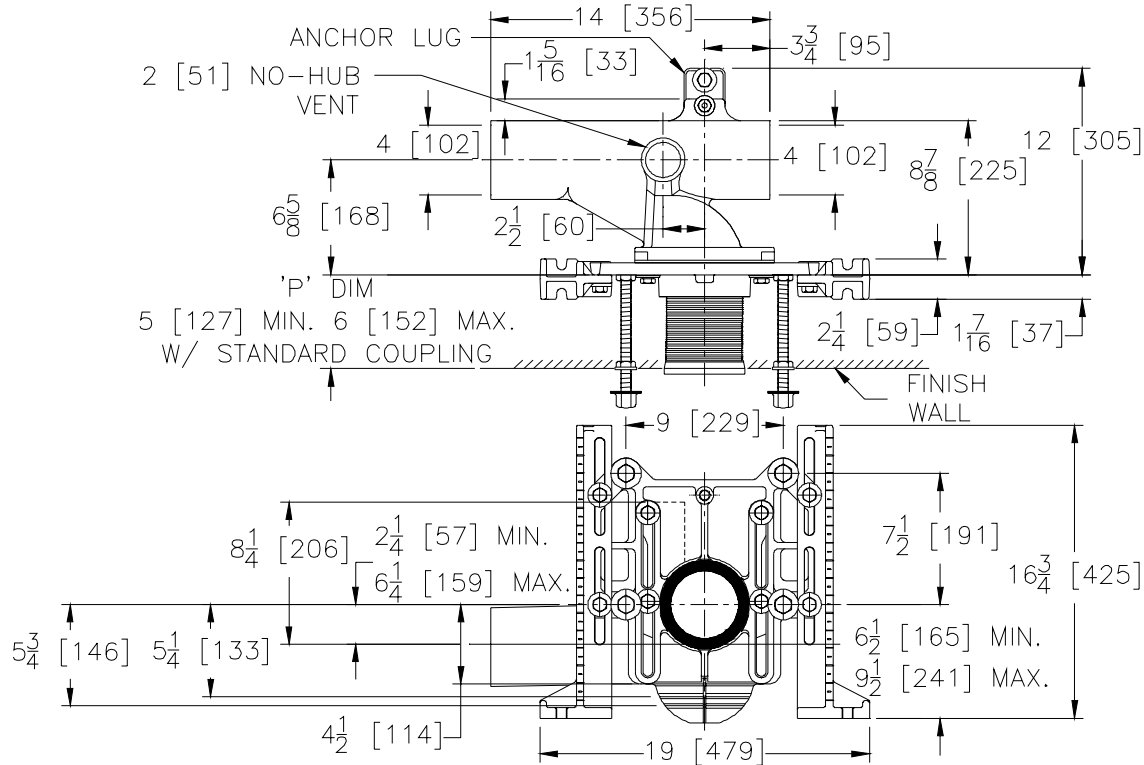
Z1207-N

ADJUSTABLE HORIZONTAL HIGH ROUGH-IN SIPHON JET - NO-HUB

SPECIFICATION SHEET

TAG _____

Dimensional Data (inches and [mm]) are Subject to Manufacturing Tolerances and Change Without Notice



Product Numbers	Approx Wt. Lbs [kg]
Z1207-NL4	87 [39]
Z1207-NR4	87 [39]
Z1207-ND4	115 [51]

ENGINEERING SPECIFICATION: ZURN Z1207-N()

Adjustable, horizontal, high rough-in siphon jet water closet "Rigid System" with 4 [102] No-Hub connections. Complete with Dura-Coated cast iron right hand, left hand, or double main fitting, with 2 [51] vent, adjustable gasketed face plate, universal floor mounted foot supports, corrosion resistant adjustable ABS coupling with integral test cap, fixture bolts, trim, and stud protectors. Rear anchor tie down and bonded "Neo-Seal" gasket.

Note: 13 1/2 [343] Minimum space required between front of foot and rear of anchor to install Z1207-N4 Series.

OPTIONS (Check/specify appropriate options)

- Z1207-NR4** 4 [102] No-Hub Right Hand Inlet with Flow to Left
- Z1207-NL4** 4 [102] No-Hub Left Hand Inlet with Flow to Right
- Z1207-ND4** 4 [102] No-Hub Back to Back Inlet (Double)

PREFIXES

- _____ Z D.C.C.I. System with Zurn "ZZ" Adjustable Coupling*
- _____ ZQ D.C.C.I. System with NPT Face Plate, Non-Adjustable Coupling

SUFFIXES

- | | |
|---|--|
| <ul style="list-style-type: none"> _____ -A Auxiliary Support Assembly (For P-Dim. Greater than 18 [457]) _____ -B Blowout Type Fixture Support _____ -BC Back Cleanout _____ -CC Corrosion Resistant Cast Iron Coupling (6 - 12 [152 - 305]) _____ -CL Coupling Length Greater than 12 [305] (Specify Length Required) _____ -F Floor Mounted Back Outlet Fixture Support _____ -G Galvanized Cast Iron _____ -M Auxiliary Foot Support (For P-Dim. 10 - 18 [254 - 457]) _____ -VP Vandal-Proof Trim _____ -X Heavy-Duty 500-Lb. [227 kg.] Carrier | <ul style="list-style-type: none"> _____ -X1 2 [51] Integral Extension Foot _____ -X3 3 [76] Foot Extension Assembly _____ -X4 4 [102] Foot Extension Assembly _____ -29 Mechanical Test Cap Assembly (Previously Z1210-29) _____ -45 Finishing Frame for Siphon Jet System (For Blowout System Specify -45-B) (Previously Z1210-45) _____ -50 Flush Valve Supply Support for W.C. (Previously Z1210-50) _____ -61 "ZZ" Coupling Wrench |
|---|--|

*REGULARLY FURNISHED UNLESS OTHERWISE SPECIFIED

REV. I DATE: 06/21/07 C.N. NO. 96748

DWG. NO. 59270 PRODUCT NO. Z1207-N

ZURN INDUSTRIES, LLC. ♦ SPECIFICATION DRAINAGE OPERATION ♦ 1801 Pittsburgh Ave. ♦ Erie, PA 16514

Phone: 814/455-0921 ♦ Fax: 814/454-7929 ♦ World Wide Web: www.zurn.com

In Canada: ZURN INDUSTRIES LIMITED ♦ 3544 Nashua Drive ♦ Mississauga, Ontario L4V1L2 ♦ Phone: 905/405-8272 Fax: 905/405-1292