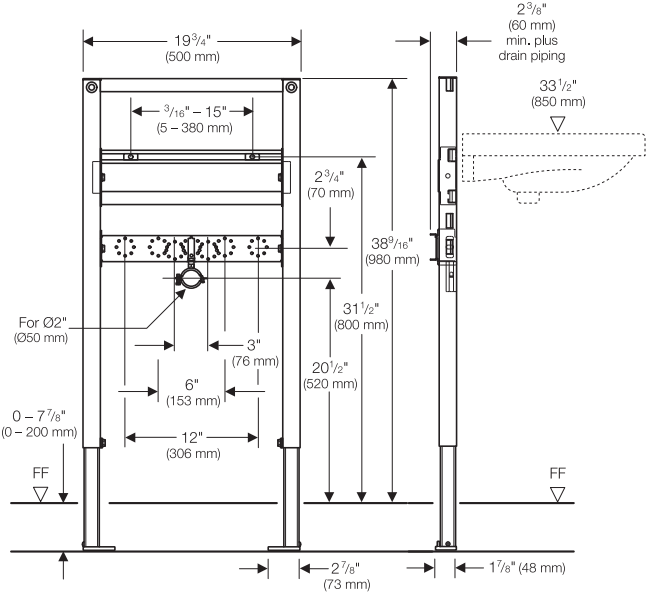


# Geberit Installation System for Wall-Hung Lavatories

Model No.	Description
111.490.00.1	Geberit Duofix Carrier for wall-hung lavatories.



**Product Specifications**

In-Wall Duofix carrier system for 2-hole wall-hung sinks. System shall fit within minimum 3" (76 mm) framing wall or plumbing chase, with wood construction or steel framing members placed 19 3/4" (500 mm) apart. Framing members should be capable of supporting a 330 pound (150 kg) load without damage to the wall. The carrier frame shall be adjustable for fixture heights from 31 1/2" (800 mm) to 39 1/2" (1000 mm) and for mounting anchors from 2" (50mm) to 15" (380 mm). All components shall be compliant with applicable codes and product standards.

**Warranty**

Limited lifetime warranty on carrier.

**Features**

- 16-gauge, powder-coated, structural-steel tubing rated to 330 lbs (150 kg) without damage to finished wall or carrier unit
- Fixture rim height adjustments from 31 1/2" (800 mm) to 39 1/2" (1000 mm)
- Frame height: 38 3/16" (979 mm)
- Installation hardware included



ARCHITECT/ENGINEER APPROVAL	
Job Name	_____
Date	Quantity
Model Specified	_____
Variations Specified	_____
Customer/Wholesaler	_____
Contractor	_____
Architect	_____