

**For Residential and Commercial Applications**

Job Name		Engineer / Architect	
Job Location		Wholesaler	
Submittal Date		Contractor	

## SJ300 Series Faucet Shank Nut

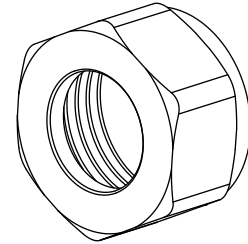
**Use:** To connect faucet water supply risers to faucet shank.

**Design Features:**

- Brass material

**Operating Specifications:**

**Temperature:** 32° - 124° F

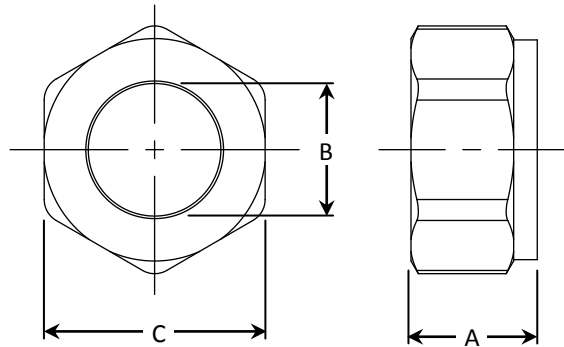


<b>MATERIAL SPECIFICATIONS</b>	
<b>Faucet Nut</b>	Brass or brass, chrome plated

**Part Listing:**

- SJ300 C                      Faucet shank nut, chrome
- SJ300 CB                     Faucet shank nut, chrome
- SJ300 R                      Faucet shank nut, rough brass
- SJ300 RB                     Faucet shank nut, rough brass, bulk

<b>PART DIMENSIONS (Inches)</b>				
<b>Model</b>	<b>Straight Thread</b>	<b>DIM. A</b>	<b>DIA. B</b>	<b>HEX. C</b>
SJ300	1/2-14 NPSM	.50	.520	7/8



*This specification and all information contained herein is the confidential and exclusive property of BrassCraft Manufacturing, and shall not be disclosed to others without the written consent of BrassCraft Mfg. This specification must be returned to BrassCraft Mfg. if requested.*

**BrassCraft®**