

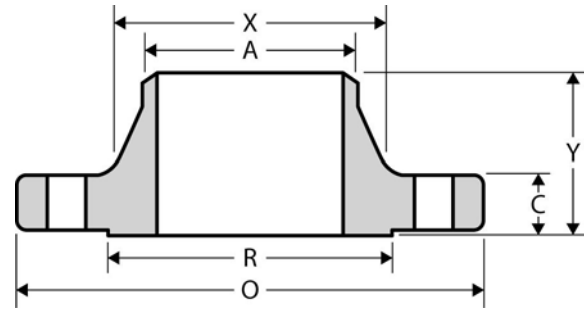


The Best Products, The Best Service...

# SERVICE METAL

ONE CALL GETS IT ALL

## Weld Neck Flange CLASS 300 Inches / Pounds



Nominal Pipe Size	Outside Diam. of Flange (O)	Thick. of Flange (C)	Diam. of Raised Face (R)	Diam. of Hub at Base (X)	Diam. of Hub at Point of Welding (A)	Length thru Hub (Y)	No. of Holes	Diam. of Holes	Diam. of Bolts	Diam. of Bolt Circle	Approx. Weight (in Pounds)
1/2	3.75	0.56	1.38	1.50	0.84	2.06	4	0.62	0.50	2.62	2
3/4	4.62	0.62	1.69	1.88	1.05	2.25	4	0.75	0.62	3.25	3
1	4.88	0.69	2.00	2.12	1.32	2.44	4	0.75	0.62	3.50	4
1 1/4	5.25	0.75	2.50	2.50	1.66	2.56	4	0.75	0.62	3.88	5
1 1/2	6.12	0.81	2.88	2.75	1.90	2.69	4	0.88	0.75	4.50	7
2	6.50	0.88	3.62	3.31	2.38	2.75	8	0.75	0.62	5.00	9
2 1/2	7.50	1.00	4.12	3.94	2.88	3.00	8	0.88	0.75	5.88	12
3	8.25	1.12	5.00	4.62	3.50	3.12	8	0.88	0.75	6.62	15
3 1/2	9.00	1.19	5.50	5.25	4.00	3.19	8	0.88	0.75	7.25	18
4	10.00	1.25	6.19	5.75	4.50	3.38	8	0.88	0.75	7.88	25
5	11.00	1.38	7.31	7.00	5.56	3.88	8	0.88	0.75	9.25	32
6	12.50	1.44	8.50	8.12	6.63	3.88	12	0.88	0.75	10.62	42
8	15.00	1.62	10.62	10.25	8.63	4.38	12	1.00	0.88	13.00	67
10	17.50	1.88	12.75	12.62	10.75	4.62	16	1.12	1.00	15.25	91
12	20.50	2.00	15.00	14.75	12.75	5.12	16	1.25	1.12	17.75	140
14	23.00	2.12	16.25	16.75	14.00	5.62	20	1.25	1.12	20.25	180
16	25.50	2.25	18.50	19.00	16.00	5.75	20	1.38	1.25	22.50	250
18	28.00	2.38	21.00	21.00	18.00	6.25	24	1.38	1.25	24.75	320
20	30.50	2.50	23.00	23.12	20.00	6.38	24	1.38	1.25	27.00	400
24	36.00	2.75	27.25	27.62	24.00	6.62	24	1.62	1.50	32.00	580

\* Dimensions conform to ASTM A/SA-105; ANSI B16.5

\* Bore to be determined at time of order.