




Location:



5502-TRM, 5502TRMTC
Tub/Shower Trim
Specification Submittal



<p>Feature Highlights</p> <ul style="list-style-type: none"> • Elm Tub/Shower Trim • Requires Temptrol® Pressure Balancing Tub/Shower Valve • Metal lever handle • 5-7/8" diverter tub spout • 5 mode showerhead • 2.0 gpm (7.6 L/min) flow restrictor • Components shall be metal and nonmetallic construction, plated in standard Polished Chrome finish • Available with TA-10 flow control spindle and T-12A cap assembly for Temptrol valve bodies installed with Test Cap (order p/n 5502TRMTC) 	<p>Options/Modifications</p> <ul style="list-style-type: none"> <input type="checkbox"/> -1.5  1.5 gpm (5.7 L/min) flow restrictor <input type="checkbox"/> -L1 Less showerhead <input type="checkbox"/> -L4 Less showerhead, arm and flange <input type="checkbox"/> -L7 Less handle <input type="checkbox"/> -STN Satin Nickel finish <input type="checkbox"/> -SBZ Seasoned Bronze <p>Note: Append appropriate -suffix to model number.</p>
<p>Model Numbers</p> <ul style="list-style-type: none"> <input type="checkbox"/> 5502-TRM Tub/Shower Trim, Temptrol Pressure Balancing Tub/Shower Valve ordered separately <input type="checkbox"/> 5502TRMTC Tub/Shower Trim with TA-10 flow control spindle and T-12A cap assembly, must order Temptrol valve with Test Cap 	<p>Warranty</p> <p>Limited Lifetime - to the original end purchaser in consumer/residential installations.</p> <p>10 Years - for commercial/industrial installations. Refer to www.symmons.com/warranty for complete warranty information.</p> 
<p>Compliance</p> <ul style="list-style-type: none"> • ASME A112.18.1/CSA B125.1 	

Architectural/ Engineering Specification

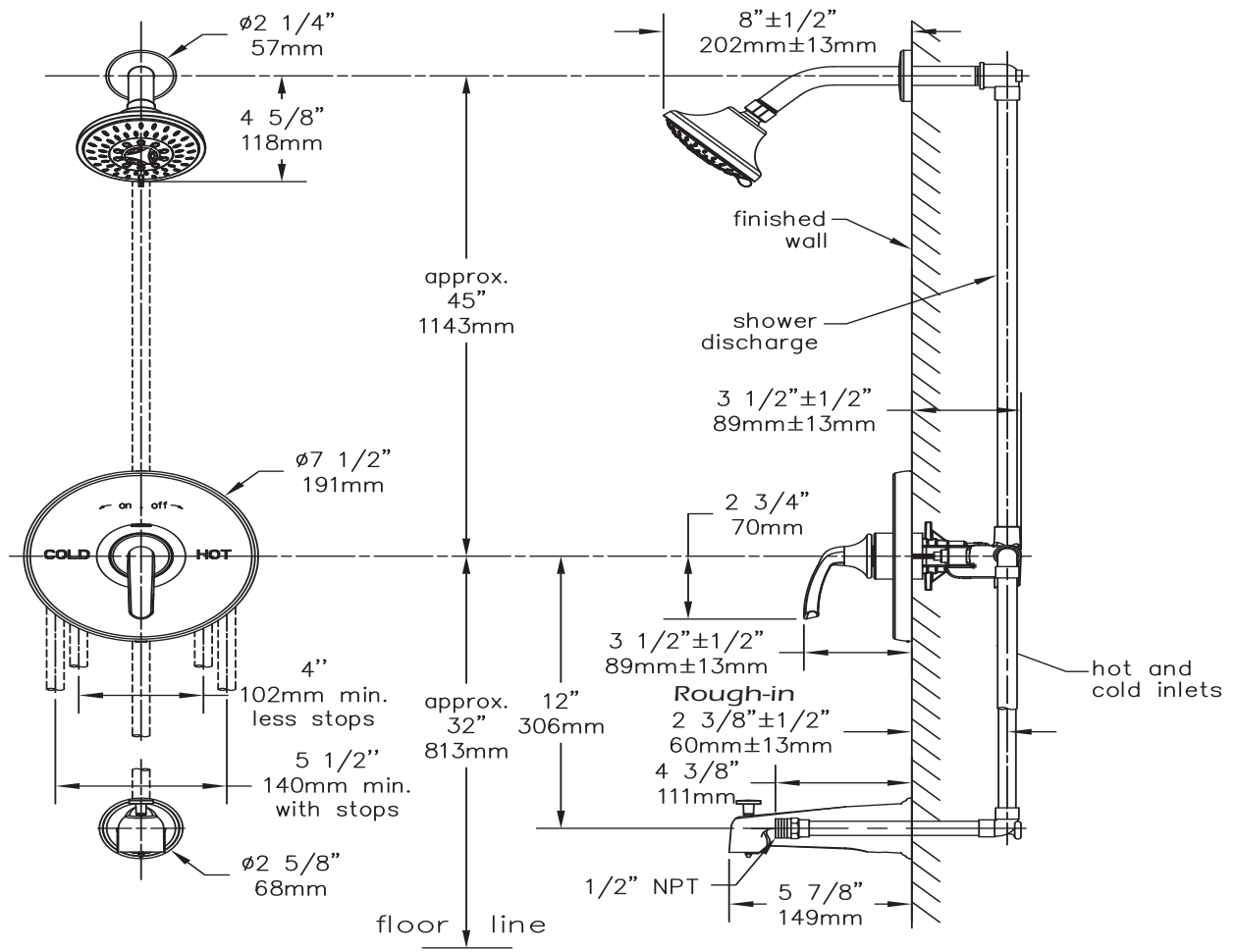
Symmons _____ With Elm Tub/Shower Trim, requires Temptrol® pressure balancing shower valve, metal lever handle, 5-7/8" diverter tub spout, 5 mode showerhead, 2.0 gpm (7.6 L/min) flow restrictor, components shall be metal and nonmetallic construction, plated in standard Polished Chrome finish, available with TA-10 flow control spindle and T-12A cap assembly for Temptrol valve bodies installed with Test Cap (order p/n 5502TRMTC). 10 Year commercial Warranty. ASME A112.18.1/CSA B125.1, Complaint. Available options include "1.5 - 1.5 gpm (5.7 L/min) flow restrictor", "L1 - Less showerhead", "L4 - Less showerhead, arm and flange", "L7 - Less Handle", "STN - Satin nickel finish", "SBZ - Seasoned Bronze".



SYMMONS® Elm

5502-TRM, 5502TRMTC

Dimensions



Notes:

- 1) Valve body and piping not included and shown as reference only.
- 2) Plaster shield (p/n T-176) for dry wall, plaster or other type walls 1/2" or greater.
- 3) All dimensions measured from nominal rough-in.
- 4) Dimensions subject to change without notice.