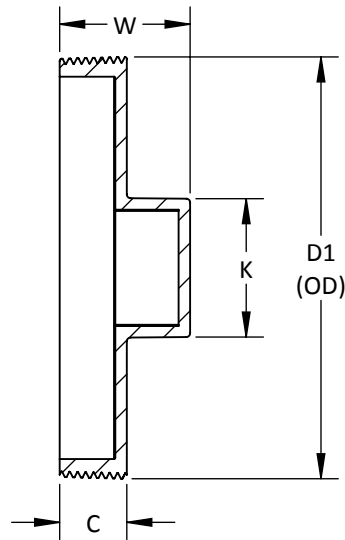


MOLDED



ASTM D2665, F1866, CSA B182.2 WHERE APPLICABLE

**THREADED PLUG - RAISED
PVC DWV**

| PART NO. | SIZE IN INCHES | D1 | K | W | C |
|----------|----------------|----------|---------|---------|---------|
| * D1154 | 4 | 4 15/32 | 1 15/16 | 1 11/16 | 7/8 |
| * D1156 | 6 | 6 19/32 | 2 3/16 | 2 1/32 | 1 1/16 |
| * D1158 | 8 | 8 19/32 | 2 | 2 3/16 | 1 1/8 |
| * D11510 | 10 | 10 11/16 | 3 | 2 5/16 | 1 11/32 |
| * D11512 | 12 | 12 11/16 | 3 | 2 15/32 | 1 17/32 |

-- DIMENSIONS AND APPEARANCE ARE APPROXIMATE AND SUBJECT TO CHANGE
WITHOUT NOTICE DUE TO DESIGN OR PRODUCTION MODIFICATIONS
-- MOLDED FITTING TOLERANCE = ±1/8" OVERALL LENGTH
-- FABRICATED FITTING TOLERANCE = ±1" LINEAR, ± 2° ANGULAR

* MOLDED FITTING
† ASSEMBLED FROM MOLDED COMPONENTS
ALL OTHER FITTINGS ARE FABRICATED