

# Condenser Fan Motors - Single Phase - PSC

5 1/2 inch dia. MARS SERIES 100

MARS



## Outdoor Condenser Fan Motors

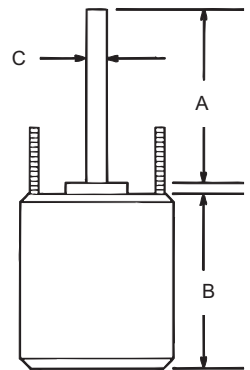
MARS up/down outdoor condenser fan motors are designed for either vertical shaft-up or shaft-down applications. Shell and end shields are enclosed for weather protection. A weep hole is provided in each end shield to allow condensate to drain. All of these motors are suitable for air conditioning or heat pump applications.

### Features:

- All angle, sleeve or ball bearing
- Rheem mounting holes w/screws installed
- Reversible rotation
- Water slinger on shaft
- Thru bolt or band mounting
- Capacitor requirement noted on motor label
- Up/down design
- Double full flatted shaft

### Specifications:

- Class "B" insulation
- Single phase, 60 Hertz
- Thermal overload protected
- Fan duty, continuous, air over
- 26 & 36 inch leads



### Cross Reference

MARS No.	GE/ Genteq	Century/ AO Smith	US Motors/ Emerson	Fasco	Marathon	Wagner	Packard	YORK Source 1	Rheem/Ruud Protech	Carrier/Totaline RCD	Nordyne Partner's Choice	ROTOM
10727	3727	FSE1016S	1859	D917	X411	WG840727	43727	S1-FHM3727	W51-16CJA1-01	P257-8727	01-0160	
10728	3728	FSE1026S	1860	D909	X412	WG840728	43728	S1-FHM3728	W51-14CJA1-01	P257-8728	01-0161	
10729	3729	FSE1036S	1861	D908	X413	WG840729	43729	S1-FHM3729	W51-13CJA1-01	P257-8729	01-0162	
10730	3730	FSE1056S	1862	D907	X414	WG840730	43730	S1-FHM3730	W51-12CJA1-01	P257-8730	01-0163	
10731	3731	FSE1076S	1868	D933		WG840731	43731	S1-FHM3731	51-42534-19	P257-8731	01-0164	
10403	3403	FSE1018SF	1873	D798	X465		60825		51-23055-12		0165	
10404	3404	FSE1028SF	1874	D934		WG840204	40825	S1-FHM3204	51-23054-13		0166	R22445
10405	3405	FSE1038SF	1875	D796	X451	WG840205	30825	S1-FHM3205		P257-8026	0167	R22345
10746	3746	FSE1058SF	1870	D713	X452						0168	R22245

### Reversible Rotation - Single Speed

MARS NO.	HP	VOLTS	AMPS	CAP REQUIRED	ENCL.	BRG.	DIMENSIONS			LEAD LENGTHS
							A	B	C	

#### 1075 RPM

10727	1/6	208-230	0.90	5/370	TEAO	Sleeve	6.50	4.23	1/2	26"
10728	1/4	208-230	1.8	5/370	TEAO	Sleeve	6.50	4.23	1/2	26"
10729	1/3	208-230	2.4	7.5/370	TEAO	Sleeve	6.50	5.23	1/2	26"
10730	1/2	208-230	3.5	10/370	TEAO	Sleeve	6.50	5.73	1/2	26"
10731	3/4	208-230	5.2	10/370	TEAO	Ball	6.50	6.23	1/2	30.5"

#### 825 RPM

10403	1/6	208-230	1.0	5/370	TEAO	Sleeve	6.50	4.23	1/2	36"
10404	1/4	208-230	2.2	5/370	TEAO	Sleeve	6.50	4.48	1/2	36"
10405	1/3	208-230	1.9	7.5/370	TEAO	Sleeve	6.50	5.23	1/2	36"
10746	1/2	208-230	2.8	12.5/370	TEAO	Sleeve	6.50	5.70	1/2	36"



The largest selection of motors, components and accessories for the HVAC/R Industry