

# EP flow-through multi-port vertical tees

## Project Information

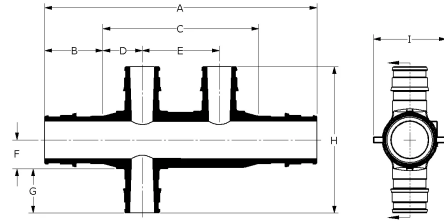
Job name:	Location:
Engineer:	Date submitted:
Contractor:	Submitted by:
Manufacturer's representative:	Approved by:

## Technical data

Material	Engineered Polymer
End type 1	ProPEX 3/4"
End type 2	ProPEX 3/4"
End type 3	ProPEX 3/4"
End type 4	ProPEX 1/2"
Temp/pressure ratings	73 °F (23 °C) at 160 psi (11 bar) 180 °F (82 °C) at 100 psi (6.9 bar) 200 °F (93 °C) at 80 psi (5.5 bar)

## Product Information and application use

Engineered polymer (EP) flow-through vertical multi-port tees are designed for use in hot and cold domestic potable water distribution systems. The tee features 3/4" ProPEX® inlets and 1/2" ProPEX outlets.



Part name	Part no.	A [inch]	B [inch]	C [inch]	D [inch]	E [inch]	F [inch]	G [inch]	H [inch]	I [inch]	J [inch]
EP Flow-through Multi-port Vertical Tee, 3 (1/2") outlets, 3/4" x 3/4" x 3/4" ProPEX	Q2237757	6.17	0.955	4.625	0.625	1.25	0.467	0.719	2.845	1.18	0.955
EP Flow-through Multi-port Vertical Tee, 4 (1/2") outlets, 3/4" x 3/4" x 3/4" ProPEX	Q2247757	7.42	0.955	5.875	0.625	1.25	0.467	0.719	2.845	1.18	0.955

Part name	Part no.	Cv Through	Weight per UOM [lbs/UOM]	Equivalent length branch [ft]	Equivalent length through [ft]	Cv Branch
EP Flow-through Multi-port Vertical Tee, 3 (1/2") outlets, 3/4" x 3/4" x 3/4" ProPEX	Q2237757	13.6	0.12	7.82	2.25	-
EP Flow-through Multi-port Vertical Tee, 4 (1/2") outlets, 3/4" x 3/4" x 3/4" ProPEX	Q2247757	-	0.16	6.3	-	-

## Installation

Use any product designed to mount 1" copper pipe as a mounting bracket. For more information, refer to the Uponor Piping Systems Installation Guide

## Related applications

PEX-a Plumbing Systems

## Codes

UPC|IBC|IRC|IPC|NPC of Canada|UMC|NSPC|IMC

## Standards

ASTM E814|ULC S115|ASTM F877|ASTM F1960|CSA B137.5|ULC S102.2|ASTM E119|UL 263|NSF-61|ULC S101|NSF-14

## Listings

IAPMO-ESI|HUD MR 1269|ICC-ES-PMG|cNSFus-pw|UL|U.P.Code|QAIus P321

## Notes

- Cv branch tee to branch #2 = 3.1
- Cv through tee to tee = 13.6
- Cv through tee to side = 7.4
- Cv branch side to #2 = 3.6
- Cv through side to tee = 6.9

## Footnotes

## Contact information

Uponor Inc.  
5925 148th Street West  
Apple Valley, MN 55124  
T 800.321.4739  
F 952.891.2008

Uponor Ltd.  
6510 Kennedy Road  
Mississauga, ON L5T 2X4  
T 888.594.7726  
F 800.638.9517