


CI-HGS-E

High Efficiency Oil-Fired Cast Iron Boiler



- **87% AFUE** 
- **64 to 139 Net BTUs**
 - In 4 sizes
- **Chimney vented**
 - Optional direct vent kit is also available (sizes 127–163)
- **Integrated boiler control**
 - User-friendly
 - Energy-saving “thermal purge” feature circulates residual warm water in heating system prior to firing boiler
 - Combination high limit circulator relay
 - Extensively tested & proven
- **3-Pass cast iron heat exchanger**
- **Fully-opening cast iron swing door**
- **Return water mixing tube**
- **Metal section connectors**
 - Resistant to chemicals, offer increased boiler longevity
- **Designed for ease of service**
 - Swing-away cast iron door provides easy access to combustion chamber
- **Lifetime limited warranty**
 - See your installing contractor for more warranty information



New Yorker[®]
RESIDENTIAL HEATING BOILERS



Ratings, Specifications, & Dimensions

| Model Number | Burner Capacity | | | Net AHRI Ratings (MBH) | AFUE % | Minimum Chimney Requirements | | | Direct Vent System | |
|--------------------|-----------------|-----|----------------------------|------------------------|--------|------------------------------|-----------------|--------------|--------------------|-------------------------------|
| | GPH | MBH | DOE Heating Capacity (MBH) | | | Round In. Diam. | Rectangle (In.) | Height (Ft.) | Model | Vent Connector Diameter (In.) |
| CI-HGS-74E | 0.60 | 84 | 74 | 64 | 87 | 6 | 8 x 8 | 15 | N/A | N/A |
| CI-HGS-101E | 0.80 | 115 | 101 | 87 | 87 | 6 | 8 x 8 | 15 | N/A | N/A |
| CI-HGS-123E | 1.00 | 140 | 123 | 107 | 87 | 6 | 8 x 8 | 15 | FDVS-56 | 5 |
| CI-HGS-160E | 1.30 | 182 | 160 | 139 | 87 | 7 | 8 x 8 | 15 | FDVS-56 | 5 |

Standard Features

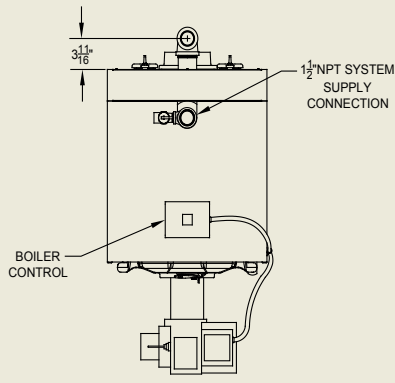
- Fully packaged
- Integrated boiler control system
- 3450 RPM flame retention Beckett oil burner
- Beckett GeniSYS primary control
- Return water mixing tube
- Electronic ignitor 14KV
- Clean cut fuel pump
- Tridicator
- Relief valve
- Drain valve



MADE IN

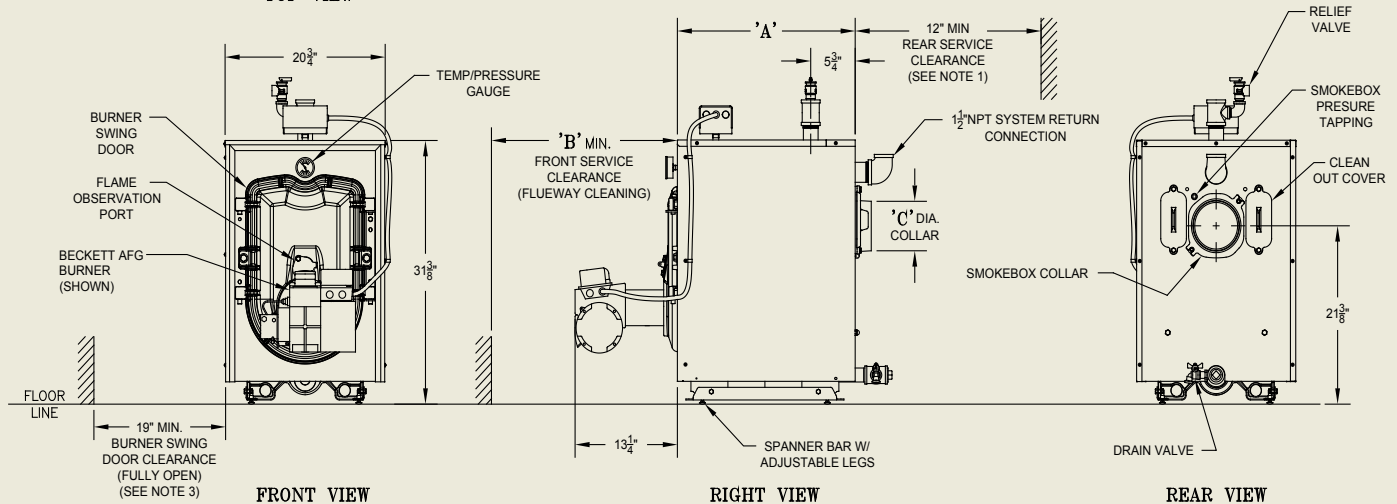


U.S.A.



TOP VIEW

| Model Number | Dim. (In.) | | | Water Content (Gal.) | Heat Trfr. Sur. Area (Sq. Ft.) | Actual Shipping Weight (Lbs.) |
|--------------------|------------|----|---|----------------------|--------------------------------|-------------------------------|
| | A | B | C | | | |
| CI-HGS-74E | 17 | 24 | 5 | 7.7 | 13.29 | 430 |
| CI-HGS-101E | 17 | 24 | 5 | 7.7 | 13.29 | 430 |
| CI-HGS-123E | 23 | 24 | 6 | 11.08 | 20.29 | 545 |
| CI-HGS-160E | 29 | 30 | 6 | 14.46 | 27.29 | 658 |



Notes:

- Return fittings and drain valve shipped loose.
- Piping shown hidden not furnished with boiler.
- Maximum working pressure, water: 30 PSI standard, 40 & 50 PSI optional



©2019 New Yorker Boiler Company, Inc, Lancaster, PA
 info@newyorkerboiler.com
 www.newyorkerboiler.com
 NYL03091 9/19 5Ms



New Yorker
 RESIDENTIAL HEATING BOILERS