

Location:



## Towel Bar 363DTB-18 and 363DTB-24

### Specification Submittal

#### Model Numbers

- 363DTB-18 Towel Bar
- 363DTB-24 Towel Bar

#### Finish Options

Append appropriate -suffix to model number.

- STN Satin nickel finish

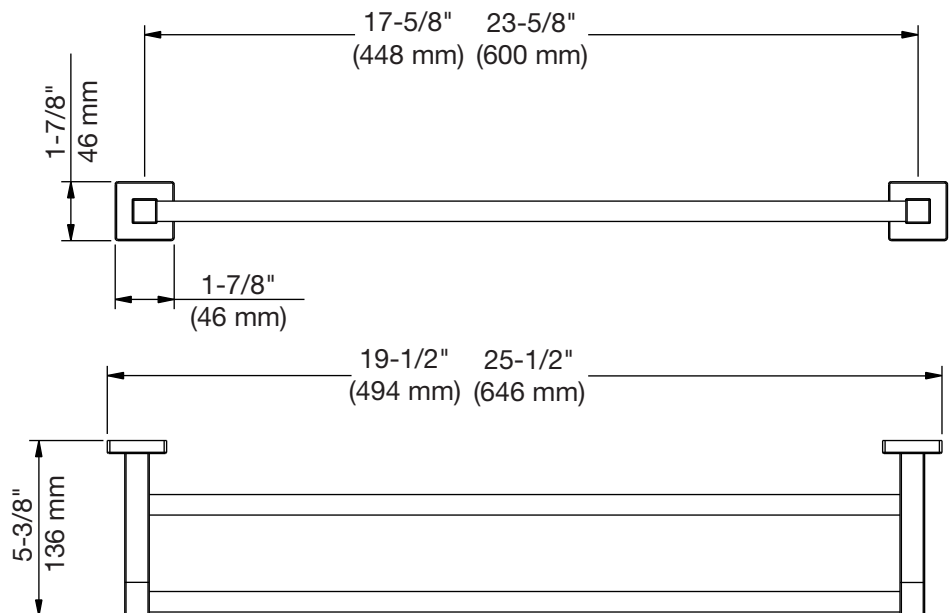
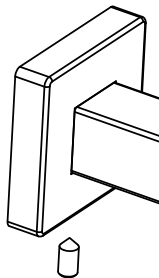
#### Feature Highlights

- Metal construction
- Mounting hardware included
- Standard finish is polished chrome

#### Warranty

- Limited Lifetime - to the original end purchaser in residential/consumer installations.
- 5 years - for commercial installations

### Dimensions *Duro Double Towel Bar, 363DTB-18 and 363DTB-24*



**Note:** Dimensions subject to change without notice