

# ProPEX brass sweat adapters

## Project Information

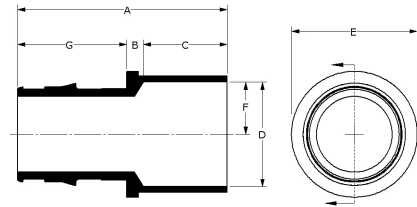
Job name:	Location:
Engineer:	Date submitted:
Contractor:	Submitted by:
Manufacturer's representative:	Approved by:

## Technical data

Temp/pressure ratings	73 °F (23 °C) at 160 psi (11 bar) 180 °F (82 °C) at 100 psi (6.9 bar) 200 °F (93 °C) at 80 psi (5.5 bar)
Prop 65 label required?	Yes

## Product information and application use

ProPEX® brass sweat adapters transition Uponor PEX pipe to copper pipe for use in hydronic heating and cooling systems. One end of the adapter is manufactured with the Uponor ProPEX fitting for connection to Wirsbo hePEX™ pipe and the other end is manufactured to adapt copper sweat connections. These adapters are not safe for direct burial in soil. Note: Not for potable use.



Part name	Part no.	A [inch]	B [inch]	C [inch]	D [inch]	E [inch]	F [inch]	G [inch]	Cv	Weight per UOM [lbs/UOM]	Equivalent length through [ft]
ProPEX LF Brass Sweat Adapter, 3" PEX x 3" Copper	LF4513030	5.33	0.29	1.66	3.13	3.79	1.565	3.38	189.1	2.85	8.79
ProPEX LF Brass Sweat Adapter, 3/8" PEX x 1/2" Copper	LF4513850	1.32	0.229	0.5	0.629	0.719	0.315	0.591	5.7	0.05	2
ProPEX LF Brass Sweat Adapter, 1/2" PEX x 3/4" Copper	LF4515075	1.634	0.175	0.75	0.879	0.987	0.439	0.709	5.1	0.09	2.7
ProPEX Brass Sweat Adapter, 5/8" PEX x 1/2" Copper	Q4516350	1.491	0.125	0.5	0.629	0.94	0.315	0.866	-	0.11	-
ProPEX Brass Sweat Adapter, 5/8" PEX x 3/4" Copper	Q4516375	1.866	0.25	0.75	0.879	1.04	0.439	0.866	-	0.16	-
ProPEX Brass Sweat Adapter, 1" PEX x 1" Copper	Q5511010	2.256	0.165	0.91	1.132	1.36	0.566	1.181	22.1	0.31	2.4
ProPEX Brass Sweat Adapter, 1 1/4" PEX x 1 1/4" Copper	Q5511313	2.6	0.185	0.97	1.382	1.72	0.691	1.445	34	0.4	3.9
ProPEX Brass Sweat Adapter, 1 1/2" PEX x 1 1/2" Copper	Q5511515	3.049	0.255	1.09	1.633	1.9	0.817	1.704	45.5	0.65	4.3
ProPEX Brass Sweat Adapter, 2" PEX x 2" Copper	Q5512020	3.797	0.31	1.34	2.133	2.68	1.067	2.147	83.6	2	5.3
ProPEX Brass Sweat Adapter, 1/2" PEX x 1/2" Copper	Q5515050	1.368	0.159	0.5	0.631	0.77	0.315	0.709	5.7	0.06	2
ProPEX Brass Sweat Adapter, 3/4" PEX x 1" Copper	Q5517510	2.07	0.215	0.91	1.132	1.26	0.566	0.945	10.9	0.3	3.7
ProPEX Brass Sweat Adapter, 3/4" PEX x 1/2" Copper	Q5517550	1.675	0.23	0.5	0.631	1.1	0.315	0.945	8.8	0.1	1.4
ProPEX Brass Sweat Adapter, 3/4" PEX x 3/4" Copper	Q5517575	1.845	0.15	0.75	0.881	1.1	0.441	0.945	13.4	0.15	2.1

Part name	Part no.	Material group	End Type 1	End Type 2
ProPEX LF Brass Sweat Adapter, 3" PEX x 3" Copper	LF4513030	-	ProPEX 3"	Sweat 3"
ProPEX LF Brass Sweat Adapter, 3/8" PEX x 1/2" Copper	LF4513850	-	ProPEX 3/8"	Sweat 1/2"
ProPEX LF Brass Sweat Adapter, 1/2" PEX x 3/4" Copper	LF4515075	-	ProPEX 1/2"	Sweat 3/4"
ProPEX Brass Sweat Adapter, 5/8" PEX x 1/2" Copper	Q4516350	-	ProPEX 5/8"	Sweat 1/2"
ProPEX Brass Sweat Adapter, 5/8" PEX x 3/4" Copper	Q4516375	-	ProPEX 5/8"	Sweat 3/4"
ProPEX Brass Sweat Adapter, 1" PEX x 1" Copper	Q5511010	-	ProPEX 1"	Sweat 1"
ProPEX Brass Sweat Adapter, 1 1/4" PEX x 1 1/4" Copper	Q5511313	-	ProPEX 1-1/4"	Sweat 1-1/4"

ProPEX Brass Sweat Adapter, 1 1/2" PEX x 1 1/2" Copper	Q5511515	-	ProPEX 1-1/2"	Sweat 1-1/2"
ProPEX Brass Sweat Adapter, 2" PEX x 2" Copper	Q5512020	-	ProPEX 2"	Sweat 2"
ProPEX Brass Sweat Adapter, 1/2" PEX x 1/2" Copper	Q5515050	-	ProPEX 1/2"	Sweat 1/2"
ProPEX Brass Sweat Adapter, 3/4" PEX x 1" Copper	Q5517510	-	ProPEX 3/4"	Sweat 1"
ProPEX Brass Sweat Adapter, 3/4" PEX x 1/2" Copper	Q5517550	-	ProPEX 3/4"	Sweat 1/2"
ProPEX Brass Sweat Adapter, 3/4" PEX x 3/4" Copper	Q5517575	-	ProPEX 3/4"	Sweat 3/4"

Installation	Related applications
Use the appropriate Uponor ProPEX ring for the pipe (sold separately). Do not solder within 18" of the ProPEX fitting. Refer to the Radiant Floor Heating Installation Handbook, Complete Design Assistance Manual (CDAM), or the Hydronic Piping Design Assistance Manual (HPDAM) for additional information.	Radiant Heating and Cooling Systems Permafrost Protection Systems Turf Conditioning Systems Hydronic Piping Systems

Codes	Standards	Listings
IMC BC IRC NPC of Canada UMC*	ASTM F1960 CSA B137.5 NSF-14 ASTM F877*	IAPMO-ES ICC-ES-PMG cNSFus-rfh*

Footnotes	Contact information
- * Some SKUs in this family have additional codes, standards, or listings. Please see uponor.com for complete information.	Uponor Inc. 5925 148th Street West Apple Valley, MN 55124 T 800.321.4739 F 952.891.2008
	Uponor Ltd. 6510 Kennedy Road Mississauga, ON L5T 2X4 T 888.594.7726 F 800.638.9517