

Basin Sinks

Sinks



BS-1818

Product Compliance

- Sink: NSF-2
- Faucet: ASME A112.18.1-2011/CSA B125.1-1, NSF-61, NSF/ANSI 372, CEC Listed, Massachusetts Approved



Standard Features

- 8" center wall splash mount faucet included
- 3-1/2" drain included (23-123)
- Rolled edge around bowl
- 18 gauge stainless steel sink
- 304 stainless steel legs with plastic bullet feet

Sink Specifications

Material/Finish	18 gauge stainless steel
Faucet	8" center splash mounted
Drain	3-1/2" drain (23-123)
Legs	304 stainless steel with plastic bullet feet

Faucet Specifications

Water Inlet	1/2" female NPT on 8" centers
Temp. Range	40°F - 180°F
Water Pressure	20 - 120 PSI
Flow Rate	1.8 GPM
Spout	8", 12", or 14" depending on sink
Material	Solid brass
Finish	Chrome plated

Model	Width	Depth	Height	Working Height	Bowls	Bowl Size	Faucet Model (Spout Size)
BS-1818	21"W	21-1/2"D	41"H	33"H	1	18"W x 18"D x 13" Deep	12-808L (8")
BS-1818-2	39"W	21-1/2"D	41"H	33"H	2	18"W x 18"D x 13" Deep	12-812L (12")
BS-1818-3	57"W	21-1/2"D	41"H	33"H	3	18"W x 18"D x 13" Deep	12-814L (14")
BS-2421	27"W	24-1/2"D	41"H	33"H	1	24"W x 21"D x 13" Deep	12-808L (8")
BS-2421-2	51"W	24-1/2"D	41"H	33"H	2	24"W x 21"D x 13" Deep	12-812L (12")

WARNING:

Plumbing connections should be made by qualified personnel who will observe all applicable plumbing, sanitary and safety codes.

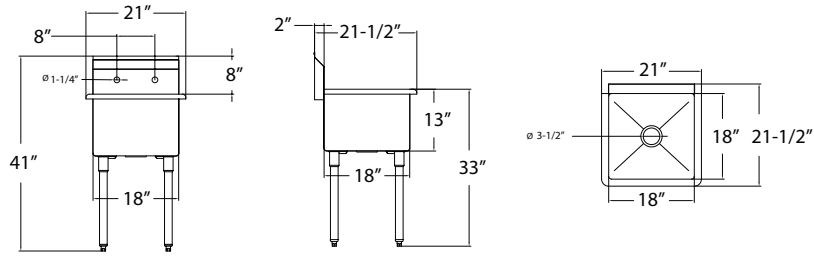
California Prop 65 Warning:

This product can expose you to chemicals including lead and lead compounds, which are known to the State of California to cause cancer and birth defects or other reproductive harm. For more information go to www.P65Warnings.ca.gov.

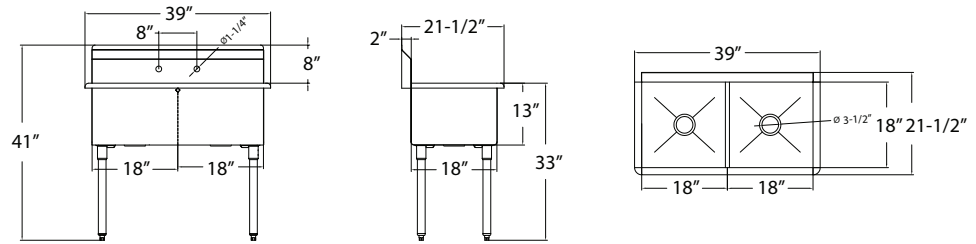
Basin Sinks

Sinks

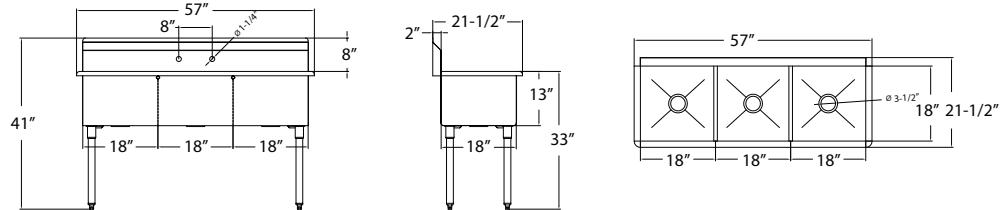
BS-1818



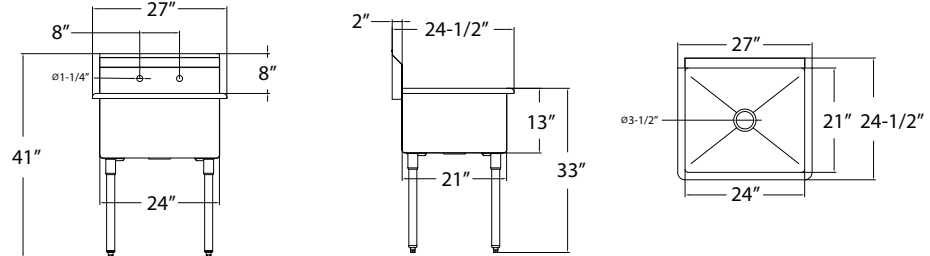
BS-1818-2



BS-1818-3



BS-2421



BS-2421-2

