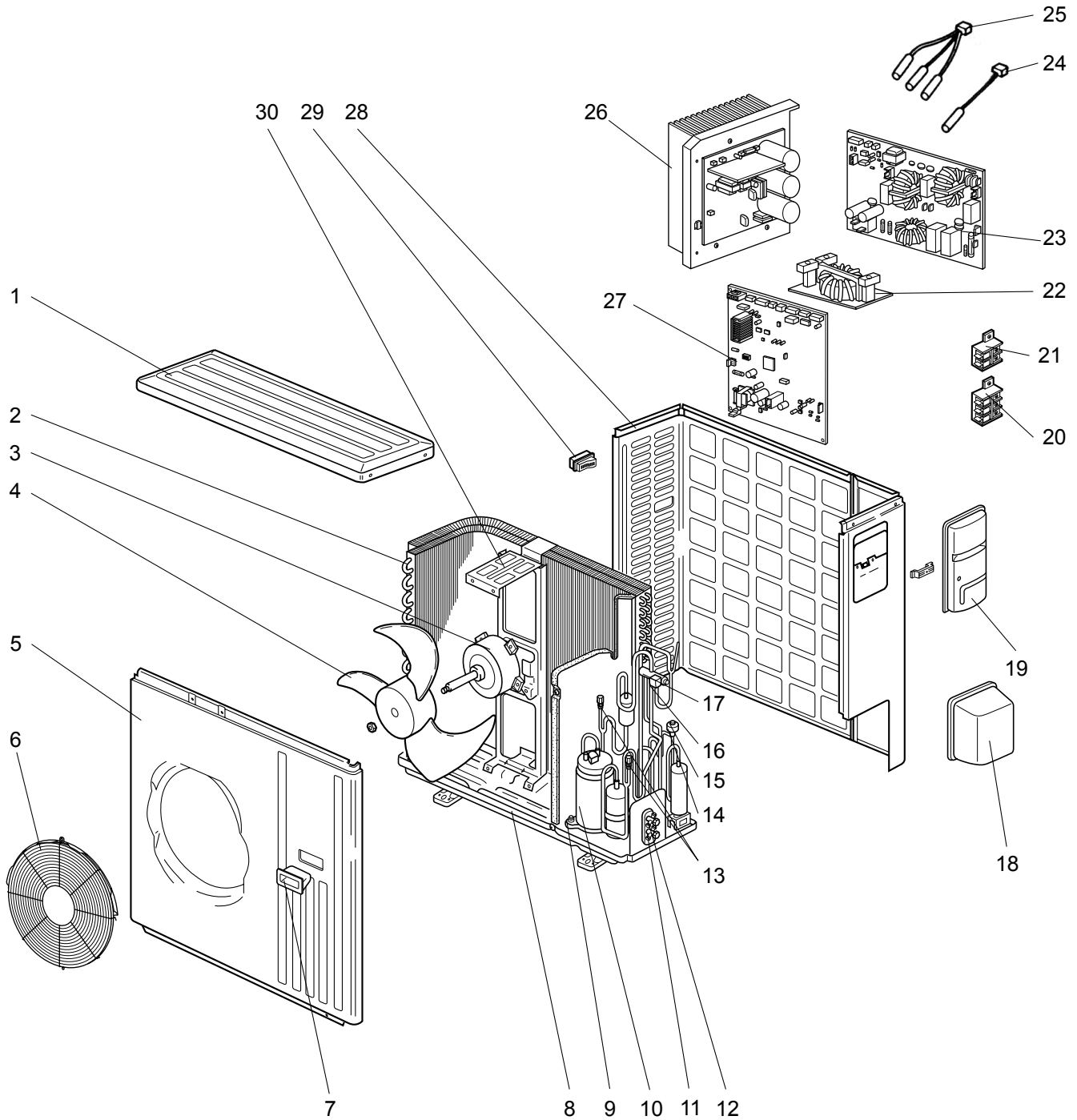


MUZ-A24NA MUY-A24NA MUZ-GA24NA MUY-GA24NA

3. OUTDOOR UNIT STRUCTURAL PARTS, ELECTRICAL PARTS AND FUNCTIONAL PARTS



### 3. OUTDOOR UNIT STRUCTURAL PARTS, ELECTRICAL PARTS AND FUNCTIONAL PARTS

Part numbers that are circled are not shown in the illustration.

No.	RoHS	Part No.	Part name	Symbol in Wiring Diagram	Q'ty/unit									Remarks
					MUZ-					MUY-				
					A24NA			GA24NA		A24NA		GA24NA		
-[1]	-[U1]	-[U2]		-[U1]		-[1]								
1	G	E12 819 297	TOP PANEL		1	1	1	1	1	1	1	1	1	
2	G	E12 A53 630	OUTDOOR HEAT EXCHANGER							1	1			
	G	E12 A58 630												
	G	E12 E34 630					1	1						
	G	E12 E35 630											1	
3	G	E12 A58 301	OUTDOOR FAN MOTOR	MF	1	1	1	1			1	1		RC0J60-□□
	G	E12 E34 301						1	1				1	
4	G	E12 851 501	PROPELLER		1	1	1	1	1	1	1	1	1	
5	G	E12 819 232	CABINET		1	1	1	1	1	1	1	1	1	
6	G	E12 D84 521	FAN GUARD		1	1	1	1	1	1				Including ice guard
	G	E12 819 521	FAN GUARD							1	1	1		
7	G	E12 819 009	HANDLE		1	1	1	1	1	1	1	1	1	
8	G	E12 851 290	BASE		1	1	1	1	1	1	1	1	1	
9	G	E12 065 506	COMPRESSOR RUBBER SET		3		3				3			3 RUBBERS/SET
	G	E12 C34 506			3		3	3	3		3	3		
10	G	E12 A56 900	COMPRESSOR	MC	1	1	1	1			1	1		SNB130FPDH
	G	E12 E34 900						1	1				1	
11	G	E12 A58 661	STOP VALVE (GAS)		1	1	1	1	1	1	1	1	1	ø5/8
12	G	E12 821 662	STOP VALVE (LIQUID)		1	1	1	1	1	1	1	1	1	ø1/4
13	G	E12 A49 641	SERVICE PORT		2	2	2	2	2	2	2	2	2	1 PC/SET
14	G	E12 851 493	EXPANSION VALVE COIL	LEV	1	1	1	1	1	1	1	1	1	
15	G	E12 851 640	EXPANSION VALVE		1	1	1	1	1	1	1	1	1	
16	G	E12 A58 490	R.V. COIL	21S4	1	1	1	1	1	1				
17	G	E12 A56 961	4-WAY VALVE		1	1	1	1	1	1	1	1	1	
18	G	E12 819 650	VALVE COVER		1	1	1	1	1	1	1	1	1	
19	G	E12 819 245	SERVICE PANEL		1	1	1	1			1	1		
	G	E12 D20 245						1	1			1		
20	G	E12 935 374	TERMINAL BLOCK	TB2	1	1	1	1	1	1	1	1	1	3 P
21	G	E12 A53 374	TERMINAL BLOCK	TB1	1	1	1	1	1	1	1	1	1	2 P
22	G	E12 851 337	REACTOR	L	1	1	1	1			1	1		
	G	E12 A87 337						1	1				1	
23	G	E12 A58 444	NOISE FILTER P.C. BOARD		1	1	1	1	1	1				
	G	E12 A53 444								1	1	1		
24	G	E12 935 309	AMBIENT TEMPERATURE THERMISTOR	RT65	1	1	1	1	1	1	1	1	1	
25	G	E12 851 308	THERMISTOR SET	RT61,RT62,RT68	1	1	1	1	1	1				DEFROST, DISCHARGE
	G	E12 A53 308		RT62,RT68						1	1	1		DISCHARGE
26	G	E12 A58 440	POWER BOARD		1	1	1	1			1	1		Including heat sink and RT64
	G	E12 E34 440						1	1			1		
27	G	E12 A58 450	OUTDOOR ELECTRONIC CONTROL P.C. BOARD		1	1								
	G	E12 A53 450								1	1			
	G	E12 B13 450				1	1							
	G	E12 E34 450						1						
	G	E12 E37 450							1					
	G	E12 E35 450											1	
28	G	E12 A58 233	BACK PANEL (OUT)		1		1				1			
	G	E12 D91 233				1		1				1		
	G	E12 E34 233						1	1				1	
29	G	E12 817 009	HANDLE		1	1	1	1	1	1	1	1	1	
30	G	E12 851 515	MOTOR SUPPORT		1	1	1	1	1	1	1	1	1	
③1	G	E12 851 936	CAPILLARY TUBE (TAPER PIPE)		1	1	1	1	1	1	1	1	1	O.D. 0.142 × I.D. 0.094 × 1-31/32