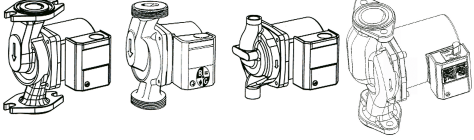


| | | |
|--------------------|------------------------|--------------|
| JOB: | REPRESENTATIVE: | |
| UNIT TAG: | ORDER NO. | DATE: |
| ENGINEER: | SUBMITTED BY: | DATE: |
| CONTRACTOR: | APPROVED BY: | DATE: |



Lead-Free[†] Bronze and Stainless Steel Bodied System Lubricated Circulators



DESCRIPTION

A series of in-line wet rotor circulation pumps designed specifically for quiet operation in open (potable) water systems. These pumps have lead-free[†] bronze or stainless steel bodies.

Automatic Timer and Aquastat accessories are available. (See Submittal A-128A for details).

CONSTRUCTION MATERIALS

Pump Body: Impeller: Noryl
Shaft: Ceramic
NBF: Lead-Free[†] Bronze
SSF: Stainless Steel
Bearings: Carbon

OPERATING DATA

Maximum Working Pressure: 150 psi (10.3 Bar)
Minimum Operating Temperature: 40°F (5°C)
Maximum Operating Temperature
NBF-25, NBF-33, NBF-36, NBF-45: 225°F (107°C)
All Others: 230°F (110°C)

[†]Contains less than 0.25% Lead content by weight on wetted surfaces.

| MODEL NUMBER | PART NUMBER | CONNECTION | APPROX. SHPG. WT. Lbs. (Kg) | STANDART 60 CYCLE 115 VOLT SINGLE PHASE | | | TAGGING INFORMATION | QUANTITY |
|---------------------|-------------|-----------------------------|-----------------------------|---|-----------|------|---------------------|----------|
| | | | | WATTS | F.L. AMPS | RPM | | |
| NBF-8S/LW | 103257LF | 1/2" Sweat | 9.0 (4.1) | 39 | 0.38 | 2800 | | |
| NBF-9U/LW | 103258LF | Union (See Following Page) | 9.3 (4.2) | 41 | 0.40 | 2800 | | |
| SSF-9U/LW | 103360LF | Union (See Following Page) | 9.3 (4.2) | 41 | 0.40 | 2800 | | |
| NBF-10S/LW | 103259LF | 1/2" Sweat | 9.0 (4.1) | 52 | 0.46 | 2800 | | |
| NBF-12U/LW | 103261LF | Union (See Following Page) | 9.3 (4.2) | 55 | 0.48 | 2800 | | |
| SSF-12U/LW | 103361LF | Union (See Following Page) | 9.3 (4.2) | 55 | 0.48 | 2800 | | |
| NBF-12F/LW | 103260LF | Flange 3/4, 1, 1-1/4, 1-1/2 | 9.5 (4.3) | 55 | 0.48 | 2800 | | |
| SSF-12F/LW | 103358LF | Flange 3/4, 1, 1-1/4, 1-1/2 | 9.5 (4.3) | 55 | 0.48 | 2800 | | |
| NBF-18S | 103316LF | 1/2" Sweat | 9.0 (4.1) | 90 | 0.74 | 3000 | | |
| NBF-22U | 103255LF | Union (See Following Page) | 9.3 (4.2) | 92 | 0.80 | 2940 | | |
| SSF-22U | 103362LF | Union (See Following Page) | 9.3 (4.2) | 92 | 0.80 | 2940 | | |
| NBF-22 | 103252LF | Flange 3/4, 1, 1-1/4, 1-1/2 | 9.5 (4.3) | 92 | 0.80 | 2940 | | |
| SSF-22 | 103357LF | Flange 3/4, 1, 1-1/4, 1-1/2 | 9.5 (4.3) | 92 | 0.80 | 2940 | | |
| NBF-25 [†] | 103418LF | Flange 3/4, 1, 1-1/4, 1-1/2 | 10.4 (4.7) | 125 | 1.10 | 2950 | | |
| NBF-33 | 103351LF | Flange 3/4, 1, 1-1/4, 1-1/2 | 10.4 (4.7) | 125 | 1.10 | 2950 | | |
| NBF-36 [†] | 103401LF | Flange 3/4, 1, 1-1/4, 1-1/2 | 13.1 (6.0) | 270 | 2.30 | 3300 | | |
| NBF-45 [†] | 103405LF | Flange 1, 1-1/4, 1-1/2 | 14.5 (6.6) | 270 | 2.30 | 3300 | | |

[†]3-speed circulators

TYPICAL SPECIFICATIONS

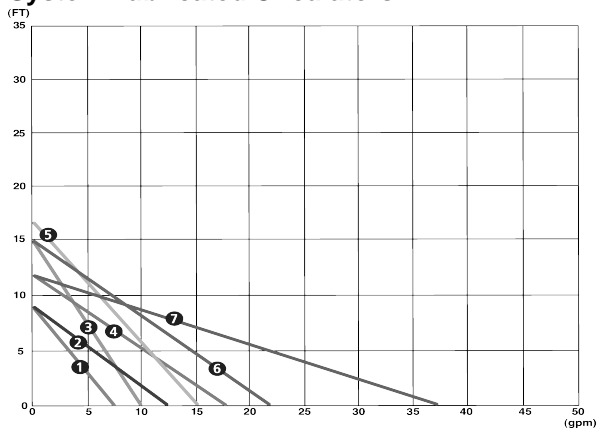
The contractor shall furnish and install in-line circulating pumps as illustrated on the plans and in accordance with the following specifications:

1. The pumps shall be of the horizontal system lubricated type specifically designed and guaranteed for quiet operation.
2. Pump to be suitable for ____°F (____°C) [choose one: 225°F (107°C) for NBF-25, NBF-33, NBF-36, NBF-45 or 230°F (110°C) for all other circulators] operation at 150 psig (10.3 Bar) working pressure.
3. The pumps shall have a ceramic shaft supported by carbon bearings. Bearings are to be lubricated by the circulating fluid.

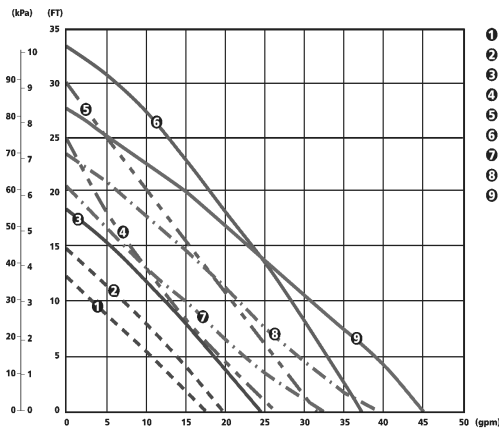
4. Pump body shall be lead-free bronze for NBF circulators or stainless steel for SSF circulators.
5. Motor stator to be isolated from circulating fluid through use of stainless steel can. Rotor to be sheathed in stainless steel.
6. Motors shall be non-overloading at any point on the pump curve. NBF-36 & NBF-45 to have built-in thermal protection. All other motors to have built-in impedance protection.
7. NBF-25 has an optional check valve.

Pumps to have a capacity of _____ GPM at _____ foot head when powered by 115 volt, 60 cycle single phase electrical supply.

All pumps are to be Xylem - Bell & Gossett Model _____.



- 1 NBF-8S/LW
- 2 NBF-9U/LW
- 3 SSF-9U/LW
- 4 NBF-10S/LW
- 5 NBF-12U/LW
- 6 SSF-12U/LW
- 7 NBF-12F/LW
- 8 NBF-18S
- 9 NBF-22
- 10 SSF-22
- 11 NBF-22U
- 12 SSF-22U
- 13 NBF-33

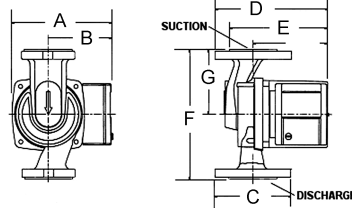
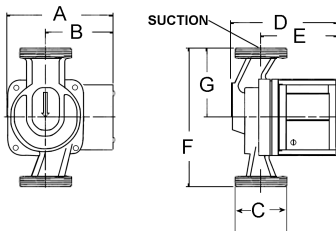
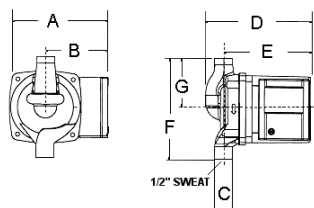
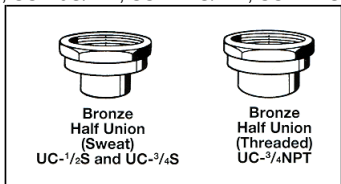


- 1 NBF-25 Speed 1
- 2 NBF-25 Speed 2
- 3 NBF-25 Speed 3
- 4 NBF-36 Speed 1
- 5 NBF-36 Speed 2
- 6 NBF-36 Speed 3
- 7 NBF-45 Speed 1
- 8 NBF-45 Speed 2
- 9 NBF-45 Speed 3

HALF UNION CONNECTIONS

For NBF-9U/LW, NBF-12U/LW, NBF-22U, SSF-9U/LW, SSF-12U/LW, SSF-22U

| MODEL NUMBER | PART NUMBER | DESCRIPTION (SETS OF 2) |
|--------------|-------------|------------------------------|
| UC-1/2S | 113203LF | 1/2" Bronze Union Sweat |
| UC-3/4S | 113201LF | 3/4" Bronze Union Sweat |
| UC-3/4NPT | 113202LF | 3/4" Bronze Union NPT Female |



| MODEL | PART NUMBER | A in (mm) | B in (mm) | C in (mm) | D in (mm) | E in (mm) | F in (mm) | G in (mm) |
|------------|-------------|-------------|-------------|-------------|--------------|--------------|-------------|-------------|
| NBF-8S/LW | 103257LF | 4-7/8 (124) | 3-3/16 (81) | 1/2 (13) | 5-7/32 (132) | 4-9/32 (109) | 5 (127) | 2-1/2 (63) |
| NBF-9U/LW | 103258LF | 4-7/8 (124) | 3-3/16 (81) | 1-1/4 (32) | 5-1/16 (129) | 3-11/16 (93) | 6-1/8 (156) | 3-1/16 (78) |
| SSF-9U/LW | 103360LF | 4-7/8 (124) | 3-3/16 (81) | 1-1/4 (32) | 5-1/16 (129) | 3-11/16 (93) | 6-1/8 (156) | 3-1/16 (78) |
| NBF-10S/LW | 103259LF | 4-7/8 (124) | 3-3/16 (81) | 1/2 (13) | 5-7/32 (132) | 4-9/32 (109) | 5 (127) | 2-1/2 (63) |
| NBF-12U/LW | 103261LF | 4-7/8 (124) | 3-3/16 (81) | 1-1/4 (32) | 5-1/16 (129) | 3-11/16 (93) | 6-1/8 (156) | 3-1/16 (81) |
| SSF-12U/LW | 103361LF | 4-7/8 (124) | 3-3/16 (81) | 1-1/4 (32) | 5-1/16 (129) | 3-11/16 (93) | 6-1/8 (156) | 3-1/16 (78) |
| NBF-12F/LW | 103260LF | 4-7/8 (124) | 3-3/16 (81) | 3-3/16 (81) | 5-9/16 (141) | 3-11/16 (93) | 6-3/8 (162) | 3-3/16 (82) |
| SSF-12F/LW | 103358LF | 4-7/8 (124) | 3-3/16 (81) | 3-3/16 (81) | 5-9/16 (141) | 3-11/16 (93) | 6-3/8 (162) | 3-3/16 (82) |
| NBF-18S | 103316LF | 4-7/8 (124) | 3-3/16 (81) | 1/2 (13) | 5-7/32 (132) | 4-9/32 (109) | 5 (127) | 2-1/2 (63) |
| NBF-22U | 103255LF | 4-7/8 (124) | 3-3/16 (81) | 1-1/4 (32) | 5-1/16 (129) | 3-11/16 (93) | 6-1/8 (156) | 3-1/16 (78) |
| SSF-22U | 103362LF | 4-7/8 (124) | 3-3/16 (81) | 1-1/4 (32) | 5-1/16 (129) | 3-11/16 (93) | 6-1/8 (156) | 3-1/16 (78) |
| NBF-22 | 103252LF | 4-7/8 (124) | 3-3/16 (81) | 3-3/16 (81) | 5-9/16 (141) | 3-11/16 (93) | 6-3/8 (162) | 3-3/16 (82) |
| SSF-22 | 103357LF | 4-7/8 (124) | 3-3/16 (81) | 3-3/16 (81) | 5-9/16 (141) | 3-11/16 (93) | 6-3/8 (162) | 3-3/16 (82) |
| NBF-25* | 103418LF | 5-1/8 (130) | 3-3/16 (81) | 3-3/16 (81) | 6-3/16 (157) | 4-7/8 (124) | 6-3/8 (162) | 2-1/2 (63) |
| NBF-33 | 103351LF | 4-7/8 (124) | 3-3/16 (81) | 3-3/16 (81) | 6-3/16 (157) | 3-11/16 (94) | 6-3/8 (162) | 3-3/16 (82) |
| NBF-36* | 103401LF | 5-3/4 (146) | 3-9/16 (91) | 3-3/16 (81) | 6-3/16 (157) | 5-3/8 (137) | 6-3/8 (162) | 3-3/16 (82) |
| NBF-45* | 103405LF | 5-3/4 (146) | 3-9/16 (91) | 3-7/16 (87) | 7-3/8 (187) | 5-1/2 (140) | 8-1/2 (216) | 4-1/4 (108) |

Dimensions are subject to change. Not to be used for construction purposes unless certified.

Companion Flanges Available in Sizes: 3/4", 1", 1-1/4", and 1-1/2"

* 3-speed circulators

Xylem Inc.
8200 N. Austin Avenue
Morton Grove, IL 60053
Phone: (847)966-3700
Fax: (847)965-8379
www.bellgosssett.com

