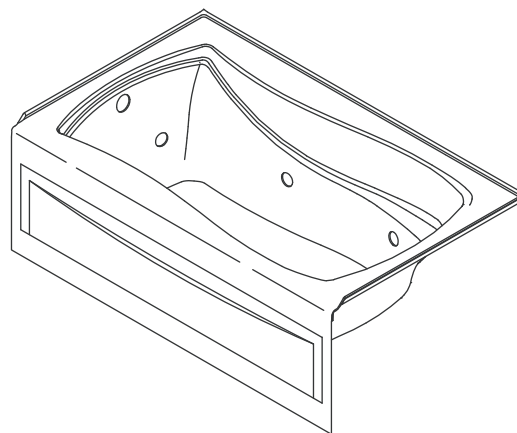


Features

- Acrylic
- 5 individually adjustable ProFlex® hydro-massage jets
- Pump with air switch and grounding-type plug-in cord
- Integral apron with removable access panel
- In-line heater
- Left or right drain
- Textured bottom surface
- Optional K-1234 removable apron
- Optional K-9695 metal finish 5 jet trim kit
- Integral tile flange on three sides for alcove installation
- 66" (1676 mm) x 35-7/8" (911 mm) x 20" (508 mm)

BATH WHIRLPOOL WITH INTEGRAL APRON AND HEATER

K-1224-HL
ALSO K-1224-HR



Codes/Standards Applicable

Specified model meets or exceeds the following:

- ANSI Z124.1.2
- ASME A112.19.7
- UL 1795
- ASTM E162
- ASTM E662

Colors/Finishes

- 0: White
- Other: Refer to Price Book for additional colors/finishes

Accessories

- 0: White
- CP: Polished Chrome
- PB: Polished Brass
- Other: Refer to Price Book for additional colors/finishes

Specified Model

Model	Description	Colors/Finishes	
K-1224-HL	Bath whirlpool with integral apron and heater – left drain (shown)	<input type="checkbox"/> 0	<input type="checkbox"/> Other_____
K-1224-HR	Bath whirlpool with integral apron and heater – right drain	<input type="checkbox"/> 0	<input type="checkbox"/> Other_____

Recommended Accessories

Model	Description	CP	PB	Other
K-7166-AF	Adjustable pop-up bath drain	<input type="checkbox"/> CP	<input type="checkbox"/> PB	<input type="checkbox"/> Other_____
K-7213	Clearflo bath cable drain with PVC tubing	<input type="checkbox"/> CP		<input type="checkbox"/> Other_____
K-7214	Clearflo bath cable drain without PVC tubing	<input type="checkbox"/> CP		<input type="checkbox"/> Other_____

Product Specification

The acrylic bath whirlpool shall be 66" (1676 mm) in length, 35-7/8" (911 mm) in width, and 20" (508 mm) in height. Product shall have integral apron with removable access panel and integral tile flange on three sides for alcove installation. Product shall have a textured bottom surface and a drain at left or right. Product shall have 5 individually adjustable ProFlex hydro-massage jets, a pump with air switch and grounding-type plug-in cord, and an in-line heater. Product shall have an optional K-1234 removable apron and an optional K-9695 metal finish 5 jet trim kit. Bath whirlpool shall be Kohler Model K-1224-____-____.

MARIPOSA®

Optional Accessories

K-1234	Removable apron	<input type="checkbox"/> 0				<input type="checkbox"/> Other_____
K-9695	Metal finish 5 jet trim kit		<input type="checkbox"/> CP	<input type="checkbox"/> PB		<input type="checkbox"/> Other_____

Technical Information

Fixture*:	
Basin area:	
Bathing well, bottom	48" (1219 mm) x 24" (610 mm)
Bathing well, top	59" (1499 mm) x 30" (762 mm)
Weight	110 lbs (49.9 kg)
To overflow:	
Water depth	14" (356 mm)
Capacity	67 gal (254 L)
* Approximate measurements for comparison only.	

Pump		V	Hz	A
1-speed		120	60	12.5
Heater:	kW	V	Hz	A
	1.5	120	60	12.5

Required Electrical Service

Two dedicated circuits are required, each protected with Class A Ground-Fault Circuit-Interrupter (GFCI).

Pump/control 120 V, 15 A, 60 Hz

Heater 120 V, 15 A, 60 Hz

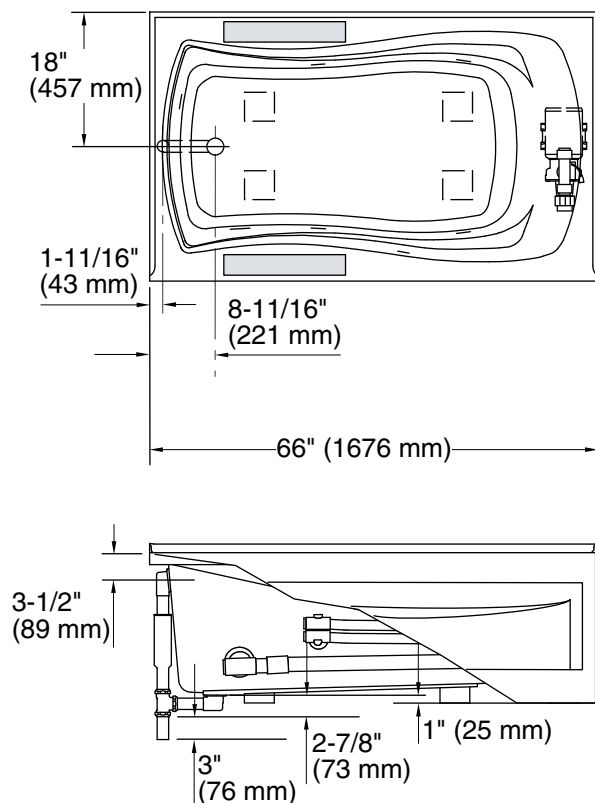
Locate the outlets behind the whirlpool and within 24" (610 mm) of the pump and heater.

Installation Notes

Install this product according to the installation guide.

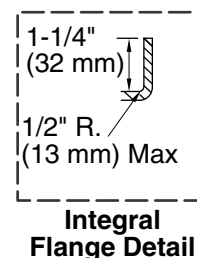
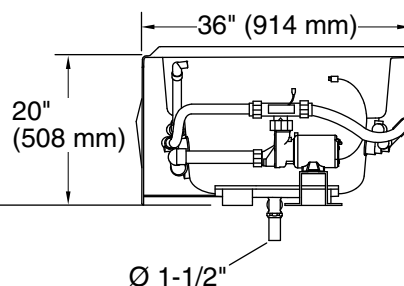
Floor support under the whirlpool must provide for a minimum of 42 lbs/square foot (205 kg/square meter) loading.

If installing a rim-mount faucet, make sure there is no interference with the drain overflow before drilling any holes. Consult local and national codes for minimum air gap requirements if installing a spout on the faucet deck.



No change in measurements with drain shown. (K-7161-AF or K-7161M-AF)

 Recommended faucet area.



Product Diagram