

OPTIONAL ELECTRIC HEAT KIT FOR MULTI-POSITION AIR HANDLER

USE WITH: PVFY-P-NAMU-E/E1; MVZ-A-AA4/7; SVZ-KP-NA; PVA-A-AA4/7



Job Name:

System Reference:

Date:

GENERAL FEATURES:

- 208/240V Electric Heat Kits
- Mounts directly to the air outlet connection of the Multi-position Air Handler

CAUTION:

- Do not power the Electric Heat Kit from the outdoor unit.
- A separate power supply must be provided.
- Air handler must be set on non-combustible floor when using electric heat in the downflow configuration.
- Maximum external static pressure of 0.60 in WG for all installations with electric heaters. For more details, see note on best design practice on page 3.

ACCESSORIES

Separate Power Kit for MVZ and PVA models This kit allows the installer to connect power from a source other than the outdoor unit to the air handler. (S2 & S3 still must connect from outdoor unit for communication)	SPTB1
Auxiliary Heat Lockout for MVZ, SVZ and PVA models This option prevents the electric heat kit from operating above a set outside temperature.	ETC-211000-MIT
Replacement Temp Probe for ETC-211000-MIT	1309007-044

(See note on best design practice on page 3)

ELECTRICAL SPECIFICATIONS

Electric Heat Part Number	Heater kW		Heater Amps ¹	MCA ¹	MOP ¹	Htr & Mtr Amps ²	MCA ²	MOP ²	Factory Installed Circuit Breaker
	208V/240V		208V/240V	208V/240V	208V/240V	208V/240V	208V/240V	208V/240V	
EH03-SVZ-S	2.3/3.0		10.8/12.5	13.5/15.6	15/20	13.2/14.9	16.5/18.6	20/20	20
EH05-SVZ-S	3.8/5.0		18.1/20.8	22.6/26	25/30	20.5/23.2	25.6/29	30/30	30
EH08-SVZ-S	6.0/8.0		28.9/33.3	36.1/41.7	40/45	31.3/35.7	39.1/44.7	40/45	45
EH05-SVZ-M	3.8/5.0		18.1/20.8	22.6/26	25/30	21.4/24.1	26.7/30.2	30/30	30
EH08-SVZ-M	6.0/8.0		28.9/33.3	36.1/41.7	40/45	32.2/36.6	40.2/45.8	45/50	50
EH10-SVZ-M	7.5/10		36.1/41.7	45.1/52.1	50/60	39.4/45	49.3/56.2	50/60	60
EH03-MPA-S(B)	2.3/3.0		10.8/12.5	13.5/15.6	15/20	13.2/14.9	16.5/18.6	20/20	20
EH05-MPA-S(B)	3.8/5.0		18.1/20.8	22.6/26	25/30	20.5/23.2	25.6/29	30/30	30
EH08-MPA-S(B)	6.0/8.0		28.9/33.3	36.1/41.7	40/45	31.3/35.7	39.1/44.7	40/45	45
EH03-MPA-M(B)	2.3/3.0		10.8/12.5	13.5/15.6	15/20	14.1/15.8	17.7/19.8	20/20	20
EH05-MPA-M(B)	3.8/5.0		18.1/20.8	22.6/26	25/30	21.4/24.1	26.7/30.2	30/30	30
EH08-MPA-M(B)	6.0/8.0		28.9/33.3	36.1/41.7	40/45	32.2/36.6	40.2/45.8	45/50	50
EH10-MPA-M(B)	7.5/10		36.1/41.7	45.1/52.1	50/60	39.4/45	49.3/56.2	50/60	60
EH10-MPA-L(B)	7.5/10		36.1/41.7	45.1/52.1	50/60	40.6/46.2	50.8/57.7	60/60	60
EH15-MPAS-L(B)	11.3/15	Circuit 1	27.1/31.2	33.9/39.1	35/40	31.6/35.8	39.5/44.7	40/45	45
		Circuit 2	27.1/31.2	33.9/39.1	35/40	27.1/31.2	33.9/39.1	35/40	40
EH17-MPAS-L(B)	13.2/17.5	Circuit 1	31.6/36.5	39.5/45.6	40/50	36.1/41	45.1/51.2	45/60	60
		Circuit 2	31.6/36.5	39.5/45.6	40/50	31.6/36.5	39.5/45.6	40/50	50

¹ Heater amps; no motor

² Heater and motor amps (connect air handler power supply to largest circuit breaker)
60Hz

Motor amps are placed on circuit 1 when required

Unit tested at 0.60 in WG external static pressure

Minimum installation clearance to combustible material 0"

Maximum outlet air temperature 200° F

AVAILABLE COMBINATIONS: ELECTRIC HEAT KIT

(See note on best design practice on page 3)

NOTE:

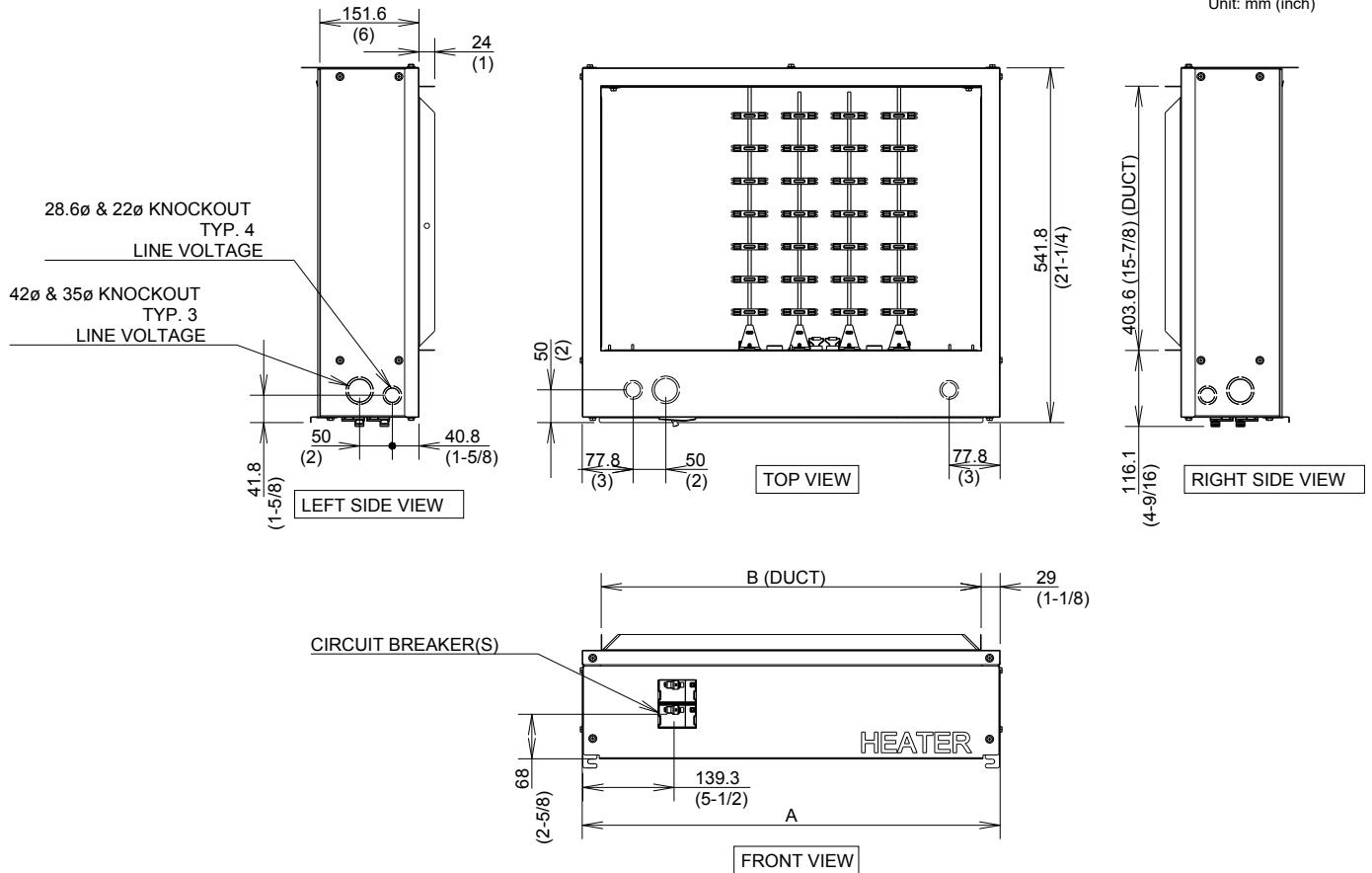
- No other combination approved.

MODEL PER OUTDOOR UNIT

Filter Box with MERV 13 Filters	Filter Box with MERV 13 Filters	EH03-MPA-S(B)	EH05-MPA-S(B)	EH08-MPA-S(B)	EH03-SVZ-S	EH05-SVZ-S	EH08-SVZ-S	EH03-MPA-M(B)	EH05-MPA-M(B)	EH08-MPA-M(B)	EH05-SVZ-M	EH08-SVZ-M	EH10-SVZ-M	EH10-MPA-M(B)	EH10-MPA-L(B)	EH15-MPAS-L(B)	EH17-MPAS-L(B)	
		3	5	4+4	3	5	4+4	3	5	4+4	5	4+4	5+5	5+5	5+5	7.5+7.5	8.75+8.75	
Air Handler Model	PVfy-P12NAMU-E PVfy-P12NAMU-E1	○	○															
	PVfy-P18NAMU-E PVfy-P18NAMU-E1	○	○	○														
	PVfy-P24NAMU-E PVfy-P24NAMU-E1	○	○	○														
	PVfy-P30NAMU-E PVfy-P30NAMU-E1							○	○	○					○			
	PVfy-P36NAMU-E PVfy-P36NAMU-E1									○					○			
	PVfy-P48NAMU-E PVfy-P48NAMU-E1															○	○	○
	PVfy-P54NAMU-E PVfy-P54NAMU-E1															○	○	○
	MVZ-A12AA4 MVZ-A12AA7	○	○															
	MVZ-A18AA4 MVZ-A18AA7	○	○	○														
	MVZ-A24AA4 MVZ-A24AA7	○	○	○														
	MVZ-A30AA4 MVZ-A30AA7							○	○	○					○			
	MVZ-A36AA4 MVZ-A36AA7									○					○			
	SVZ-KP12NA				○	○												
	SVZ-KP18NA				○	○	○											
	SVZ-KP24NA				○	○	○											
	SVZ-KP30NA										○	○	○					
	SVZ-KP36NA																	
	PVA-A12AA7	○	○															
	PVA-A18AA7	○	○	○														
	PVA-A24AA7							○	○	○					○			
	PVA-A30AA4 PVA-A30AA7							○	○	○					○			
	PVA-A36AA4 PVA-A36AA7															○	○	
	PVA-A42AA4 PVA-A42AA7															○	○	○

DIMENSIONS: ELECTRIC HEAT KIT

Unit: mm (inch)



Unit: mm (inch)

ACCESSORIES	A	B
EH03-MPA-S(B)	433 (17)	376 (14-13/16)
EH05-MPA-S(B)		
EH08-MPA-S(B)		
EH03-SVZ-S		
EH05-SVZ-S		
EH08-SVZ-S	534 (21)	477 (18-13/16)
EH03-MPA-M(B)		
EH05-MPA-M(B)		
EH08-MPA-M(B)		
EH10-MPA-M(B)		
EH05-SVZ-M		
EH08-SVZ-M		
EH10-SVZ-M	635 (25)	579 (22-13/16)
EH10-MPA-L(B)		
EH15-MPAS-L(B)		
EH17-MPAS-L(B)		

NOTE

BEST DESIGN PRACTICE TO ASSURE ADEQUATE AIRFLOW REQUIREMENTS:

During electric heater operation the fan is defaulted to high speed to help assure adequate airflow. To maintain adequate airflow required for electric heater operation, it is recommended that an additional 0.20 WG static pressure drop be added to system ductwork design when using the electric heat kit.

Examples:

When air handler is set for 0.50 WG static, the maximum external static pressure for ductwork should not exceed 0.30 WG.

When air handler is set for 0.80 WG static, the maximum external static pressure for ductwork should not exceed 0.60 WG, etc

Manufactured for Mitsubishi Electric US, INC
1340 Satellite Boulevard, Suwanee, GA 30024
Toll Free: 800-433-4822 www.mehvac.com