

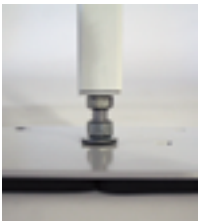
QUICK-SLING MINI-SPLIT STANDS

QSMS1200 • QSMS1201 • QSMS1800 • QSMS1801 • QSMS2400 • QSMS2401

U.S. PATENT NO. 8,827,232 B2

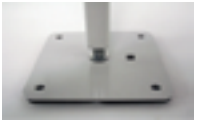


- Our Mini Split Stands provide a safe, stable platform to mount your unit on.
- Keeps unit elevated above lawn mowers, weed whackers, pets, snow, and flooding.
- Elevated height allows for ease of installation, maintenance, and service.



Each foot is 6"x 6" 11 gauge steel and is adjustable up to 1.25" in height.

(4) 3/8" holes allow the stand to be bolted to any surface for security and stability.



Additional carriage bolt hole allows for optional footprint reduction to 34 1/16"



50-derometer rubber pads are included.

Our Mini Split Stand is made of 14-gauge square tubing which is powder coated for outdoor use and able to hold up to 400 lbs.



18" and 24" stands are equipped with additional support arms



Each stand comes with 2 arms slotted to fit all units on the market. See compatibility charts at www.quick-sling.com. All necessary hardware is provided.



4 points of anti-vibration isolation washers are provided.



12", 18", & 24" stands are available in 2 depths:
QSMS1200 - Thin QSMS1201 - Wide
QSMS1800 - Thin QSMS1801 - Wide
QSMS2400 - Thin QSMS2401 - Wide



Adjustable in length from 34" to 40" in 1" increments.

visit www.quick-sling.com for Mini Split compatibility charts.