

# FBF-3060LM/RM 30 x 60 Veritek™ Alcove Shower Pan

**Model number:**

FB03060LM.010

**Dimensions:** 60" x 30" x 4.1875"

**Installation:** Alcove

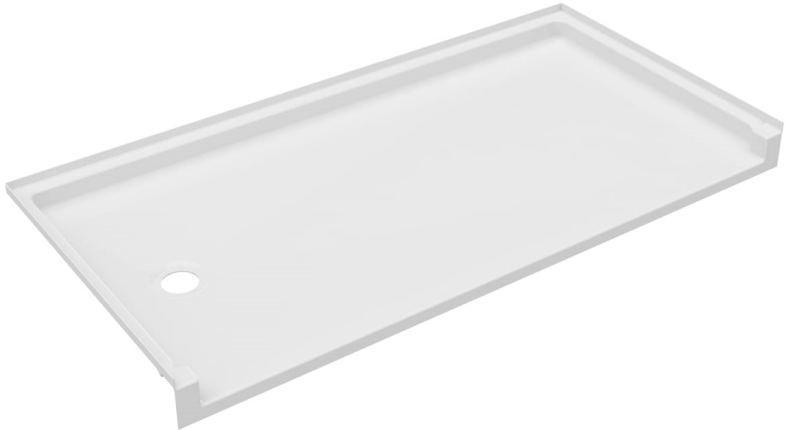
**Material:** Veritek

### Standard Features:

- Model Size: 60 L in. X 30 W in. X 4.5 H in.
- 1 3/8 in. threshold height
- Alcove shower pan
- Made of durable and long-lasting compression molded Veritek material
- Slip-resistant textured bottom

### Product characteristics:

- Veritek compatible
- Molded-in FitFlo drain
- Coordinating wall set available



### Standard Colors:



White

### Certifications

SWAN products adhere to one or more of the following certifications:



# FBF-3060LM/RM 30 x 60 Veritek™ Alcove Shower Pan

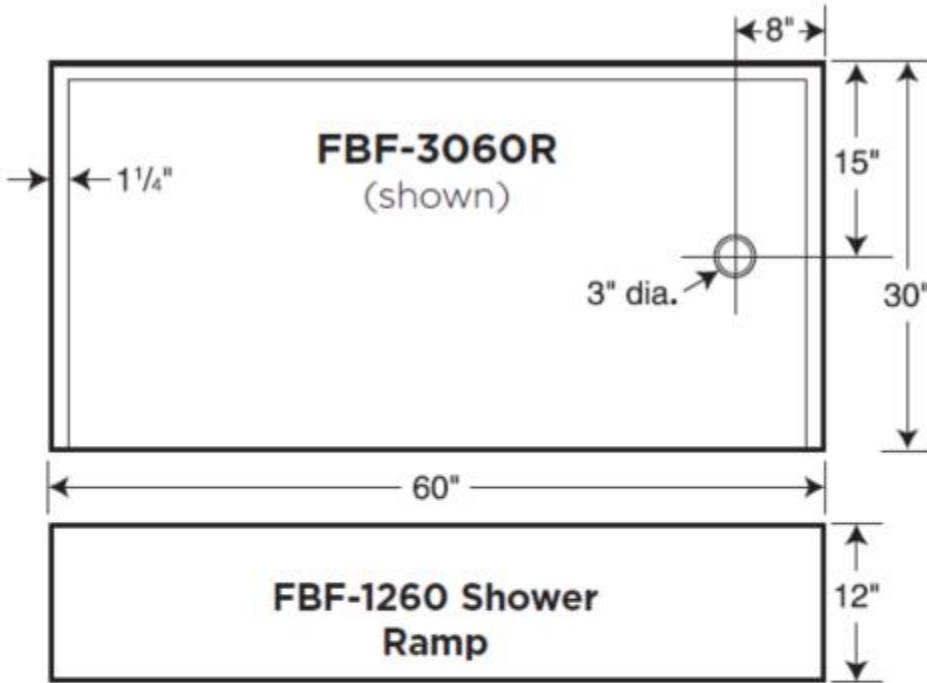
**Model number:**

FB03060LM.010

**Dimensions:** 60" x 30" x 4.1875"

**Installation:** Alcove

**Material:** Veritek



## Dimensions

60 x 30 x 4 1/4 In.  
(1524 x 762 x 106 mm)

## Weight

58 lbs - 26 kg

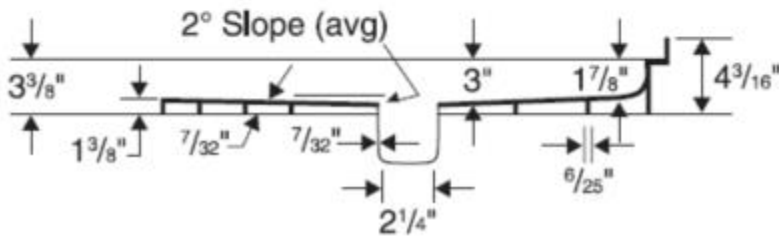
## Shape

Rectangular

## Drain location:

Left

Right



Project:

Contractor:

Representative:

Date:

Tel:

Notes:

