

Features

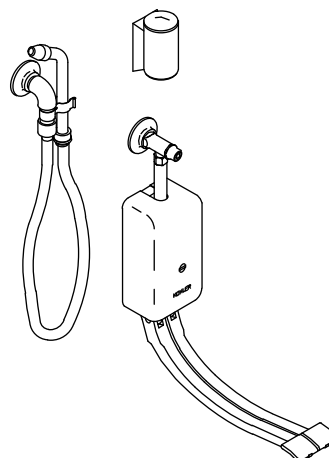
- Brass construction
- Machined aluminum double foot control
- Self-closing 14" (356 mm) hinged pedal action
- Double foot control mixing valve with integral stops
- 3/8" NPT inside threaded inlets
- Outlet to wall with volume control
- Elevated vacuum breaker
- Hose with angle spray nozzle
- Insulated handle and spray hook

Codes/Standards Applicable

Specified model meets or exceeds the following:

- ASME A112.18.1/CSA B125.1
- ASSE 1001

BEDPAN WASHER K-13960



Colors/Finishes

- CP: Polished Chrome

Specified Model

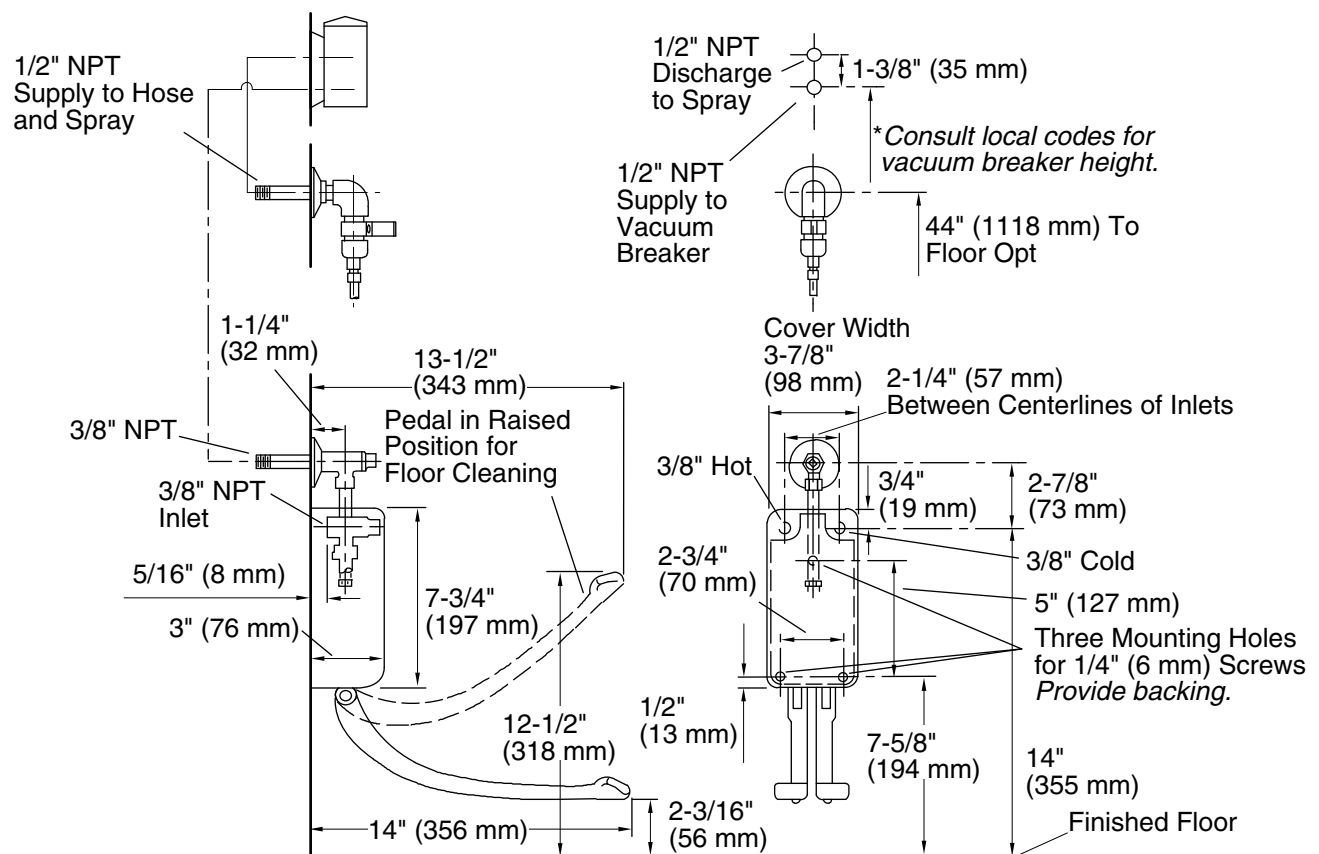
Model	Description	Colors/Finishes
K-13960	Bedpan washer – double foot control	<input type="checkbox"/> CP

Product Specification

Wall-mount bedpan washer shall be of brass construction. Product shall feature a machined aluminum double foot control with self-closing 14" (356 mm) hinged pedal action. Double foot control shall feature a mixing valve with integral stops. Product shall have an outlet to wall with volume control, elevated vacuum breaker, and 3/8" NPT inside threaded inlets. Product shall feature a hose with angle spray nozzle and insulated handle and spray hook. Product shall be Kohler Model K-13960-CP.

Installation Notes

Install this product according to the installation guide.



Product Diagram