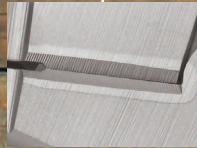


# LONG NOSE PLIERS

Only CHANNELLOCK® uses precision machined knife and anvil style cutting edges to ensure perfect mating and superior cutting edge life.  
 Seul CHANNELLOCK® utilise des bords tranchants de type couteau et contre-lame usinés avec précision afin d'assurer un ajustement parfait et une durabilité supérieure des tranchants.  
 Sólo CHANNELLOCK® utiliza filos de corte de precisión con cuchillos de estilo "punto y plano" que aseguran el alineamiento perfecto y una mayor duración del filo de corte.

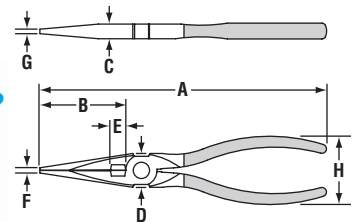
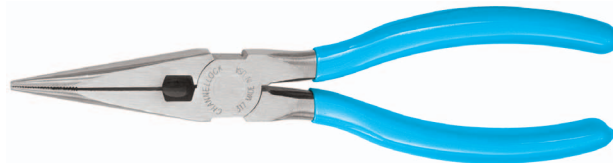
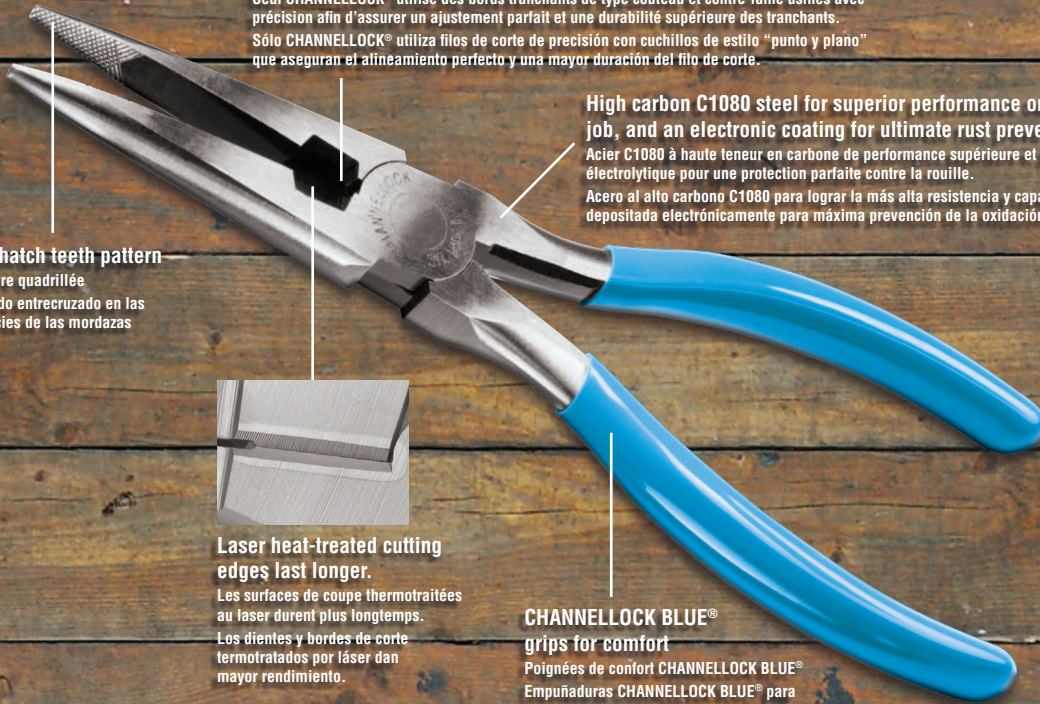
High carbon C1080 steel for superior performance on the job, and an electronic coating for ultimate rust prevention.  
 Acier C1080 à haute teneur en carbone de performance supérieure et poli électrolytique pour une protection parfaite contre la rouille.  
 Acero al alto carbono C1080 para lograr la más alta resistencia y capa depositada electrónicamente para máxima prevención de la oxidación.

Crosshatch teeth pattern  
 Dentelure quadrillée  
 Ranurado entrecruzado en las superficies de las mordazas



Laser heat-treated cutting edges last longer.  
 Les surfaces de coupe thermotraitées au laser durent plus longtemps.  
 Los dientes y bordes de corte termotratados por láser dan mayor rendimiento.

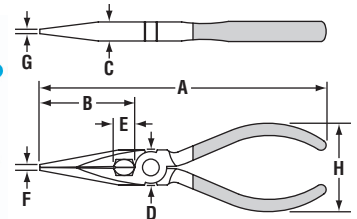
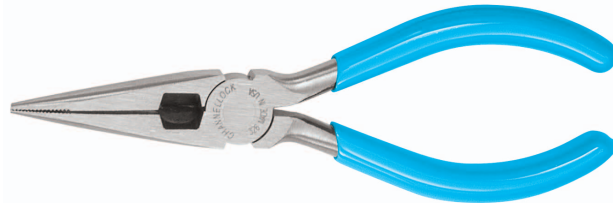
CHANNELLOCK BLUE® grips for comfort  
 Poignées de confort CHANNELLOCK BLUE®  
 Empuñaduras CHANNELLOCK BLUE® para mayor comodidad de las manos



## Features

- 317 – with side cutter
- 3017 – without side cutter
- 317 – avec coupe-fil de côté
- 3017 – sans coupe-fil de côté
- 317 – con corte lateral
- 3017 – sin corte lateral

PLIER	A OVERALL LENGTH		B JAW LENGTH		C JOINT THICKNESS		D JOINT WIDTH		E CUTTING EDGE		F NOSE WIDTH		G NOSE THICKNESS		H HANDLE SPAN		WEIGHT	
	in	mm	in	mm	in	mm	in	mm	in	mm	in	mm	in	mm	in	mm	pounds	grams
317	8.00	203.20	2.36	59.94	0.41	10.41	0.87	22.10	0.41	10.41	0.14	3.56	0.11	2.79	1.89	48.01	0.55	249.48
3017	8.00	203.20	2.36	59.94	0.41	10.41	0.87	22.10	N/A	N/A	0.14	3.56	0.11	2.79	1.89	48.01	0.55	249.48



## Features

- 326 – with side cutter
- 3026 – without side cutter
- 326 – avec coupe-fil de côté
- 3026 – sans coupe-fil de côté
- 326 – con corte lateral
- 3026 – sin corte lateral

PLIER	A OVERALL LENGTH		B JAW LENGTH		C JOINT THICKNESS		D JOINT WIDTH		E CUTTING EDGE		F NOSE WIDTH		G NOSE THICKNESS		H HANDLE SPAN		WEIGHT	
	in	mm	in	mm	in	mm	in	mm	in	mm	in	mm	in	mm	in	mm	pounds	grams
326	6.10	154.94	2.08	52.83	0.41	10.41	0.75	19.05	0.41	10.41	0.10	2.54	N/A	N/A	1.89	48.01	0.36	163.29
3026	6.10	154.94	2.08	52.83	0.41	10.41	0.75	19.05	N/A	N/A	0.10	2.54	0.11	2.79	1.89	48.01	0.33	149.69