

VURSA kd SERIES  
TUB / SHOWER

Oasis®

TS4P-6032R / BP1-60 shown



MULTI-PIECE MODEL

TS4P-6032 (4-piece)

Rough-In Dimensions

60" wide x 33-1/4" deep x 77" high (w/ 16-inch apron)

Finished Dimensions

60" wide x 32" deep x 75-3/4" high (w/ 16-inch apron)

Unit Features



- Four - Piece Fiberglass Composite Construction
- Sanitary Grade Polyester Gelcoat Surface
- Front-Side Installation With Minimal Sealant Requirements
- 2" Dia. End Drain
- 2-1/2" Dia. Overflow
- Apron Drip Ledge Minimizes Water Migration
- Generous, Multi-Level Back Wall Shelving
- Wall Design Accommodates Grab Bar Applications
- Textured Floor Pattern
- 1/2-inch Balsa Wood Core Floor Structure

Special Notes

- Optional ABF Model (provides 3-inches of drain clearance)
- UL Listed Whirlpool System Available
- 'QwikClic' Technology
- Factory Applied Reinforcement Packages Available
- Factory Applied Bar Configurations Available

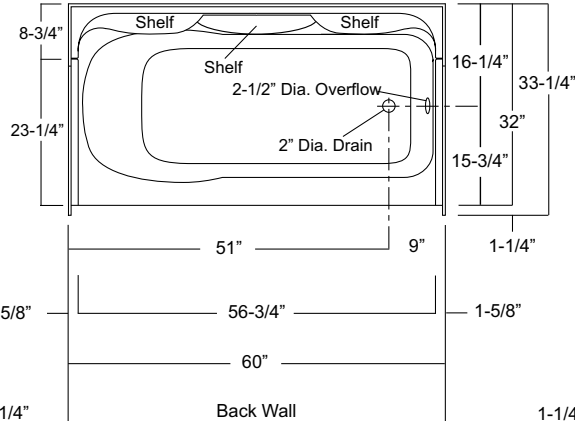
Order No.: TS4P-6032R (RH drain / 16" apron)  
 TS4P-6032L (LH drain / 16" apron)

Order No.: TS4P-6032R ABF (RH drain / 17-1/4" apron)  
 TS4P-6032L ABF (LH drain / 17-1/4" apron)

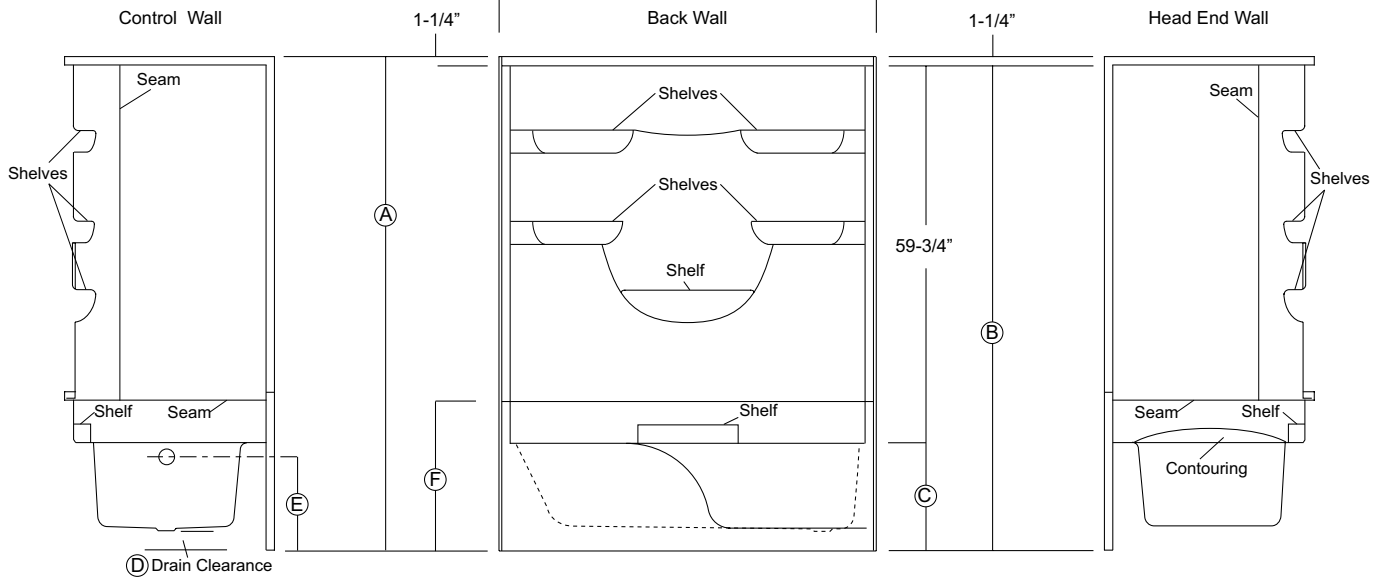
60" x 32", 4-piece gelcoated fiberglass tub/shower with 'QuikClic', front installation, 16" apron (1-3/4" drain clearance) multi-level back wall shelves, corner accessory ledge, contoured neck rest, and drain on end indicated.

TS4P-6032R ABF (illustrated)

	Base Unit	ABF Unit
A	77"	78-1/4"
B	75-3/4"	77"
C	16"	17-1/4"
D	1-3/4"	3"
E	13-3/4"	15"
F	22-3/4"	24"



Enclosure Size:  
 56-3/4"w (max) x 59-3/4"h (max)



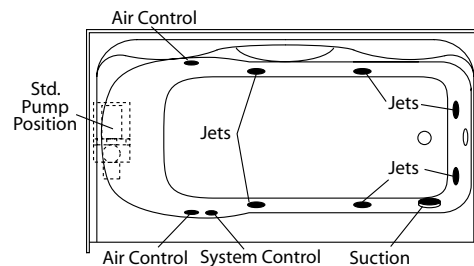
**Package Order No.: 6P (Builder System)**

Package includes: 6-Adjustable jets, twin air injection controls, pneumatic on/off control, and 5.50 amp pump/motor.

- Options:
- In-Line Heater (1\*) (order: ILH)
  - Ozone Generator (1\*) (order: OZG)
  - SS Shower Rod (1\*) (order: ADD/SHWR ROD-TS)

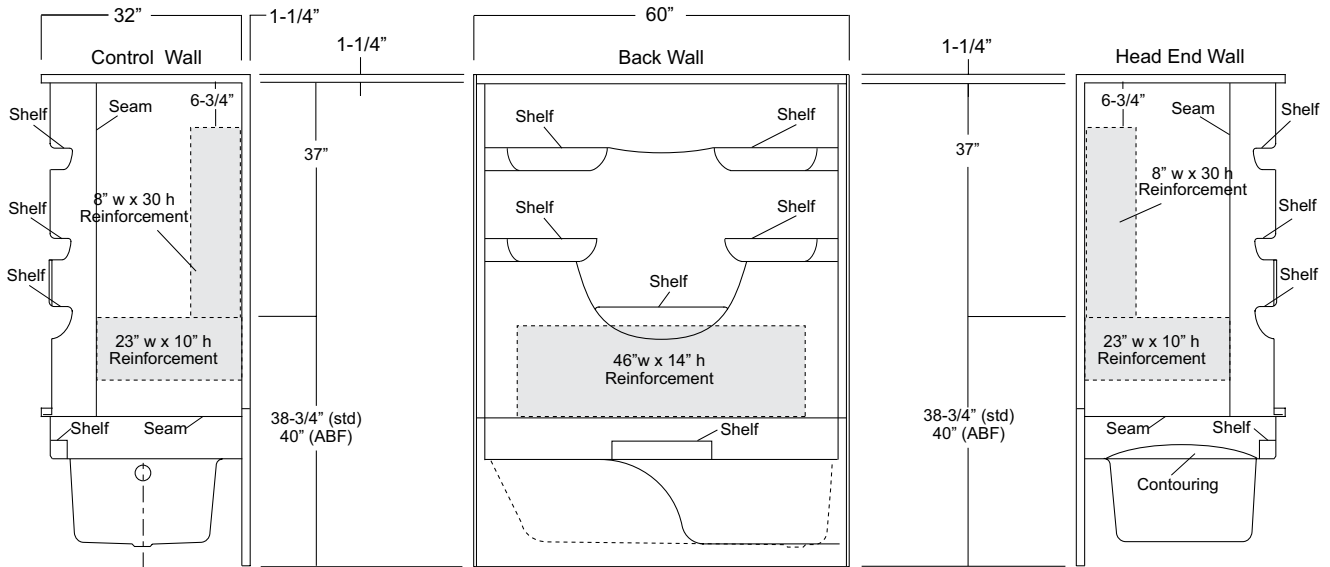
Notes: (1\*) Factory installed options  
 System available with component packages.

Sump Dimensions: 51" long x 22" wide x 13-1/4" deep  
 Sump Capacity: 42 gal. (unoccupied - to overflow)  
 Whirlpool Operating: 36 gal.



**Package Order No.: FH (Fair Housing wall reinforcement)**

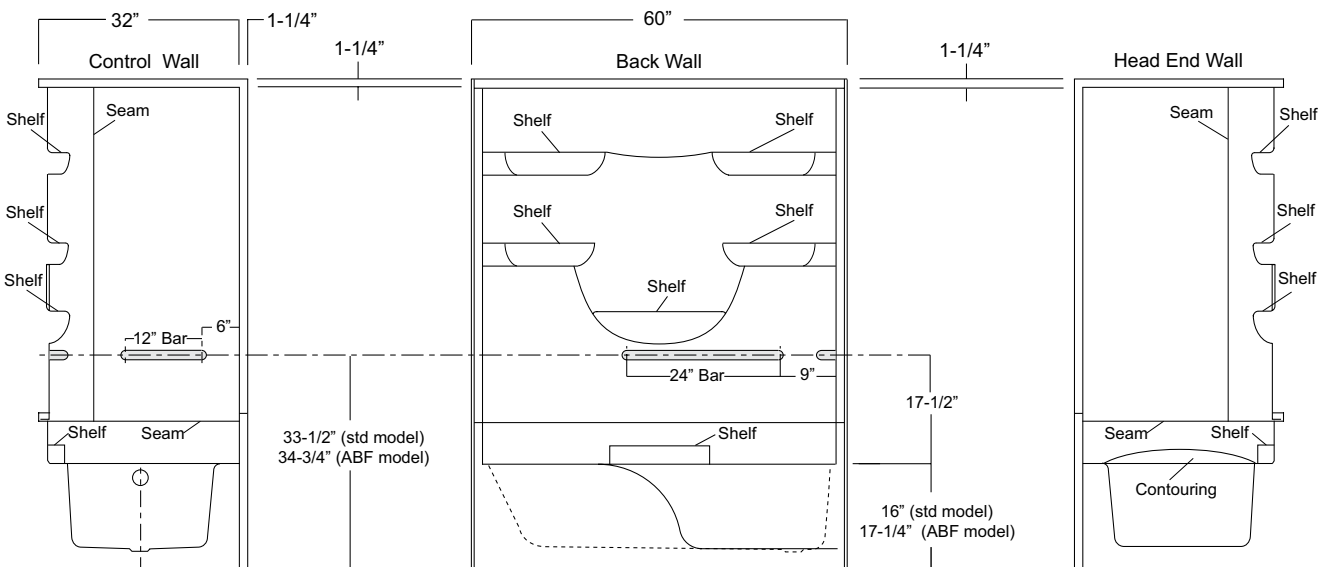
Package Includes: Factory applied, HUD-FHA compliant (Fair Housing), structurally reinforced wall areas (as shown) for independent field application of bars.



**Package Order No.: BP1-60 (2-bar only package)**

- Upgrade Package No.:**
- BP1-60 WHT (1-1/4" dia., white powder coat, 2-bar only package)**
  - BP1-60 OFW (1-1/4" dia., off-white powder coat, 2-bar only package)**
  - BP1-60 SNK (1-1/4" dia., satin nickel, 2-bar only package)**

Package Includes: Factory installed, 1-1/2" dia. stainless steel, 2-bar package with basic reinforcement for components (as shown).  
 NOTES: Positioning of factory installed components allow for the installation of a shower enclosure.



**Package Order No.:** BP2-60 (3-bar only package)  
**Upgrade Package No.:** BP2-60 WHT (1-1/4" dia., white powder coat, 3-bar only package)  
 BP2-60 OFW (1-1/4" dia., off-white powder coat, 3-bar only package)  
 BP2-60 SNK (1-1/4" dia., satin nickel, 3-bar only package)

Package Includes: Factory installed, 1-1/2" dia. stainless steel, 3-bar package with basic reinforcement for components (as shown).  
 NOTES: Positioning of factory installed components allow for the installation of a shower enclosure.

