



## 4-HOLE DECK MOUNTED BATHTUB FILLER WITH HANDSHOWER

ROHL Country Bath Arcana

**AC262L** (Ornate Metal Lever)

**AC262LM** (Classic Metal Lever)

**AC262X** (Cross Handle)

**AC262OP** (Ornate Porcelain Lever)

### FEATURES

- 4-hole bathtub filler with handshower
- 4 x 1 3/8" hole cutout
- 1/4-turn ceramic disc valves
- Fixed spout
- Retractable handshower with automatic diverter
- Spout, valve housing, and diverter knob made from solid brass
- 12 GPM @ 60 PSI
- Spout is 2-piece rough and trim
- 3/4" NPT connectors

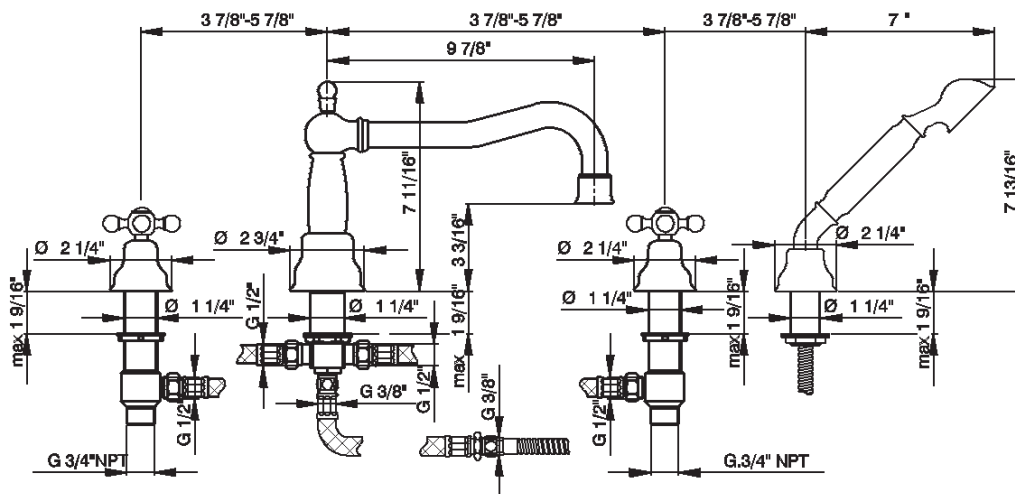
### FINISHES

- Polished Chrome
- Polished Nickel
- Satin Nickel
- Tuscan Brass
- Inca Brass

### WARRANTY

- Limited Lifetime\*
- \* No Warranty on Tuscan Brass Finish (TCB)

### AC262X



AC262L

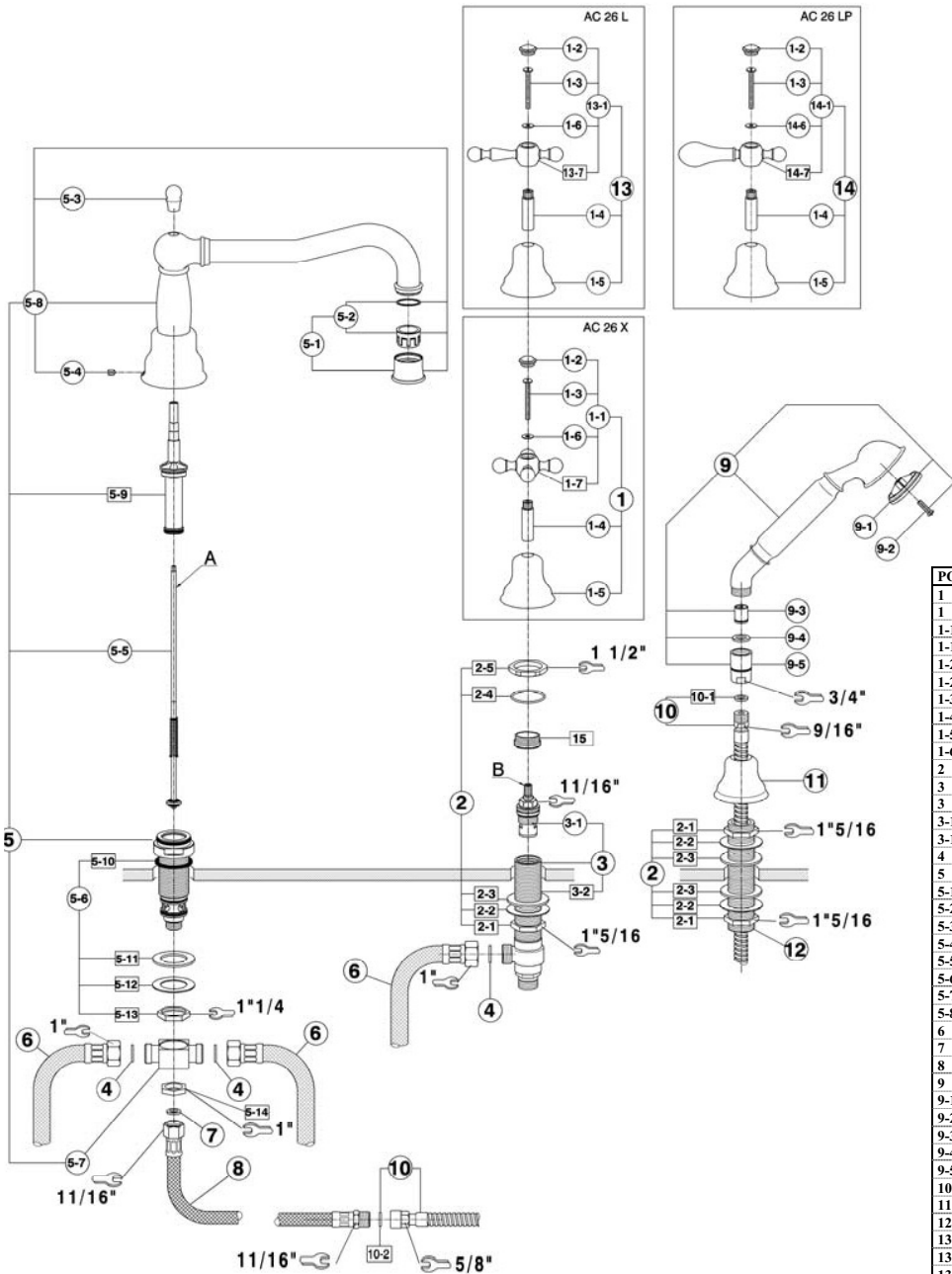


AC262OP



AC262LM

## AC262 Spare Parts



### SPARE PARTS

POS.	DESCRIPTION	CODE
1	Handle with escutcheon "AC" "Cold"	ZZ 93699 0
1	Handle with escutcheon "AC" "Hot"	ZZ 93700 0
1-1	Cross handle "Cold" mark with screw and cap - 3 hole lavatory	ZZ 92112 0
1-1	Cross handle "Hot" mark with screw and cap - 3 hole lavatory	ZZ 92111 0
1-2	Cap for handle "AR" "Cold"	ZZ 93861 0
1-2	Cap for handle "AR" "Hot"	ZZ 93862 0
1-3	Screw M.4x40	ZZ 92679 0
1-4	Extension for headvalve "AA" - long	ZZ 92672 0
1-5	Escutcheon "AR"	ZZ 92598 0
1-6	Ring in brass 12x4,3x1	ZZ 92673 0
2	Installation set basin mixer	ZZ 93444 0
3	Tail piece-basin mixer right (mtd conn.)	ZZ 94249 0
3	Tail piece-basin mixer left (mtd conn.)	ZZ 94250 0
3-1	Ceramic headvalve 1/2" right 90°	ZZ 94251 0
3-1	Ceramic headvalve 1/2" left 90°	ZZ 94252 0
4	Gasket rubber 18,5x11x2	ZZ 92714 0
5	Spout bath mixer "AC" without diverter	ZZ 94349 0
5-1	Overflow with M.28x1 Cascade	ZZ 94254 0
5-2	Mousseur cartridge M.28x1 Cascade	ZZ 94255 0
5-3	Knob for bath spout	ZZ 94350 0
5-4	Screw Inox M6x8	ZZ 92668 0
5-5	Diverter's rod	ZZ 94257 0
5-6	Installation set for deck-mounted spout	ZZ 94258 0
5-7	Cross connection for bath mixer	ZZ 94259 0
5-8	Spout bath mixer "AC"	ZZ 94260 0
6	Flex 1/2" x 1/2" L.500	ZZ 93077 0
7	Gasket NBR 70SH. 32x28,2x1	ZZ 92696 0
8	Flex 3/8" x 3/8" L.500	ZZ 93078 0
9	Handshower for bath mixer "AR"	ZZ 93637 0
9-1	Spray-Kit handshower "AR"	ZZ 90544 0
9-2	Fixing screw for spray-kit handshower	ZZ 92640 0
9-3	Back-flow valve Ø 15	ZZ 92956 0
9-4	Gasket rubber 18,5x11x2	ZZ 92714 0
9-5	Connection for shower "AR"	ZZ 90337 0
10	Flex 175cm Ø 14 3/8" M.15x1	ZZ 92757 0
11	Escutcheon shower "AR"	ZZ 92599 0
12	Deck-mounted handshower support "AR"	ZZ 90104 0
13	Lever with escutcheon "AA" "Cold"	ZZ 94019 0
13	Lever with escutcheon "AA" "Hot"	ZZ 94020 0
13-1	Metal lever handle "Cold" mark - 3 hole lavatory	ZZ 92117 0
13-1	Metal lever handle "Hot" mark - 3 hole lavatory	ZZ 92118 0
14	Porcelain lever with escutcheon "AP" "Cold"	ZZ 93702 0
14	Porcelain lever with escutcheon "AP" "Hot"	ZZ 93703 0
14-1	Porcelain lever with "Cold" mark - 3 hole lavatory	ZZ 92262 0
14-1	Porcelain lever with "Hot" mark - 3 hole lavatory	ZZ 92263 0
15	Adaptor	ZZ 94518 0

## Installation Instructions

### INSTALLATION INSTRUCTIONS

#### PRELIMINARY INFORMATION

- We recommend the use of a professional plumber
- Flush the plumbing system before installation of the mixer. This will prevent residue from clogging the line and aerator. Especially important in new construction.
- Mixers of the ARCANA series are fit for operating with hot water collectors under pressure, instantaneous and gas water-heaters.
- We suggest an inspection panel be worked into the installation to inspect for leaks after installation.

#### TECHNICAL DATA

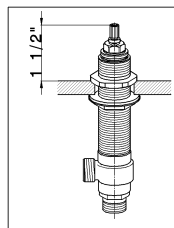
- Minimum dynamic pressure .....7,25 psi
- Maximum operational pressure (static).....145 psi
- Recommended operational pressure(static)..14,5-72,5 psi (N.B.: for pressures higher than 72,5 psi we suggest the installation of a pressure reducer)
- Maximum test pressure (static).....232 psi
- Maximum hot water temperature .....176°F
- Suggested hot water temperature .....140°F (for energy saving)
- Hot water connection ..... left
- Cold water connection ..... right

PRESSURE	FLOW RATE	
	SPOUT	SHOWER
7,25 psi	3,22gpm	1,42 gpm
14,50 psi	4,69gpm	2,16 gpm
29,00 psi	6,62gpm	3,22 gpm
43,50 psi	8,07gpm	4,03 gpm
58,00 psi	9,34gpm	4,83 gpm
72,50 psi	10,50 gpm	5,43 gpm

#### SPOUT INSTALLATION

**WARNING:** The deck must be flat and the rough (5) must not be recessed into the finished surface. If recessed, the spout will leak on the deck.

1. The rough and spout trim are separate: insert the rough (5) in the central hole of the tub (min.Ø 1"1/8). Place the gasket (5-10) between the rough and the tub.
2. Install the gasket (5-11), metal washer (5-12) and deck nut (5-13) on the rough.
3. Assemble the cross connection (5-7) to the stem and then screw the check nut (5-14); mount the gasket (5-15) and screw the nut (5-16).
4. Assemble the spout (5-8) on the stem; locking it with the locking screw (5-4)



#### HEADVALVE INSTALLATION

1. Screw a mounting nut (2-1) on the tail-piece (3-2) and mount first a gasket (2-2); then a seal (2-3)
2. Insert the tail piece into the side hole of the sink (min. Ø1 5/16"). Be sure that the adaptor (15) is assembled on the headvalve.

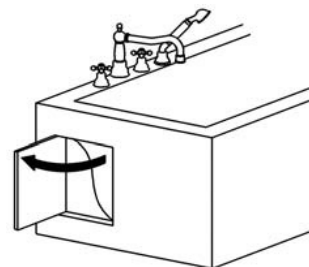
3. Assemble the O-Ring (2-4) and then screw down the nut (2-5).
4. The head valves height on the sink should 1 1/2"
5. Screw the flexible hose (9) to the cross connection and to the tail-piece, and insert the seals (8).
6. Screw down the joint (1-5) on the tail-piece.
7. Assemble on the rod (B) of the head valve (3-1) the extension (1-4) first; then the handle (1-7) (10-7) (11-7) on the extension and place the gasket (1-3) inside the handle.
8. Screw down the screw (1-3) and mount the cover cap (1-2)

#### SHOWER INSTALLATION

1. Screw a check nut (2-1) on the shower holder's stem (12) and assemble first a metal washer (2-2) and then a gasket (2-3).
2. Insert the shower holder's stem in the tub's hole (min. Ø1"1/8)
3. Assemble the other gasket (2-3), then the other metal washer (2-2) and at the end screw the other check nut (2-1).
4. Screw the bell escutcheon (11) on the shower holder's stem.
5. Insert the flexible hose (10) in the shower's holder and connect it to the flexible hose (8), assembling the gasket (10-2). Screw the flexible hose (10) to the shower (9); mounting the gasket (10-1).

#### REMARKS

For a correct maintenance of the faucets, we suggest to let an inspection's space open (see picture).



## Installation Instructions

### MAINTENANCE

The faucets is fitted with an aeration device in the Hot/Cold water outlet.

This may need occasional cleaning especially in hard water areas.

This is accomplished by unscrewing the outlet in a counter clockwise direction, dismantling and leaving the inner screen mesh

immersed over night in a solution of MasterLibby or a 50% / 50% solution of vinegar and water.

### WARRANTY INFORMATION

**INCLUDE Rohl CISAL Bath Collection has a limited lifetime warranty.**

“Warranty Exclusion: This warranty is for normal domestic use only and excludes defect or injury caused by or resulting from misuse, abuse, neglect, accidental damage or improper installation”. There is no warranty on the finish Tuscan Brass.

### FINISH CARE

1. WIPE DOWN AFTER USE TO AVOID SPOTTING
2. USE A SOFT BRUSH FOR DETAIL CLEANING
3. DO NOT USE SPRAY CLEANERS WITH AMMONIA, ALCOHOL OR BLEACH
4. DO NOT USE ABRASIVES LIKE COMET, AJAX OR BONAMI

<b>FINISH</b>	<b>CLEANING</b>	<b>CARE</b>
CHROME	50-50 VINEGAR AND WATER	FLITZ WAX. SIMICHROME OR GAGNON
INCA BRASS	50-50 VINEGAR AND WATER	<b>DO NOT USE FLITZ –</b> GAGNON OK –
POLISHED NICKEL	50-50 VINEGAR AND WATER	FLITZ WAX, SIMICHROME OR GAGNON
SATIN NICKEL	50-50 VINEGAR AND WATER	FLITZ WAX OR GAGNON
TUSCAN BRASS	PAT DRY AFTER USE	FLITZ WAX OR GAGNON

FOR WATER SPOTTING ON CHROME, POLISHED NICKEL OR SATIN NICKEL USE SIMICHROME PASTE.



Rubinerteria CISAL S.p.A.

28010 Pella frazione Alzo (Novara) – ITALY – Via P.Durio, 160

Telefono 0322/918111 – Telefax 0322/969518 –

E-mail: [cisal@cisal.it](mailto:cisal@cisal.it) - [www.cisal.it](http://www.cisal.it)

# ROHL

Authentic Luxury for Kitchen and Bath™

ROHL LLC

3 PARKER

IRVINE, CA 92618-1605 USA

TEL: 714-557-1933 FAX: 714-557-8635

[www.rohlhome.com](http://www.rohlhome.com)