

Central Brass®

The Easy Choice

2950 East 55th St. Cleveland, Ohio 44127
Phone: (216) 883-0220 Fax: (216) 883-0875
www.CentralBrass.com

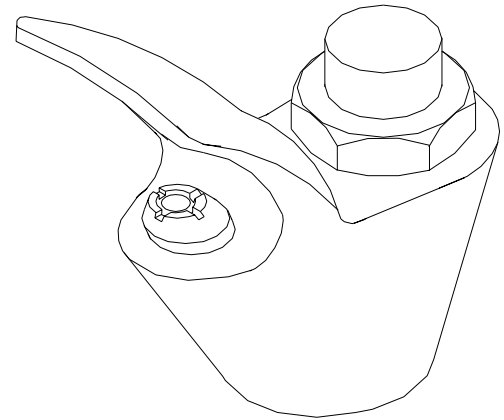
MODEL NO. 0362
BUBBLER HEAD

The bubbler head is made from a brass forging. It is polished and copper, nickel and chrome plated. The push button control is provided with a replaceable cartridge. The flow rate through the bubbler is internally adjustable. The bubbler head is mounted with 3/8-18 NPS female pipe thread.

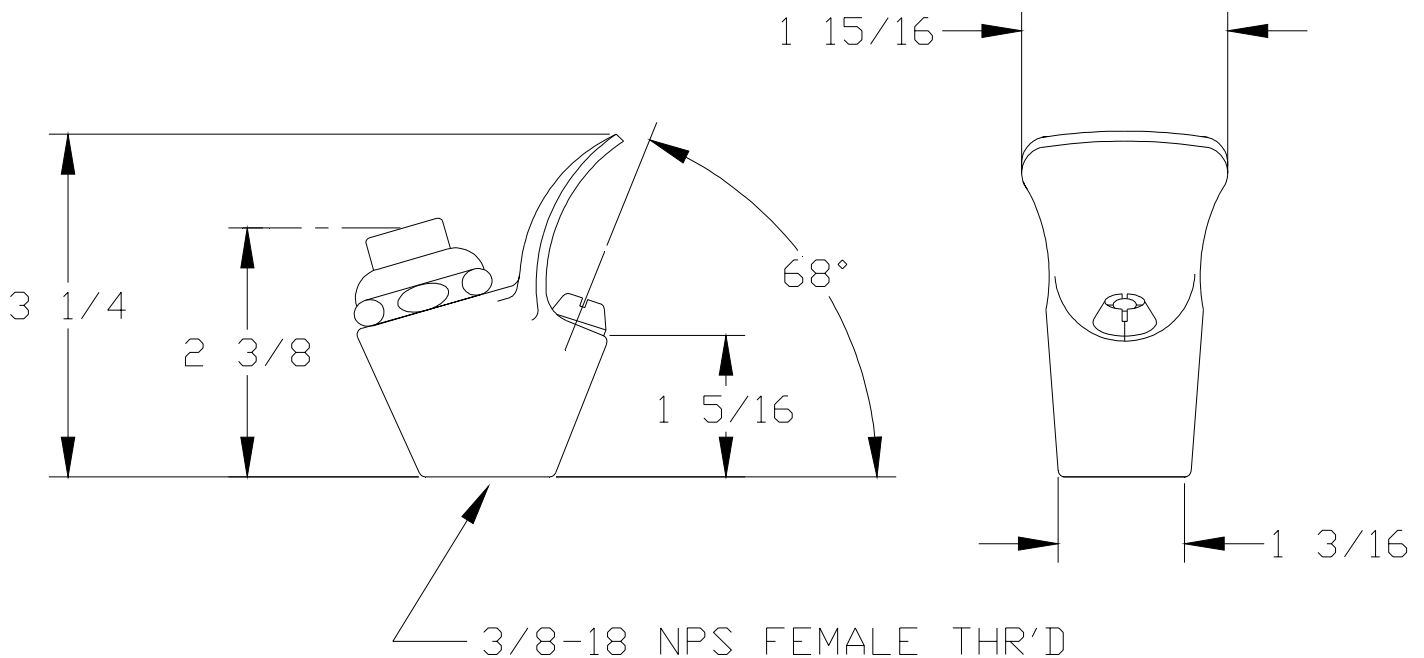
ANSI/NSF 61/Section 9 Certified
ASME A112.18.1M



Certified to
ANSI/NSF 61/Section 9



Installation Drawing



Central Brass®

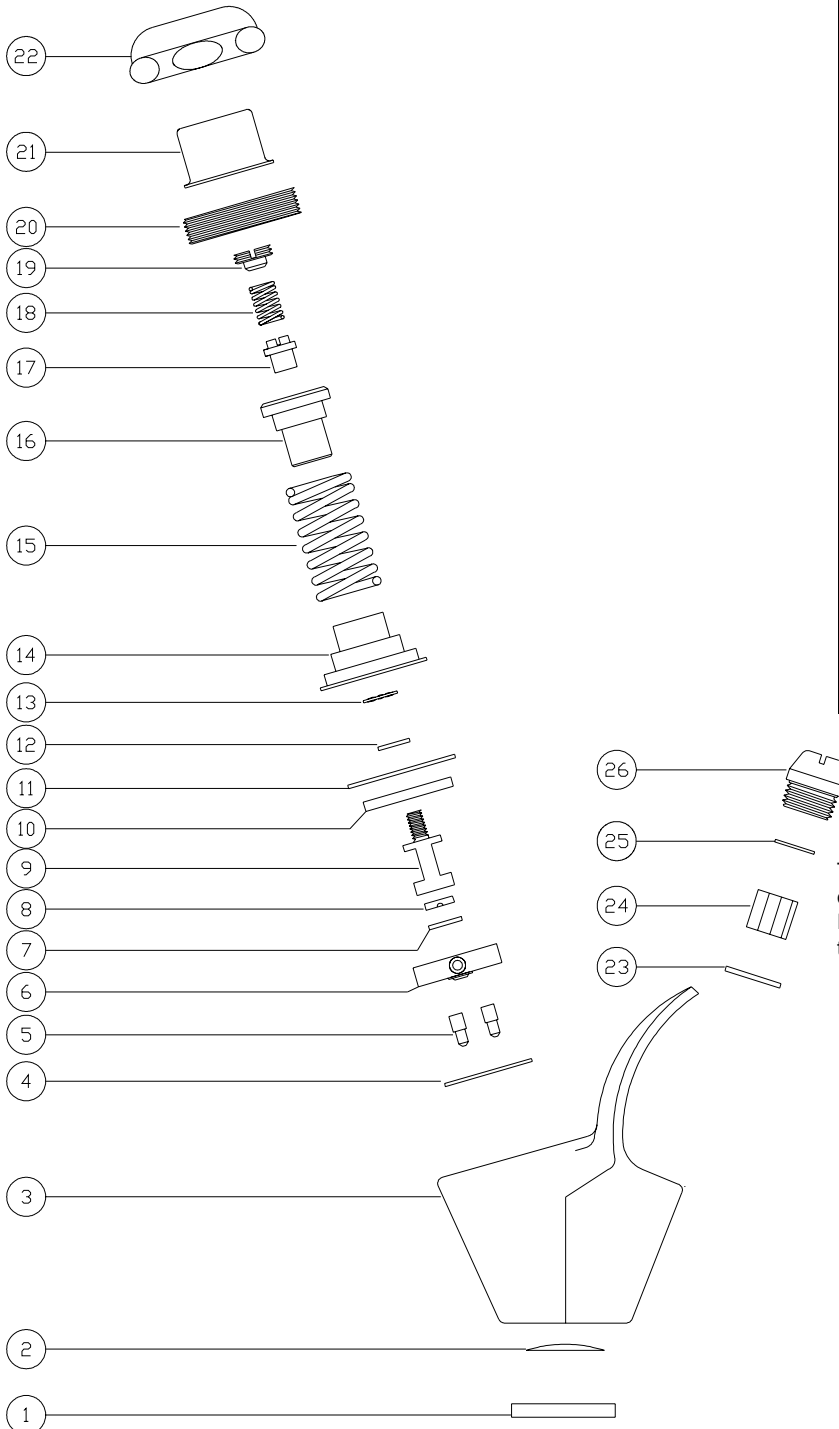
The Easy Choice

2950 East 55th St. Cleveland, Ohio 44127
 Phone: (216) 883-0220 Fax: (216) 883-0875
 www.CentralBrass.com

MODEL NO. 0362
BUBBLER HEAD

Parts Breakdown

#	Part#	Description
1	940	Washer
2	358-V	Monel Screen
3	PF-6919	Brass Bubbler Body
4	358-APGCN	Rubber Gasket
5	358-LPC	Brass Locating Pin
6	358-AP	Celcon Tee & Plug
7	358-F	Brass Plug
8	358-EC	Seat Washer
9	358-DC	Brass Seat Holder
10	358-WC	Brass Washer
11	358-GCN	Diaphragm
12	1043-E	Brass Washer
13	358-JC	Bronze Lockwasher
14	358-KC	Brass Bushing
15	358-LS	Stainless Steel Spring
16	358-M	Brass Bushing
17	358-NC	Brass Locknut
18	358-O	Stainless Steel Spring
19	358-P	Brass Regulator Screw
20	358-BHC	Brass Bushing Holder
21	PF-358-Q	Brass Cap
22	PF-358-RS	Brass Cap Nut
23	358-U	Fiber Washer
24	PF-358-TA	Brass Streamformer
25	358-VA	Stainless Steel Screen
26	PF-358-SA	Brass Jet



The parts listed in the parts breakdown above may not be offered separately as replacement parts. Please review the Replacement Parts page for the authorized replacement parts that are available for this item.