

**Wicker Park™ One-Piece Skirted Concealed Trapway
1.28 gpf (4.8 Lpf)
ErgoHeight™ ADA Elongated Toilet**

Features:
G0021221

- Vitreous China
- 12" Rough-In
- 3" flush valve for maximum water force
- Fluidmaster® 400A Fill Valve
- Corrosion resistant flapper
- Extra-Large Dual fed siphon jets for high power bowl clearing
- 100% glazed, 2" large trapway for clog-free waste removal
- Chrome metal tank lever with solid durable brass arm
- G0099859 Soft-Closed Toilet seat included
- G0099857 Plastic Side Cover included

Technical Information:

Configuration	One-Piece Concealed Trapway ADA ErgoHeight™ Elongated Toilet
Water per Flush	1.28 gpf (4.8 Lpf)
Rough-In	12"
Height	29 5/8"
Width	14 3/8"
Depth	28 3/8"
Trapway	2"
Large Water Surface	8 11/16" x 6 5/16"
Shipping weight	106 lbs

Accessories:

N/A

Other Tank Options: (To be purchased separately)

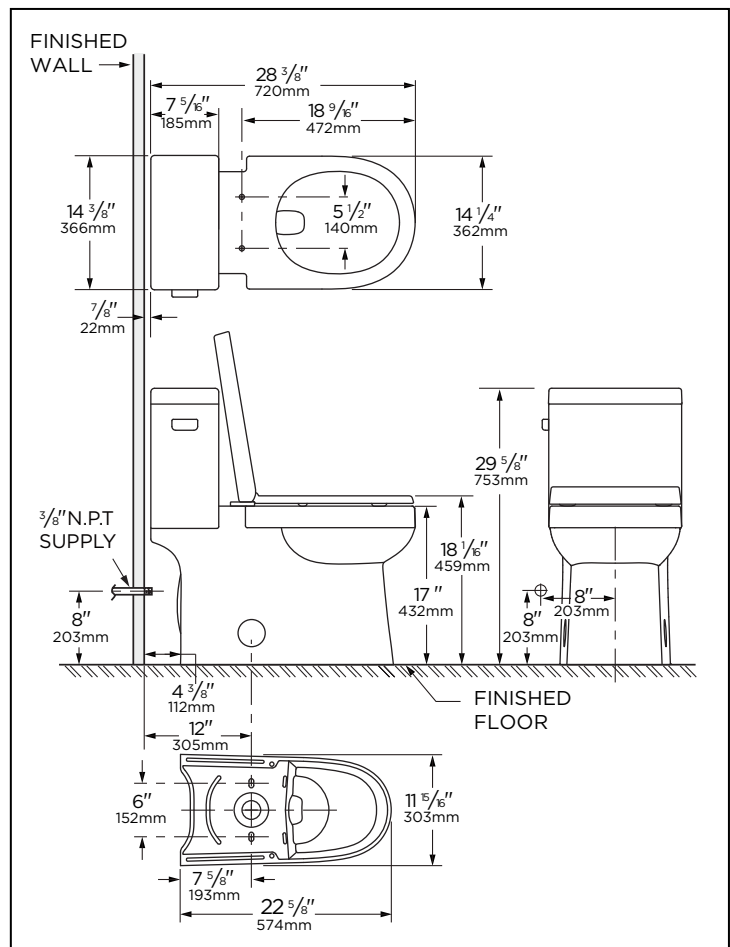
N/A

Available Colors:

- White
- Other: Refer to Price Book for additional colors/finishes

Warranty:

- Limited Lifetime on Vitreous China, refer to the website for more details.



HIGH EFFICIENCY TOILET

HET



NOTES: All dimensions are in inches and millimeters. Illustrations may not be drawn to scale.

IMPORTANT:

IMPORTANT:
Dimensions of fixtures are nominal and may vary within the range of tolerances established by ASME standard A 112.19.2
THIS FIXTURE QUALIFIES ACCORDING TO ASME TEST PROCEDURES AS A HIGH EFFICIENCY WATER CLOSET WITH
AN AVERAGE CONSUMPTION OF 1.28 gpf (4.8 Lpf) OR LESS.