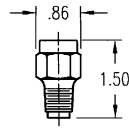
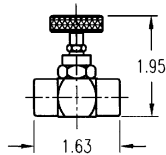


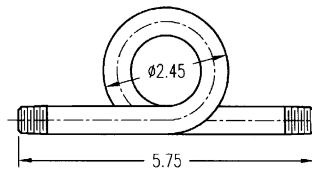
PSN-B-50



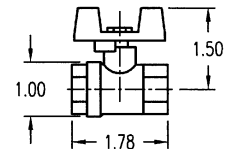
PSN-B-25



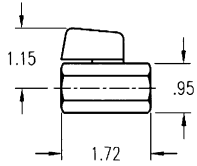
**25NVBR
25NVSS**



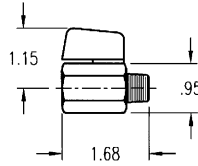
**SY-14B
SY-14S**



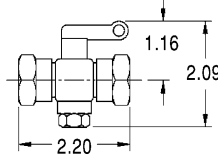
BTC-14



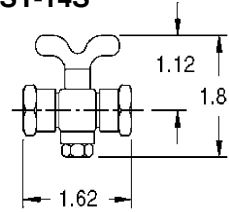
**BV25
BV50**



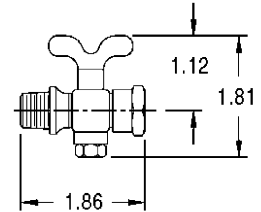
MBV25



LC-14



TC-14



MTC-14

inch (mm) dimensions

Quantity	PRESSURE SNUBBERS			
	CAT. NO.	SIZE	MATERIAL	RATING
	PSN-B-25	1/4" NPTM x 1/4" NPTF	Brass	1,500psi at 70°F
	PSN-B-50	1/2" NPTM x 1/2" NPTF	Brass	1,500psi at 70°F
	NEEDLE VALVES			
	CAT. NO.	SIZE	MATERIAL	RATING
	25NVBR	1/4" NPTF x 1/4" NPTF	Brass	600 psi & 300°F
	25NVSS	1/4" NPTF x 1/4" NPTF	304 SS	4000 psi & 150°F
	SYPHONS			
	CAT. NO.	SIZE	MATERIAL	RATING
	SY-14S	1/4" NPTM x 1/4" NPTM	Iron	300 psi & 300°F
	SY-14B	1/4" NPTM x 1/4" NPTM	Brass	400 psi & 300°F
	FORGED BRASS COCKS			
	CAT. NO.	SIZE	MATERIAL	RATING
	BTC-14	1/4" NPTF x 1/4" NPTF	Brass	200 psi Hydraulic
	GAUGE COCKS			
	CAT. NO.	SIZE	MATERIAL	RATING
	TC-14	1/4" NPTF x 1/4" NPTF	Brass	200 psi Hydraulic
	LC-12	1/2" NPTF x 1/2" NPTF	Brass	200 psi Hydraulic
	LC-14	1/4" NPTF x 1/4" NPTF	Brass	200 psi Hydraulic
	MTC-14	1/4" NPTF x 1/4" NPTF	Brass	200 psi Hydraulic
	BALL VALVES			
	CAT. NO.	SIZE	MATERIAL	RATING
	BV25	1/4" FNPT x 1/4" FNPT	Chrome Plated Brass	450 psi & 250°F
	MBV25	1/4" FNPT x 1/4" MNPT	Chrome Plated Brass	450 psi & 250°F
	BV50	1/2" FNPT x 1/2" FNPT	Chrome Plated Brass	450 psi & 250°F

CUSTOMER _____
 PROJECT _____
 ENGINEER _____
 PRO or P.O. NO. _____



WEISS INSTRUMENTS, INC.
 HOLTSVILLE, NEW YORK 11742

DESCRIPTION:
GAUGE ACCESSORIES

DRAWN BY: _____ DATE: _____ DRAWING: _____