

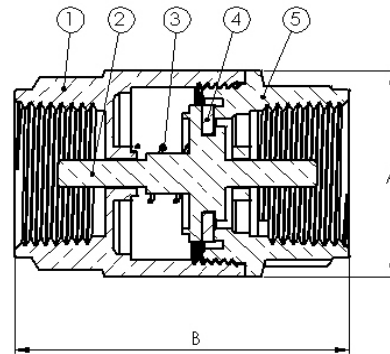
1074W Series

Forged DZR Brass In-Line Spring Check Valve
 Stainless Steel Spring
 Soft Seat (FKM)

Certifications

Certified to NSF/ANSI 61 & 372
 Lead Free

NO.	DESCRIPTION	MATERIAL
1	Body	Brass
2	Stem	Brass
3	Spring	Stainless Steel
4	Gasket	FKM
5	End Cap	Brass



Designed for residential, commercial or industrial use with water, oil or gas. Threaded ends comply with ANSI B1.20.1. Solder joint temperature ratings are per ASME B16.18 Annex A for 95-5 solder. Other solder materials have lower pressure/temperature limits. Do not silver braze or overheat valves when soldering.

ITEM#	Connection Type	SIZE (In)	Pressure Rating	Max Temp	A	B	Cv	Cracking Pressure
H-10741W	FIP	3/8	200 CWP	250 F	1.24	1.90	2.40	1.45 PSI
H-10742W	FIP	1/2	200 CWP	250 F	1.24	2.21	3.78	1.00 PSI
H-10743W	FIP	3/4	200 CWP	250 F	1.48	2.31	6.65	0.75 PSI
H-10744W	FIP	1	200 CWP	250 F	1.79	2.75	9.20	0.50 PSI
H-10745W	FIP	1 1/4	200 CWP	250 F	2.31	3.00	14.90	0.40 PSI
H-10746W	FIP	1 1/2	200 CWP	250 F	2.51	3.02	20.90	0.30 PSI
H-10747W	FIP	2	200 CWP	250 F	3.15	3.33	34.50	0.15 PSI
H-10751W	SWT	3/8	200 CWP	250 F	1.24	1.64	2.00	1.50 PSI
H-10752W	SWT	1/2	200 CWP	250 F	1.24	1.87	2.80	1.00 PSI
H-10753W	SWT	3/4	200 CWP	250 F	1.48	2.44	5.70	0.75 PSI
H-10754W	SWT	1	200 CWP	250 F	1.79	2.93	8.70	0.50 PSI
H-10755W	SWT	1 1/4	200 CWP	250 F	2.31	3.28	14.70	0.40 PSI
H-10756W	SWT	1 1/2	200 CWP	250 F	2.51	3.58	20.50	0.30 PSI
H-10757W	SWT	2	200 CWP	250 F	3.15	4.33	34.40	0.15 PSI

