

Features

- Heavy Duty SMC Sheet Molding Compound Material
- Light weight. Natural stone effect.
- 63" length bases meet ADA requirements
- Bases can be custom sized within a range. See chart below for range sizing.
- SMC color-matched drain cover conceals a conventional 2" shower drain (not supplied).
- Stock bases can be used as a Single, Double or Triple Threshold
- Ultra low 1" threshold front curb for easy access. After underlay ment and finished floor virtually a flush entrance to the shower.
- Slip-resistant lightly textured slate floor maintains an easy to clean surface
- 10 Year Limited Residential/ 3 Year Commercial Warranty

Stock Sized Specified Models

	Model No.	Length A	Width B	Height
<input type="checkbox"/>	SMFZS6032R/L	60"	31.5"	1.0"
<input type="checkbox"/>	SMFZS6036R/L	60"	35.5"	1.0"
<input type="checkbox"/>	SMFZS6040R/L	60"	39.4"	1.0"
<input type="checkbox"/>	SMFZS6332R/L*	63"	31.5"	1.0"
<input type="checkbox"/>	SMFZS6336R/L*	63"	35.5"	1.0"
<input type="checkbox"/>	SMFZS6340R/L*	63"	39.4"	1.0"
<input type="checkbox"/>	SMFZS6736R/L*	67"	35.5"	1.0"
<input type="checkbox"/>	SMFZS7236R/L*	72"	35.5"	1.0"

* Meets ADA requirements.

Custom Sized Models (Specify Lgth,Depth, RH or LH) can only be used as a Single or Double Threshold

	Model No.	Max Lgth A	Min Lgth B	Max Depth A	Min Depth B
<input type="checkbox"/>	SMCFZS6032R/L	60"	56"	31.5"	29.5"
<input type="checkbox"/>	SMCFZS6036R/L	60"	56"	35.5"	33.5"
<input type="checkbox"/>	SMCFZS6040R/L	60"	56"	39.4"	37.4"
<input type="checkbox"/>	SMCFZS6332R/L	63"	59"	31.5"	29.5"
<input type="checkbox"/>	SMCFZS6336R/L	63"	59"	35.5"	33.5"
<input type="checkbox"/>	SMCFZS6340R/L	63"	59"	39.4"	37.4"
<input type="checkbox"/>	SMCFZS6736R/L	67"	63"	35.5"	33.5"
<input type="checkbox"/>	SMCFZS7236R/L	72"	68"	35.5"	33.5"

To Be Specified: Color

<input type="checkbox"/>	31 White
<input type="checkbox"/>	32 Cameo
<input type="checkbox"/>	39 Grey
<input type="checkbox"/>	09 Black



Cameo 32 Black 09

Codes/Standards

The specified model meets or exceeds the following:

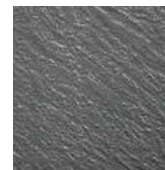
ASTM E662

CSA B45.5/IAPMO Z124

Notes: Install this product according to the installation instructions.



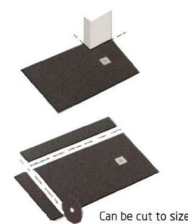
Modern Slip Resistance with a stone look texture. Easy to clean as well as slip resistant.



CUSTOMIZABLE BASE

Note: Bases can be built to accommodate unique sizes. Notches can also be cut from the bases to allow for columns in a corner

Base can be built to custom sizes within certain limitations. Can be trimmed up to 4" in width from side opposite drain or up to 2" from depth. Base is designed to be used as a single, double or triple threshold in stock sizes and single threshold models in custom sizes



Can be cut to size

