



**MODEL:**  SCWT4A-Q  SCWT8A-Q  
 SCWT14A-Q  SCWT-L/R (Less Refrigeration)



These water coolers are certified to NSF/ANSI 61.

**REFRIGERATION SYSTEM**

Hermetically sealed, positive start compressor with lifetime lubrication and built-in overload protection, efficient capillary sizing, large capacity dryer-strainer, and self-lubricated fan cools copper/aluminum condenser. System uses R134A refrigerant. Protected by Halsey Taylor's Limited 5 Year Warranty.

**VENTILATION**

Insure proper ventilation by maintaining 6" (152mm) clearance from cabinet louvers to wall.

**SUGGESTED SPECIFICATIONS**

Shall deliver ( ) GPH of 50° F water at 90° F ambient and 80° F inlet water. Shall have stainless steel basin with removable drain strainer. Bubbler shall be two-stream, mound-building type. Separate valve and automatic stream regulator shall be mounted within cabinet. Refrigeration system shall employ high efficiency, positive start compressor using R134A, non-pressurized tank with totally encapsulated insulation and be controlled by positive sensing thermostat. The manufacturer shall certify the unit to meet the requirements of NSF/ANSI 61, and the Safe Drinking Water Act. Unit complies with ARI Standard 1010.

NOTE: Continued product improvement makes specifications subject to change without notice. See Halsey Taylor website for most current spec sheet.

**GENERAL**

Self-contained, electric refrigerated, free-standing water cooler designed to be easily accessible to able-bodied individuals. Unit is certified to NSF/ANSI 61 and meets requirements of the Safe Drinking Water Act. Unit provides 50° F water at 80° F inlet water and 90° F ambient.

**CABINET**

Heavy-gauge vinyl clad steel. Resistant to wear, moisture, perspiration, heat, and sunlight. Optional Stainless Steel is available.

**COOLER TOP**

Non-corrosive stainless steel cooler top, number 300 series with satin finish resists stains and corrosion and is easy to maintain. Anti-splash ridge reduces splatter. Contoured to insure proper drainage.

**BUBBLER**

Exclusive one-piece, chrome-plated two-stream mound-building bubbler with non-removable anti-squirt feature and integral hood insures a satisfying drink of water.

**PUSHBUTTON ACTUATION MECHANISM**

Self-closing, vandal-resistant pushbutton does not require grasping or twisting.

**AUTOMATIC STREAM HEIGHT REGULATOR**

Self-closing assembly is located inside unit to prevent tampering. Unit resists corrosion and liming. A constant stream height is automatically maintained under line pressures that vary from 20 to 105 psi.

**INLET STRAINER**

Easily cleaned in-line strainer screen traps particles of 140 microns or larger before they enter the waterway.

**TEMPERATURE CONTROL**

Positive sensing thermostat for controlling temperature of storage tank water. Factory set at 50° F Adjustable ±5° F.

**STORAGE TANK**

Non-pressurized stainless steel evaporator/storage tank for long life. Waterways are certified to NSF/ANSI 61, far exceeding the requirements of the Safe Drinking Water Act.

**Free-Standing Cooler**



Standard finish is Platinum Vinyl

**Optional Finishes (no extra cost)**

- Slate
- Almond

**Optional Finishes (extra cost)**

- All Stainless Steel

**Optional Accessories (extra cost)**

- Glass Filler Kit
- Sump Pump Kit
- Back Panel 27082C
- Water Filter
- Vandal-Resistant Kit
- Foot Pedal Kit
- Easy Flex™ Bubbler
- Coffee Server (factory installed for SCWT8A-Q & SCWT14A-Q only)

Trap and service stop not included.

JOB NAME: \_\_\_\_\_  
\_\_\_\_\_  
\_\_\_\_\_  
ENGINEER/CONTRACTOR NAME: \_\_\_\_\_  
\_\_\_\_\_  
APPROVAL: \_\_\_\_\_  
DATE: \_\_\_\_\_

**SCWT SERIES**

Model No.	GPH Capacity Cooled to 50° F*				Base Rate Cap.	F.L. Amps	Shipping Weight lb.	Rated Watt Usage
	Ambient Air Temp							
	70°F	80°F	90°F†	100°F				
SCWT4A-Q	4.8	4.4	4.0	3.6	4.0	2.5	72	230
SCWT8A-Q	9.2	8.4	7.6	6.8	7.6	4.0	73	370
SCWT14A-Q	16.3	14.9	13.5	12.2	13.5	7.2	76	690

\* With projector service and tap water at 80° F.

† UL listed and complies with ARI Standard 1010



**SCWT4A-Q, SCWT8A-Q,  
SCWT14A-Q, SCWT-L/R**

**Deluxe Free-Standing  
Cooler**

(CONTINUED)

**ROUGH-IN, MOUNTING, AND  
ELECTRICAL INSTRUCTIONS**

This cooler may be installed against the wall or freestanding from the wall.

**NOTE:** With slight modifications, rough-in heights from 16.5" and 24.3" can be accommodated. 2" maximum may be cut from the tailpiece provided.

**For against-the-wall installation**

Provide 2" x 4" wood blocking back of finished wall for securing cooler flush with finished wall. (Refer to rough-in drawing.) Install 1 1/4" trap 5 1/4" from wall face to center of trap inlet. Trap not furnished. Install 3/8" IPS service stop to building supply line. Service stop not furnished.

Trap and service stop not included.

**OPERATING PRESSURES**

Supply water-105 psi maximum

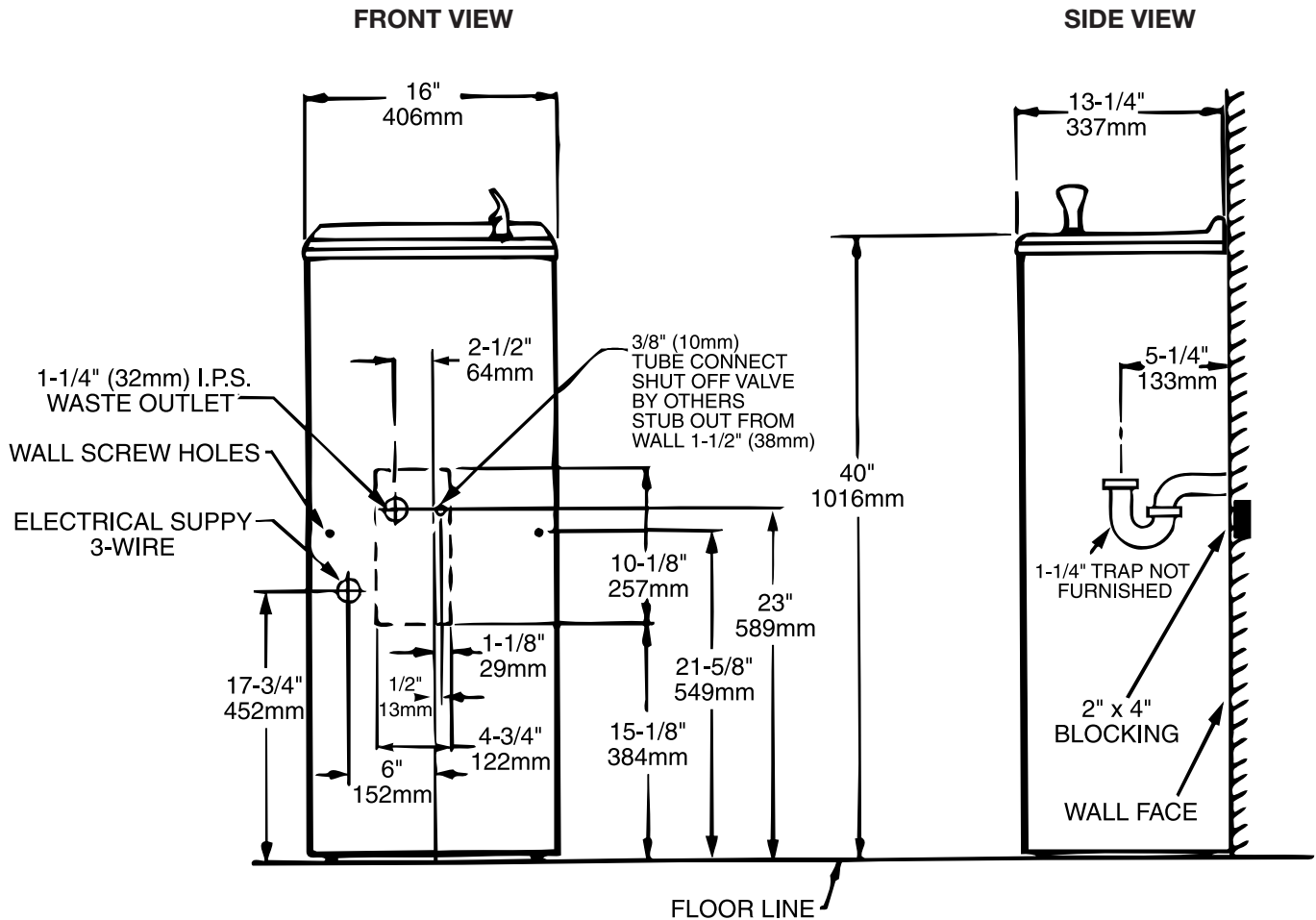
**ELECTRICAL**

Electrical receptacle to be installed to receive 3-wire parallel blade grounding type male plug. Note cord length is 4 feet from cord exit point in cooler. Cooler can now be mounted against the wall and secured to blocking with two wood screws. Be sure 1 1/4" O.D. slip connection tube from cooler waste to trap is in line. Connect water supply line to 3/8" tubing inlet connection located inside of cabinet below shelf.

**For freestanding installation**

A hole is provided in back of cabinet for plumbing entrance. See rough-in drawing and outline drawing. Install 1 1/4" IPS trap inside cabinet. Trap not furnished. Install 3/8" IPS service stop to building supply line outside of cooler cabinet. Service stop not furnished. Connect water supply from building to 3/8" tubing inlet connection located inside of cabinet below shelf.

**NOTE:** Installation outdoors in an unprotected environment is not recommended.



NOTE: Minimum wall clearance for air flow is 4 inches (102mm) on either side.

NOTE: A service supply stop must be installed at the cooler inlet line.

*Halsey Taylor*®