

APPLICATIONS

- Designed for automatic collection and removal of condensate from air conditioning, refrigeration and dehumidification equipment when gravity drainage is not possible or practical. Also suitable for high efficiency oil and gas-fired condensing furnace and condensing boiler equipment.

FEATURES

- Fully automatic, easy installation
- Head capacity: 20'
- Safety switch
- Automatic start and stop operation
- Stainless steel motor shaft
- Rated for water temperature up to 140°F(60°C)
- Reversible tank cover with 3 inlet drain holes
- 6ft power cord with grounded 3-pronged plug
- Thermal overload protection
- 20' x 3/8" ID vinyl discharge tubing
- Color: white/black
- UL listed



SPECIFICATIONS

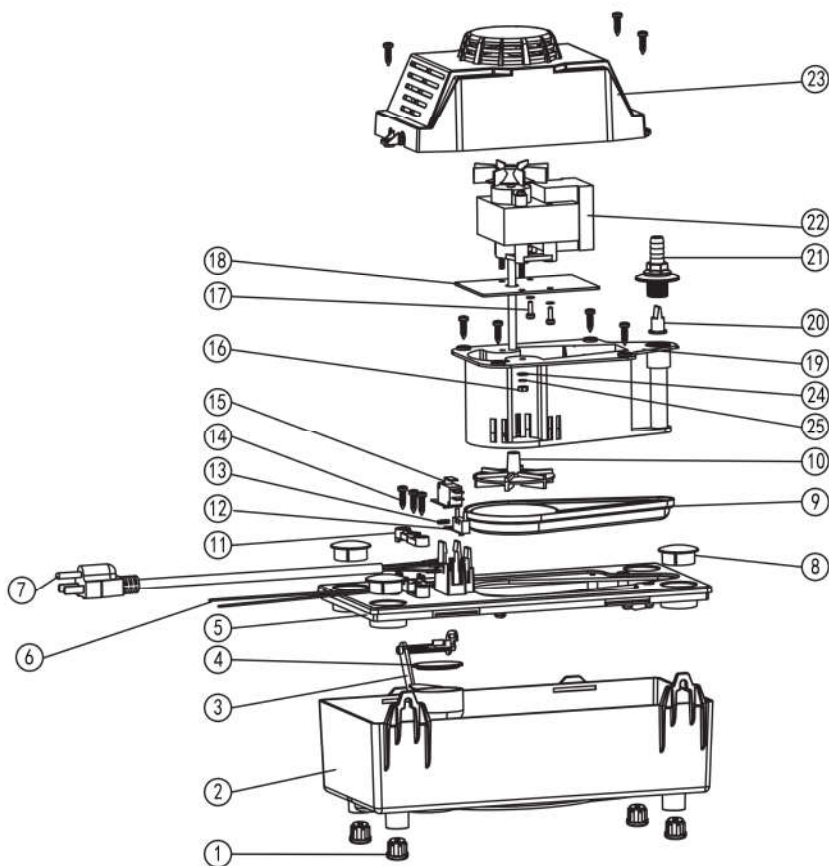
- Motor: 1/30 HP
- Discharge: 3/8" OD barbed
- Housing/tank cover: ABS
- Motor cover: ABS
- Volute: ABS
- Tanks: ABS
- Impeller: Glass-filled polypropylene

MODELS

Model #	HP	Volts	Hertz	Performance GPH @ Head					Shutoff	Tubing
				1'	5'	10'	15'	20'		
4PRO20CPWSWT	1/30	115V	60Hz	80	70	50	22	0	20'	20'

Note: GPH is through check valve

ENGINEERING DATA



ITEM	DESCRIPTION	4PRO20CPWSWT 115V 60Hz 20 feet
1	Black rubber pads, Silicone	4
2	Tank, Red, ABS	1
3	Float, White , ABS	1
4	Float cap, White , ABS	1
5	Tank, Black, ABS	1
6	Wiring harness for safty switch	1
7	Power plug	1
8	Drain hole plug, Black , ABS	3
9	Impeller Cover , Black , ABS	1
10	Impeller , White , ABS+PC	1
11	Pressing block for wire , Black , ABS	1
12	Pump Switch , MS3-D IA-T050	1
13	Switch shaft , Stainless steel	1
14	Screw , Zinc plating	10
15	Nut , M4. 0	2
16	Screw , Stainless steel	2
17	Support sheet for Motor , SGCC Zinc plate	1
18	Motor cover damper, Black, ABS	1
19	Check valve , Black , Silicone	1
20	Discharge , Black , ABS	1
21	Motor , 115V 60Hz 20feet	1
22	Motor cover, Black, ABS	1
23	Shim , Stainless steel	2
24	Spring washer , Zinc plating	4
25	20' Tubing	1

Job Name	
Date	
Model Specified	
Quantity	
Customer	
Contractor	
Architect/engineer	