

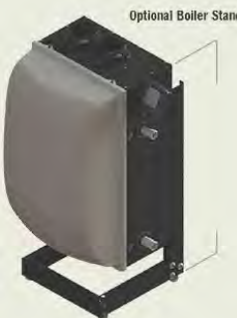
BOILER MODEL	INPUT MBH	D.O.E. HEATING CAPACITY	Net I=B=R WATER RATINGS MBH	DOE SEASONAL A.F.U.E. %	VENT DIAMETER INCHES	SHP WGT	PART NUMBER
ECO-70	70	65	57	95.2	2"/3"	117	383-800-000
ECO-110	110	101	88	95.0	2"/3"	117	383-800-001
ECO-155	155	143	124	95.1	3	130	383-800-002

Standard Equipment

- BOILER**
- Stainless Steel Heat Exchanger
 - 30 PSI ASME Relief Valve
 - Drain Valve
 - Stainless Steel Burner
 - Direct Spark Ignition
 - Variable Speed Blower Assembly
 - Venturi Mixing System with Air Silencer
 - Negative Pressure Regulated Gas Valve
 - 50 VA Transformer
 - Dual Scale Temp. & Pressure Gauge
 - Outlet Water Temp. Sensor
 - Inlet Water Temp. Sensor
 - Flue Gas Temp. Sensor
 - Outdoor Temp. Sensor
 - Sentinel X100 Inhibitor and Test Kit

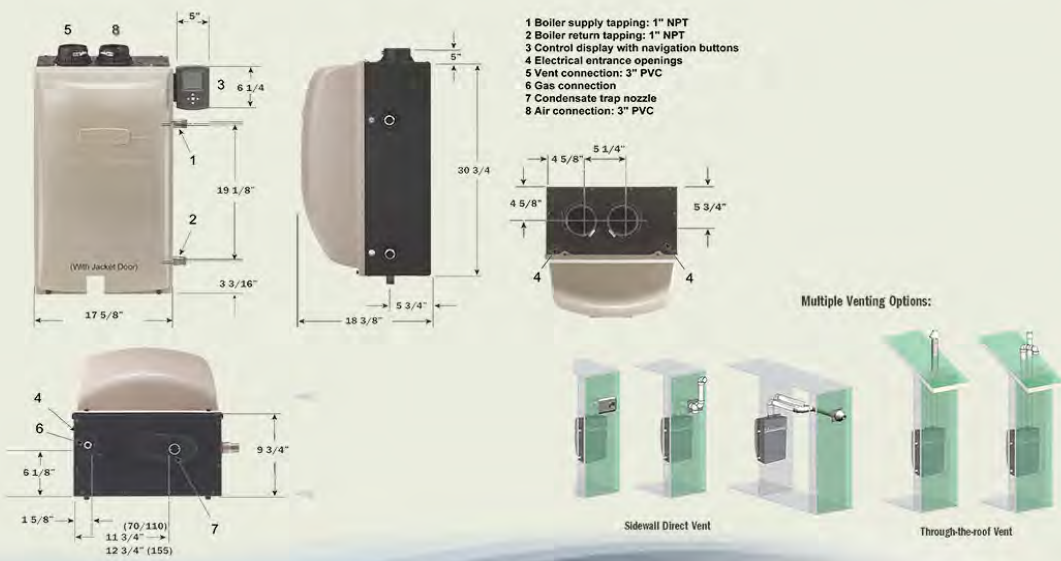
ADDITIONAL BOILER EQUIPMENT

ECO BOILER KITS	PART NUMBER
Composite Circulator UPS15-58RU 3 Speed, 115 Volt	111-GRF-001
1/2" Sweat Fitting for RU Circulator with Check Valve	111-GRF-002
3/4" Sweat Fitting for RU Circulator with Check Valve	111-GRF-003
Concentric Vent Kit PVC 2"	383-700-167
Concentric Vent Kit PVC 3"	383-500-350
L.W.C.O. Kit. 24 Volt Quick Connect	511-100-005
Condensate Neutralizer Kit	383-500-631
Sidewall Vent/Term. PVC	383-500-397
Sidewall Vent/Term. AL294C	382-200-430
Maintenance Kit ECO 70/110	383-700-165
Maintenance Kit ECO 155	383-700-200
ECO Boiler Stand Kit	383-800-101
Additional Extended Warranty: -31st Day to 5th Year Labor -2nd Year to 5th Year Parts. Contact Customer Service for Details or Visit www.weil-mclain.ca	111-WAR-000



- CONTROL MODULE**
- 3.5" LCD Display
 - Central Heat Circulator Control
 - DHW Circulator Control w/ Priority
 - Ignition Control
 - High Limit & Modulating Temp. Control
 - Outdoor Reset
 - Freeze Protection
 - Circulator Exercising

- COMPLETE JACKET ASSEMBLY WITH**
- Fully Removable Jacket Front Door
 - Mounting Bracket
 - Condensate Trap
 - Propane Conversion Orifice



In the interest of continual improvements in product and performance, Weil-McLain reserves the right to change specifications without notice.

WM97+^{CT}

Wall Mount Gas Boiler



BOILER NUMBER (1)	C.S.A. INPUT B.T.U./HR	DOE HEATING CAPACITY B.T.U./HR	DOE A.F.U.E. %	VENT SIZE	MINIMUM BOILER LOOP PIPE SIZE	SHP WGT	PART NUMBER
WM97+ 70 CT	70,000	65,000	97.3%	2 2/3"	1"	136	383-700-003
WM97+ 110 CT	110,000	101,000	97.0%	2 2/3"	1"	136	383-700-004
WM97+ 155 CT	155,000	143,000	97.2%	3"	1 1/4"	162	383-700-005

(1) For elevations between 2,000 and 4,500 ft. above sea level, rating should be reduced by 10%.

Meets Energy Star Guidelines

ADDITIONAL BOILER EQUIPMENT

WM97+ KITS	PART NUMBER
Concentric Vent Kit PVC 2"	383-700-167
Concentric Vent Kit PVC 3"	383-500-350
Condensate Neutralizer Kit	383-500-631
Maintenance Kit 70/110	383-700-165
Maintenance Kit 155	383-700-200
Aqua Logic Companion Water Heater	633-800-513
Adjustable Floor Stand	383-800-102
Additional Extended Warranty: -31st Day to 5th Year Labor -3rd Year to 5th Year Parts. Contact Customer Service for Details or Visit www.weil-mclain.ca	111-WAR-001



Aqua Logic Companion Water Heater

Standard Equipment

- 30 PSI ASME Relief Valve
- Drain Valve
- Stainless Steel Burner
- Outlet Water Temp Sensor
- Inlet Water Temp Sensor
- Flue Gas Temp Sensor
- Outdoor Temp Sensor
- Built in Primary/Secondary Piping Option
- Built in Expansion Tank
- Indirect-Fired Water Heater Connections
- Low Water Cutoff with Manual Reset and Test Button
- Inhibitor

Control Module

- 3.5" LCD Display
- Three Zone Circulator Control with Optional Domestic Hot Water Priority
- Alarm Control Functionality
- Outdoor Reset

Internal Boiler Circulator *

- 007 TACO with 1" Flanges (70)
- 0015 TACO with 1" Flanges (110)
- 0015 TACO with 1" Rotated Flanges (155)

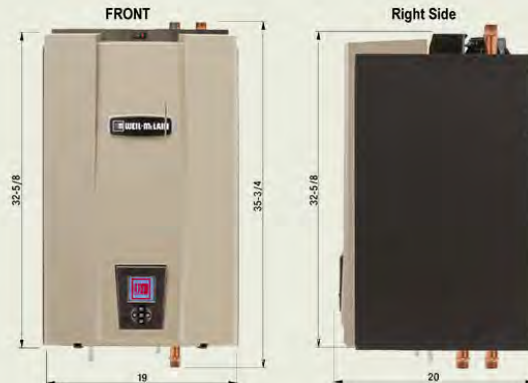
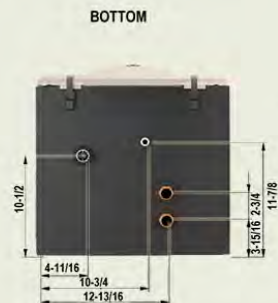
- Mounting Bracket
- Sidewall Vent/Air Termination Kit**
- On/Off Power Switch
- Condensate Trap
- Propane Conversion Orifice

*Circulator supplied with boiler cannot be removed and cannot be used as a zone circulator in multiple zone systems.

**Includes inside and outside plates, vent cap and hardware.



Dimensions Noted are for the WM97+ 70 & 110 Only.



Installation Flexibility with Multiple Venting Options



In the interest of continual improvements in product and performance, Weil-McLain reserves the right to change specifications without notice.

FOR OTHER ADDITIONAL BOILER EQUIPMENT AND CONTROLS - SEE SECTION 5