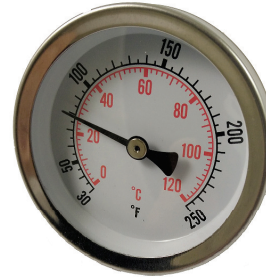


## APPLICATION

- Copper thermometer are designed for light industry, HVAC use.

## SPECIFICATION

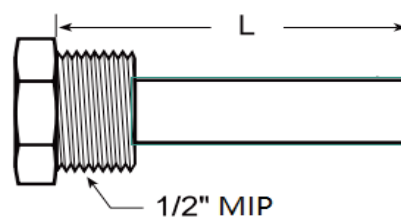
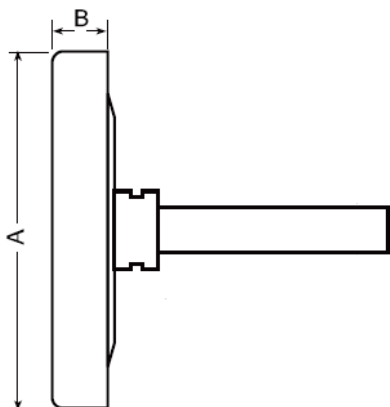
- Case: Zinc plated steel
- Ring: Stainless steel
- Plate: Glass
- Thermowell: Lead free brass
- Range: 30-250°F (0-120°C)
- Accuracy:  $\pm 3\%$  of full scale



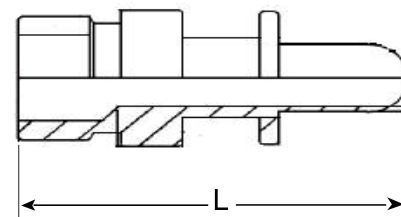
4PRO34CTWW

4PRO12MPTTWW

| Product      | A   |     | B   |     | L   |     | Connection |
|--------------|-----|-----|-----|-----|-----|-----|------------|
|              | In. | mm. | In. | mm. | In. | mm. |            |
| 4PRO12MPTTWW | 2.4 | 60  | 0.4 | 10  | 2   | 50  | 1/2" MIP   |
| 4PRO34CTWW   | 2.4 | 60  | 0.4 | 10  | 2   | 50  | 3/4" SWT   |



4PRO12MPTTWW



4PRO34CTWW