



# Kresla®

## 60" bathroom vanity cabinet with sinks and quartz top

### K-40641-BD1

#### Features

- Set includes cabinet, precut quartz vanity top, backsplash, sinks, cabinet hardware
- Convenient tilt-down drawer under each basin for storing smaller, frequently-used items
- Two full-extension 17" (432 mm) drawers with soft-close side-mount slides
- Three-way adjustable slow-close door hinges for easy cabinet access
- 20-1/2" (521 mm) cabinet interior provides ample storage space
- Finish-matched cabinet interior offers generous clearance for plumbing
- Vanity top has 8" (203 mm) widespread faucet holes; requires deck-mount faucets (sold separately)
- Brushed Nickel hardware included on White, Atmos Grey, and Carbon Oak vanities, and Matte Black hardware on Light Oak vanities.
- White quartz (GWT) vanity top and backsplash add beauty and long-lasting durability

#### Material

- Vitreous china sinks
- Solid wood and moisture-resistant MDF
- Vitreous china sink

#### Installation

- Separate vanity top makes for simplified installation
- Easy installation – no special tools required

#### Recommended Products/Accessories

K-38554 4" x 21-11/16" quartz side splash

#### Optional Products/Accessories

K-33585 Drawer organizer set



#### Codes/Standards


ASME A112.19.2/CSA B45.1

#### KOHLER® One-Year Limited Warranty

See website for detailed warranty information.

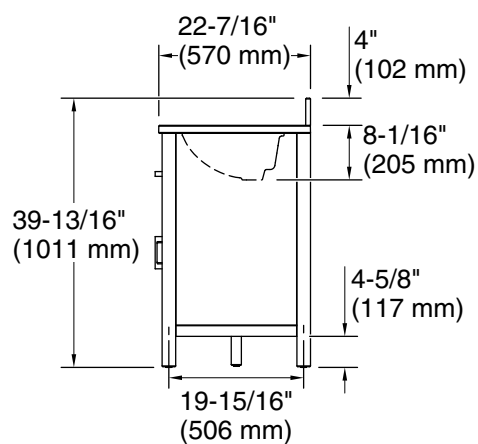
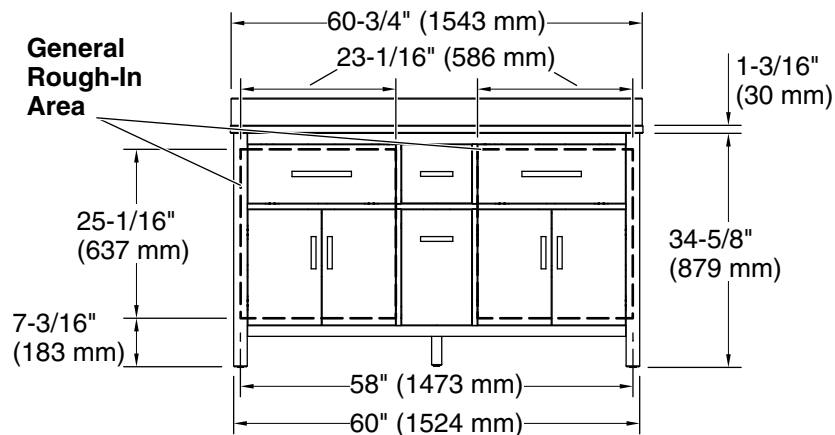
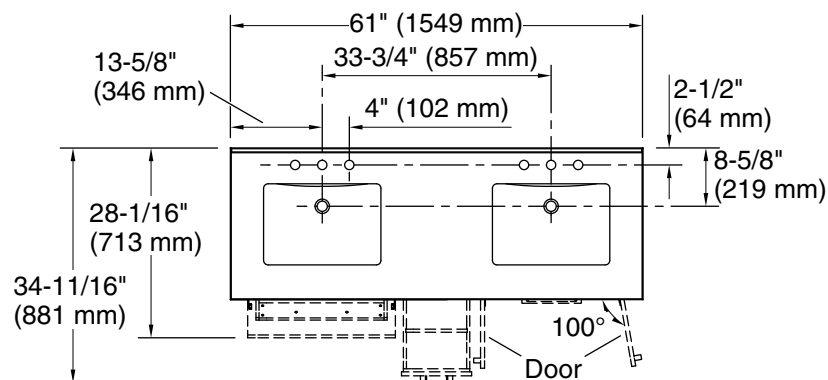
#### Available Colors/Finishes

*Color tiles intended for reference only.*

Color	Code	Description
	0	White
	BWK	Carbon Oak
	WEK	Light Oak
	AGA	Atmos Grey



**Kresla®**  
60" bathroom vanity cabinet with sinks and quartz top  
**K-40641-BD1**



**Technical Information**

All product dimensions are nominal.

Lighting included: No

**Notes**

Install this product according to the installation instructions.

Select the type of fastener based upon the wall material. Two 250 lb (113.4 kg) minimum load bearing fasteners are recommended.