

DESCRIPTION

Complete HEU system with battery-powered, sensor-activated Sloan ECOS® urinal flushometer with Smart Sense Technology™ and vitreous china urinal.

Flush Cycle

Model WEUS-1000.1401-0.125 ECOS
(0.125 gpf/0.5 Lpf)

Code: 10001401



SPECIFICATIONS

Quiet, exposed, chrome plated urinal flushometer for either left or right hand supply with the following features:

Flushometer

- ADA Compliant Sloan ECOS® battery-powered infrared sensor for automatic “No Hands” operation
- Reduces water usage up to 80% over standard sensor urinal
- Engineered Metal Cover with replaceable Lens Window
- Optional Courtesy Flush® Override Button
- Four (4) Size AA Batteries factory installed
- Infrared Sensor Range Adjustment Screw
- Initial Set-up Range Indicator Light (first 10 minutes)
- 3/4” I.P.S. Screwdriver Bak-Chek® Angle Stop
- Free spinning, Vandal Resistant Stop Cap
- High Efficiency pressure compensating cartridge assembly
- Latching Solenoid Operator
- User friendly 1-2 second Flush Delay
- Synthetic rubber seals for chloramine resistance
- High back pressure vacuum breaker flush connection with one-piece bottom hex coupling nut
- Spud coupling and flange for 3/4” Top Spud
- Sweat solder adapter w/cover tube and cast wall flange w/set screw
- Infrared sensor with Multiple-focused, Lobular sensing fields for high and low target detection
- High copper, low zinc brass castings for dezincification resistance
- Fixed metering bypass and no external volume adjustment to ensure water conservation
- Stop seat and vacuum breaker to be molded from PERMEX® rubber compound for chloramine resistance
- Valve Body, Cover, Tailpiece and Control Stop shall be in conformance with ASTM Alloy Classification for Semi-Red Brass. Valve shall be in compliance to the applicable sections of ASSE 1037/ ASME A112.19.2/CSA B45.1

Urinal

- Wall hung vitreous china
- Washdown flushing action
- 3/4” I.P.S. top spud inlet
- 2” NPT outlet flange
- All mounting hardware included
- Vandal resistant strainer assembly included
- 100% factory flush tested & integral flushing rim
- Compliant to the applicable sections of ASME A112.19.2/CSA B45.1
- Carrier not included
- Compliant with Buy American Act when purchased as a combination

FEATURES

Automatic

Sloan ECOS® electronic flushometers are activated via multi-lobular infrared sensor. Sloan ECOS® electronic urinal flushometers are available without an override button to eliminate unnecessary casual activation.

Functional & Hygienic

Touchless, sensor operation eliminates the need for user contact to help control the spread of infectious diseases. The Sloan ECOS® flushometer is also provided with an optional Override Button to allow a “Courtesy Flush®” for individual user comfort.

Smart Sense Technology

The Sloan ECOS® flushometer is equipped with Smart Sense Technology™ which applies extended range and logic techniques to significantly reduce water usage in high use urinal applications; such as when a continuous line of people, also known as a queue, forms. In fact during continuous queue, regardless the number of users, the maximum amount of water used is 2.0 gallons or less. Please contact Sloan for specific Details.

Warranty

3 year (limited)



Meets the American Disabilities Guidelines and ANSI A117.1 requirements when installed according to these requirements.

NOTE: Plumbing System Requirements

- ✓ Minimum **Flowing** Pressure: 25 PSI
- ✓ Maximum Fixture Static Pressure: 80 PSI

| | |
|--|----------|
| This space for Architect/Engineer approval | |
| Job Name | Date |
| Model Specified | Quantity |
| Variations Specified | |
| Customer/Wholesaler | |
| Contractor | |
| Architect | |



SLOAN

Sloan Headquarters
10500 Seymour Avenue
Franklin Park, IL 60131
Phone: 1-800-982-5839
Fax: 1-800-447-8329
www.sloanvalve.com

DESCRIPTION

Complete HEU system with battery-powered, sensor-activated Sloan ECOS® urinal flushometer with Smart Sense Technology™ and vitreous china urinal.

Flush Cycle

Model WEUS 1000.1401-0.125 ECOS
(0.125 gpf/0.5 Lpf)

ELECTRICAL SPECIFICATIONS

• **Control Circuit**

- Solid state
- 6 VDC input
- 8 second arming delay
- 72 hour Sentinel Flush

• **Sloan ECOS® Sensor Type**

Active infrared

• **Sloan ECOS® Sensor Range**

Nominal 15" – 30" (381 mm – 762 mm),
Adjustable ± 8" (203 mm)

• **Battery Type**

(4) AA Alkaline

• **Battery Life**

3 Years @ 4,000 flushes/month

• **Indicator Lights**

Range adjustment/low battery

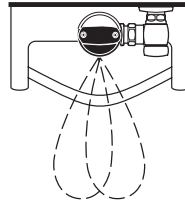
• **Valve Operating Pressure (Flowing)**

15 – 100 psi (104 – 689 kPa)

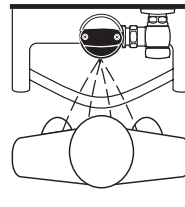
• **Sentinel Flush**

Once every 72 hours after the last flush

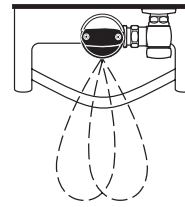
OPERATION



1. A continuous, invisible light beam is emitted from the Sloan ECOS sensor.

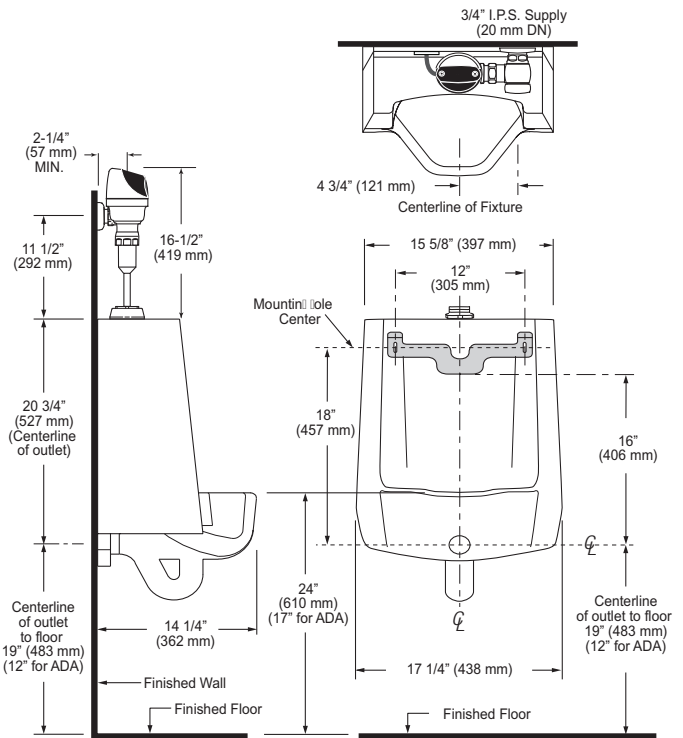
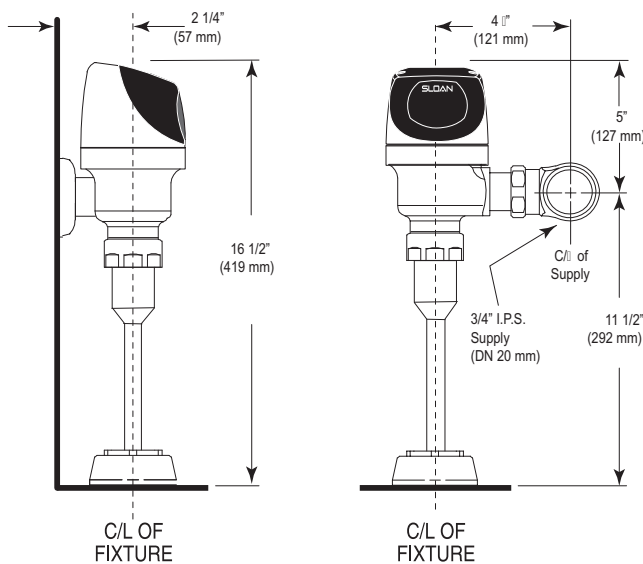


2. As the user enters the beam's effective range (15" to 30") the beam is reflected into the Sloan ECOS scanner window and transformed into a low voltage electrical circuit. Once activated, the output circuit continues in a "hold" mode for as long as the user remains within the effective range of the sensor.



3. When the user steps away from the Sloan ECOS sensor, the sensor initiates an electrical signal that operates the solenoid. This initiates the flushing cycle to flush the fixture. The circuit then automatically resets and is ready for the next user.

DIMENSIONS/ROUGH-IN



NOTE: All vitreous china dimensions shown in these drawings are nominal. Dimensions can vary within the tolerances established in the governing ASME A112.19.2/CSA B45.1 standard. Please take this into consideration when planning rough-in and plumbing layouts.