



MODEL: S300-2E-Q S500-5E-Q S1000-10E-Q
 S-L/R (Less Refrigeration)

Free-Standing Cooler



These water coolers are certified to NSF/ANSI 61.

STORAGE TANK

Non-pressurized stainless steel evaporator/storage tank for long life. Waterways are certified to NSF/ANSI 61, far exceeding the requirements of the Safe Drinking Water Act.

REFRIGERATION SYSTEM

Hermetically sealed, positive start compressor with lifetime lubrication and built-in overload protection, efficient capillary sizing, large capacity dryer-strainer, and self-lubricated fan cools copper/aluminum condenser. System uses R134A refrigerant. Protected by Halsey Taylor's Limited 5 Year Warranty.

VENTILATION

Insure proper ventilation by maintaining 6" (152mm) minimum clearance from cabinet louvers to wall.

SUGGESTED SPECIFICATIONS

Shall deliver () GPH of 50° F water at 90° F ambient and 80° F inlet water. Shall have stainless steel basin with fixed drain strainer. Bubbler shall be two stream, mound-building type. Separate valve and automatic stream regulator shall be mounted within cabinet. Refrigeration system shall employ high efficiency, positive start compressor using R134A, non-pressurized tank with totally encapsulated insulation and be controlled by positive sensing thermostat. The manufacturer shall certify the unit to meet the requirements of NSF/ANSI 61, and the Safe Drinking Water Act. Unit complies with ARI Standard 1010.

NOTE: Continued product improvement makes specifications subject to change without notice. See Halsey Taylor website for most current spec sheet.



GENERAL

Self-contained, electric refrigerated, free-standing water cooler designed to be easily accessible to able-bodied individuals. Unit is certified to NSF/ANSI 61 and meets requirements of the Safe Drinking Water Act. Unit provides 50° F water at 80° F inlet water and 90° F ambient.

CABINET

Heavy-gauge vinyl clad steel. Resistant to wear, moisture, perspiration, heat, and sunlight. Unit mounts flush against wall for a cleaner, more attractive appearance. Optional Stainless Steel is available.

COOLER TOP

Non-corrosive stainless steel cooler top, number 300 series with satin finish resists stains and corrosion and is easy to maintain. Anti-splash ridge reduces splatter. Contoured to insure proper drainage.

BUBBLER

Exclusive one-piece, chrome-plated two-stream mound-building bubbler with non-removable anti-squirt feature and integral hood insures a satisfying drink of water.

AUTOMATIC STREAM HEIGHT REGULATOR

Self-closing assembly is located inside unit to prevent tampering. Unit resists corrosion and liming. A constant stream height is automatically maintained under line pressures that vary from 20 to 105 psi.

PLUMBING CONNECTIONS

Waste and supply lines secured to back of cabinet. Waste 1/4" Supply 3/8" tubing.

INLET STRAINER

Easily cleaned in-line strainer screen traps particles of 140 microns or larger before they enter the waterway.

TEMPERATURE CONTROL

Positive sensing thermostat for controlling temperature of storage tank water. Factory set at 50° F Adjustable ± 5° F.

Standard Finish is Platinum Vinyl

Optional Finishes (extra cost)

All Stainless Steel

Optional Accessories (extra cost)

Glass Filler Kit

Sump Pump Kit

Vandal-Resistant Kit

Water Filter

Easy-Flex™ Bubbler

Trap and service stop not included.

JOB NAME: _____

ENGINEER/CONTRACTOR NAME: _____

APPROVAL: _____
DATE: _____

SD - ECONOMY SERIES

Model No.	GPH Capacity Cooled to 50° F*				Base Rate Cap.	F.L. Amps	Shipping Weight lb.	Rated Watt Usage
	Ambient Air Temp							
	70°F	80°F	90°F†	100°F				
S300-2E-Q	3.6	3.3	3.0	2.7	3.0	2.5	54	230
S500-5E-Q	6.1	5.5	5.0	4.5	5.0	2.5	60	230
S1000-10E-Q	11.9	10.8	9.8	8.8	9.8	5.8	69	535

* With projector service and tap water at 80° F

† UL listed and complies with ARI Standard 1010



**S300-2E-Q, S500-5E-Q,
S1000-10E-Q, S-L/R**

**Economy Free-Standing
Cooler**

(CONTINUED)

PLUMBING CONNECTIONS

Enter directly into cabinet. Waste 1 1/4".
Supply 3/8" tubing.

Trap and service stop not included.

OPERATING PRESSURES

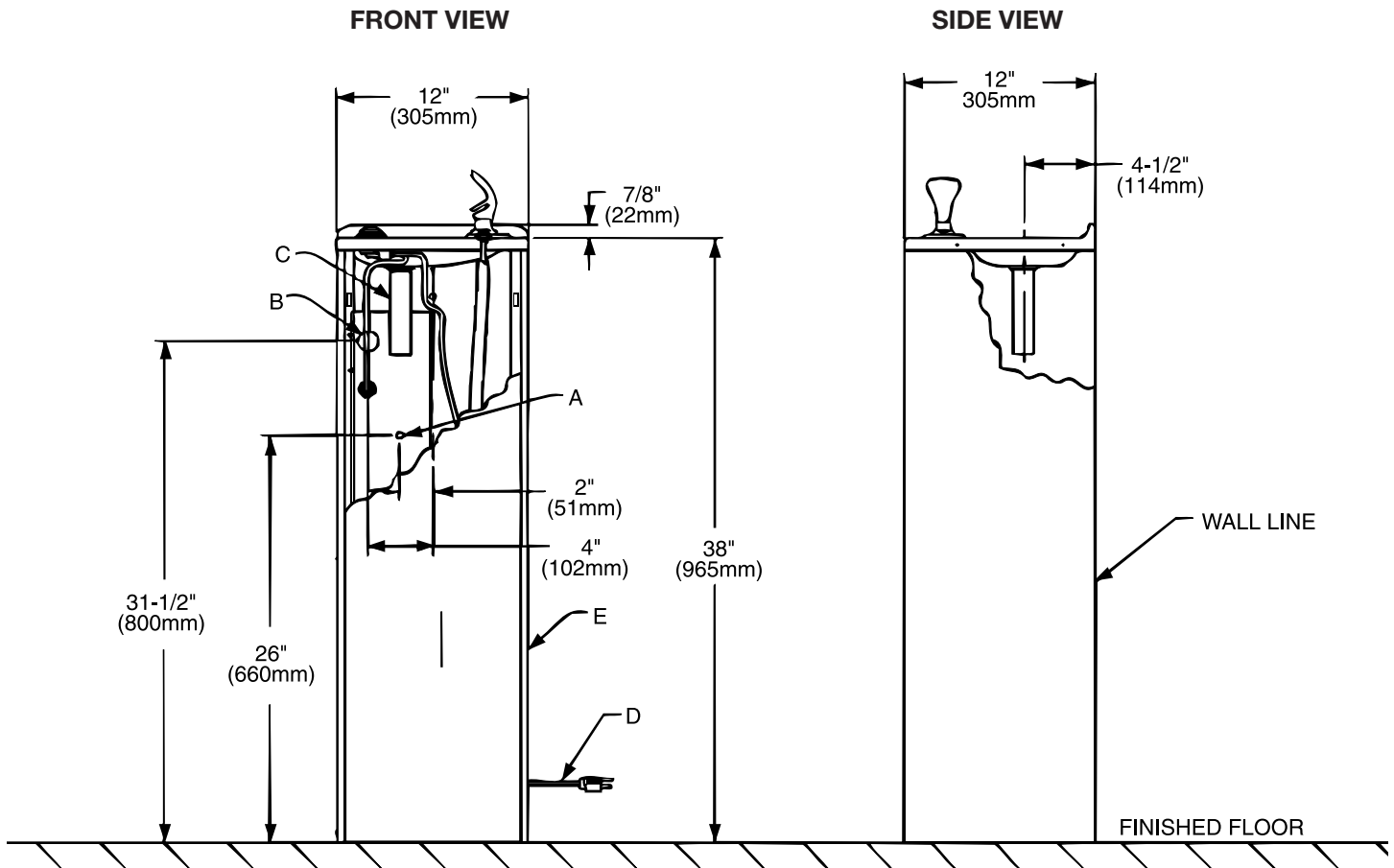
Supply water-105 psi maximum

ELECTRICAL

Furnished with plug-in, 3-wire grounding type service cord. Standard 120 volt, 60 Hz, single phase. Transformers available for other power supplies. (See capacity chart for amp rating.)

Install 120-volt receptacle, rated at 15-amp minimum to receive 3-wire parallel blade grounding type male plug.

Note: Installation outdoors in an unprotected environment is not recommended.



NOTE: A service supply stop must be installed at the cooler inlet line.

- A = Recommended water supply location 3/8" O.D. unplated copper tube connect stub 1-1/2" (38mm) out from wall shut off by others
- B = Recommended location for waste outlet 1-1/4" O.D. drain
- C = 1-1/4" Trap not furnished
- D = Electrical supply (3) wire recessed box
- E = Insure proper ventilation by maintaining 4" (102mm) (Min.) Clearance from cabinet louvers to wall