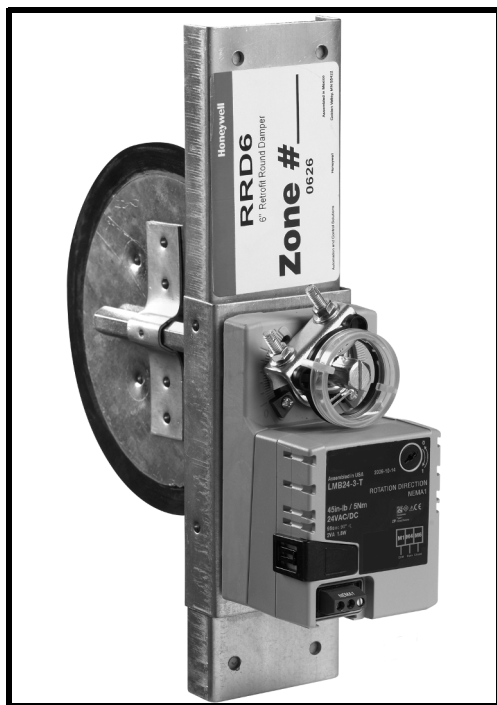


Retrofit Round Damper (RRD)

PRODUCT DATA



FEATURES

- Easy slide-in installation
- 2 VA allows for many dampers on one zone
- Available in 4 sizes to fit most rigid round branch ducts
- Quiet, long life motor automatically shuts itself off in full open and closed positions.
- Gaskets around blade and under motor housing for low internal leakage and very low external leakage
- Range stops with easy adjustment from top of motor
- Easy to see and reliable mechanical blade position indicator
- Easy to hook up with conventional thermostat wire
- Simple manual blade positioning with push button gear release

SPECIFICATIONS

IMPORTANT

The specifications given in this manual do not include normal manufacturing tolerances. Therefore, this unit may not exactly match the listed specifications. In addition, this product is tested and calibrated under closely controlled conditions, and some minor differences in performance can be expected if those conditions are changed.

APPLICATION

The RRD is a round damper that is easily inserted into rigid round ducts for retrofit zoning in forced air heating and cooling systems. It is available in four sizes for use in 5", 6", 7", and 8" ducts.

The damper is used with Honeywell TrueZONE®, EnviraZONE™ and similar zone control systems. The power open, power closed actuator draws 2 VA allowing multiple dampers per zone, but delivers high torque for reliable operation.

Contents

Application	1
Features	1
Specifications	1
Ordering Information	2
Installation	3
Wiring	3
Adjustments	4
Checkout	4
Troubleshooting	4



RETROFIT ROUND DAMPER (RRD)

Construction

Frame: 18 gauge G-60 or G-90 galvanized steel C channel with gasket, 20 gauge actuator mounting bracket.
 Blade: 20 gauge G-60 or G-90 galvanized steel surrounded by a black EPDM rubber gasket.
 Shaft: 1/2" hex damper blade shaft of cold rolled zinc electroplated steel. The shaft runs through a white nylon bushing.
 Sizes: 5.125", 6.125", 7.125", 8.125" diameters

Electrical Rating: 24 VAC, 50 or 60 Hz

Power Consumption: 1.5 watts running. Transformer sizing VA: 2.

Wiring Terminals: Screw terminals for 14 to 26 gauge wire labeled: M1 (Common), M4 (counter-clockwise, open), M6 (clockwise, closed)

Nominal Angular Rotation: 90°

Torque: 45 in. lb, (5 Nm)

Nominal Timing: 90 seconds independent of load

Ambient Ratings: -40° F (-40° C) to 122° F (50° C), 5-95% RH non-condensing

Mounting: Direct couple to 1/2" shaft

Agency Listings: NEMA 1, UL listed, class two

Dimensions: See Fig. 1-2

Weight:

- RRD5: 3.6 lb
- RRD6: 3.8 lb
- RRD7: 4.1 lb
- RRD8: 4.3 lb

Leakage (Closed): 3.4% at .5" WC

Pressure Drop (Open): <.05" WC

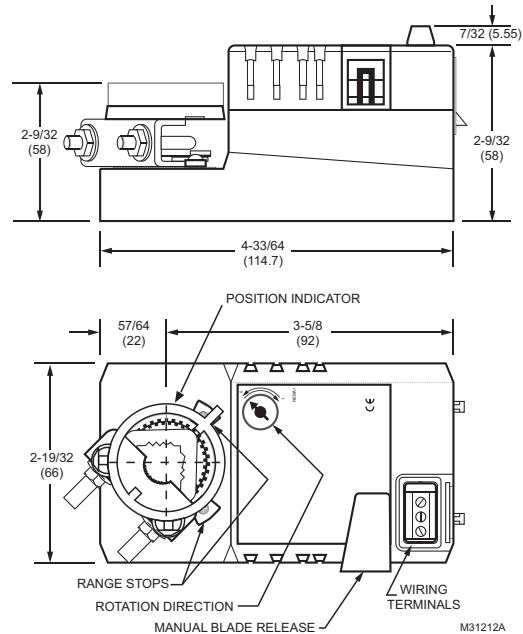


Fig. 1. Motor dimensions in in. (mm).

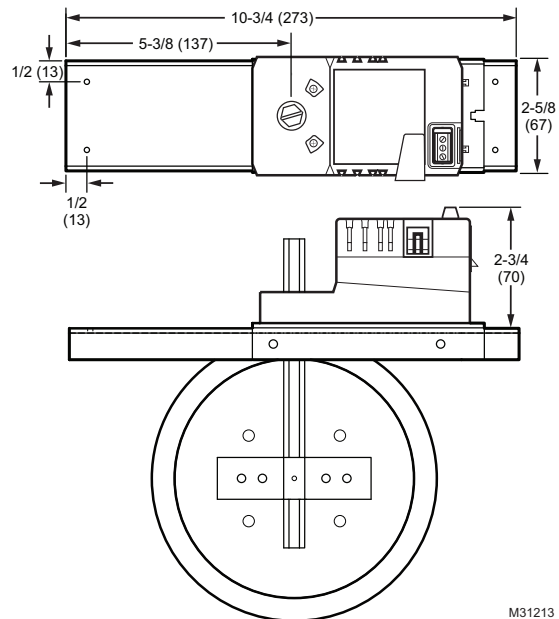


Fig. 2. RRD damper.

ORDERING INFORMATION

When purchasing replacement and modernization products from your TRADELINE® wholesaler or distributor, refer to the TRADELINE® Catalog or price sheets for complete ordering number.

If you have additional questions, need further information, or would like to comment on our products or services, please write or phone:

1. Your local Honeywell Automation and Control Products Sales Office (check white pages of your phone directory).
2. Honeywell Customer Care
1885 Douglas Drive North
Minneapolis, Minnesota 55422-4386

In Canada—Honeywell Limited/Honeywell Limitée, 35 Dynamic Drive, Toronto, Ontario M1V 4Z9.

International Sales and Service Offices in all principal cities of the world. Manufacturing in Australia, Canada, Finland, France, Germany, Japan, Mexico, Netherlands, Spain, Taiwan, United Kingdom, U.S.A.