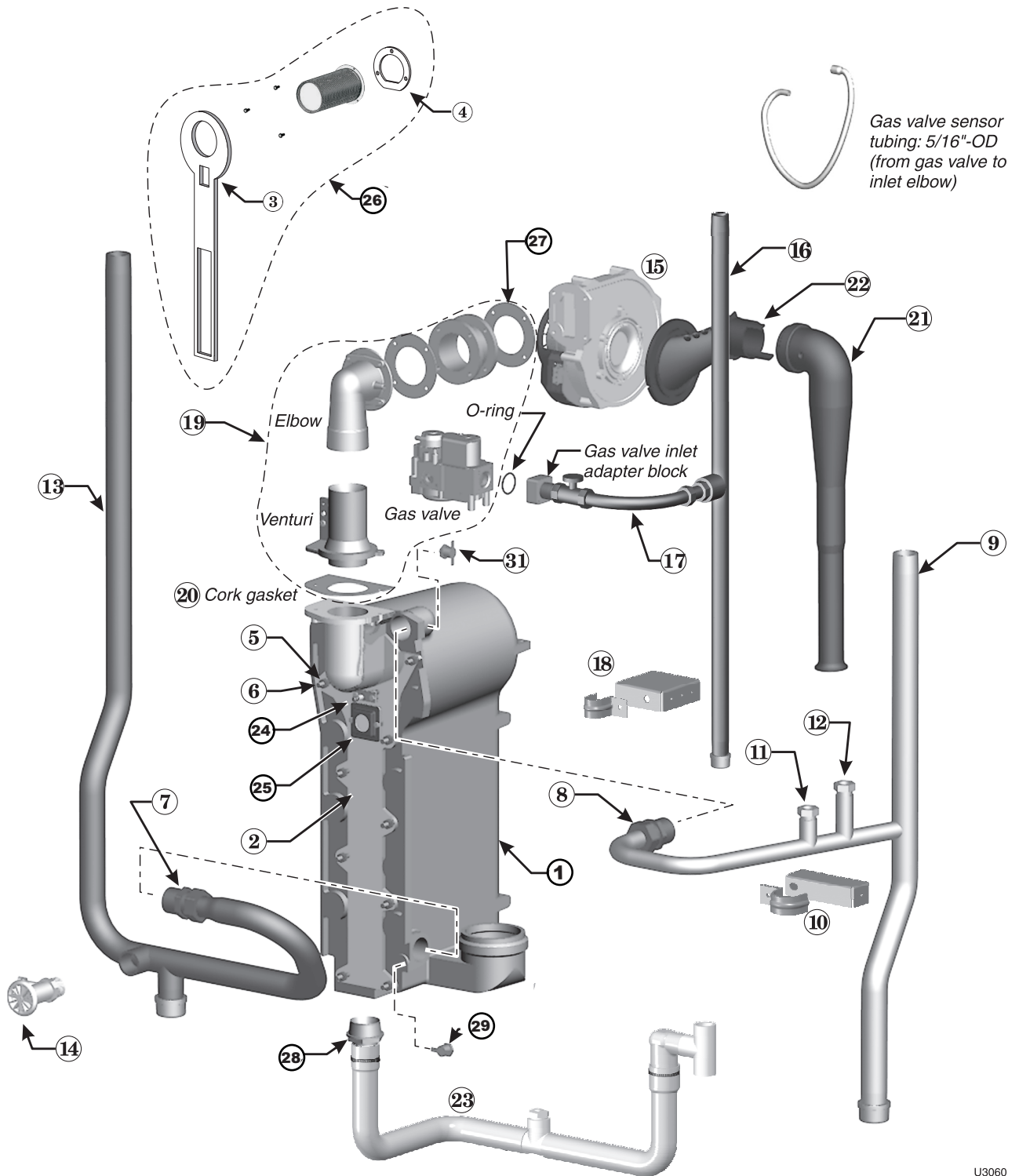


Ultra Series 3 / 3UE / CT - (Ultra-80/105) Heat Exchanger / Piping



GAS

U3060

**Ultra Series 3 / 3UE / CT - (Ultra-80/105)
Heat Exchanger / Piping Parts**

| Fig. No. | Part No. | Description | Boiler Models |
|----------|-------------|---|---------------|
| 1 | 383-500-612 | Heat Exchanger Replacement Kit - (Includes: Heat Exchanger, Cover Plate, Burner, Electrode, Water Sensors, Compression Fittings, Condensate Fitting, Gaskets, and Hardware) | 80NG |
| | 383-500-613 | | 80LP |
| | 383-500-614 | | 105 |
| 2 | 383-501-022 | Cover Plate Replacement Kit - (Includes: Cover Plate, Cover Plate Gasket, Burner Gasket, and Hardware) | 80/105 |
| 3 | 591-200-000 | Cover Plate Gasket/Insulation | 80/105 |
| 4 | 590-300-000 | Burner Gasket | 80/105 |
| 5 | 560-340-598 | Cover Plate Studs, M6, 1 Pitch | All |
| 6 | 561-928-449 | Cover Plate Nuts, M6, 1 Pitch | All |
| 7 | 383-500-260 | Water Compression Fitting, 28 mm | 80/105 |
| 8 | 564-100-002 | Water Compression Fitting, 22 mm | 80/105 |
| 9 | 383-501-036 | Supply Water Pipe Assembly - (Includes: Pipe, Temperature Well, Check Valve, Cap (Assembled) and Compression Fitting) | 80/105 |
| 10 | 383-500-615 | Supply Water Lower Pipe Clamp and Hardware | 80/105 |
| 11 | 383-500-270 | ½" N.P.T. Well For Temperature Gauge | All |
| 12 | 383-500-275 | Pressure/Temperature Gauge Check Valve | All |
| 13 | 383-501-037 | Return Water Pipe Assembly - (Includes: Pipe, Drain Valve, Cap (Assembled) and Compression Fitting) | 80/105 |
| 14 | 511-246-392 | Boiler Drain Valve, ¾" N.P.T. | All |
| 15 | 383-501-027 | Blower Assembly Kit - (Includes: Blower, Gasket, and Hardware) | 80/105 |
| 16 | 560-907-682 | Gas Pipe | 80/105 |
| 17 | 383-500-616 | Flexible Gas Line Section, (Includes-Shut-Off Valve,Block,O-Ring, and Screws) | 80/105 |
| 18 | 383-500-617 | Gas Pipe Lower Pipe Clamp And Hardware | 80/105 |
| N/S | 563-910-031 | Gas Valve Block (Includes Block, O-ring, and Screws) | All |
| 19 | 383-501-029 | Gas Valve/Venturi Kit - (Includes: Gas Valve, Venturi, 90° Elbow, Gaskets, and Hardware (Assembled)) (For LP boilers, Make Sure to Reinstall The Existing Propane Orifice) | 80 |
| | 383-501-030 | | 105 |
| 20 | 590-317-310 | Gasket Cork (For In Between Gas Valve Venturi and Burner Inlet) | All |
| 21 | 383-501-026 | Air Silencer Kit - Air Silencer and Gasket | 80/105 |
| 22 | 383-501-025 | Air Silencer Adapter Kit - Air Silencer Adapter and Hardware | 80/105 |
| 23 | 383-500-618 | Condensate Trap Kit - Condensate Trap, Hose Clamps, PVC Fittings and Gasket | 80/105 |
| 24 | 383-500-045 | Ignition Electrode Kit - Ignition Electrode, Suppressor, Gasket and Hardware | All |
| N/S | 383-500-619 | Ignition Cable Kit - Ignition Cable, Suppressor and Wire Tie | All |
| 25 | 383-500-020 | Inspection Glass Kit - Bracket, Glass, Gasket and Hardware | All |
| 26 | 383-501-032 | Burner Replacement Kit - Burner, Gaskets and Hardware | 80NG |
| | 383-501-033 | | 80LP |
| | 383-501-034 | | 105 |
| N/S | 383-900-090 | Burner Insert Repair Kit (Includes Drill, Tap, Inserts, Screws, Instructions) | All |
| 27 | 590-300-003 | Gasket Rubber, Blower | 80/105 |
| 28 | 561-200-000 | Condensate Fitting | 80/105 |
| 29 | 383-500-602 | Return/Supply Sensor Kit - (1) Sensor | All |
| N/S | 383-600-009 | Gas Valve "O" ring, Includes 10 "O" Rings | All |
| | 590-317-310 | Cork Gasket (Goes Between Gas Valve and Blower) | All |