



4675 W. 160th St.
Cleveland, Ohio 44135
Ph: (800) 321-9532
Fax: (800) 321-9535
www.dearbornbrass.com

SUBMITTAL SPECIFICATION

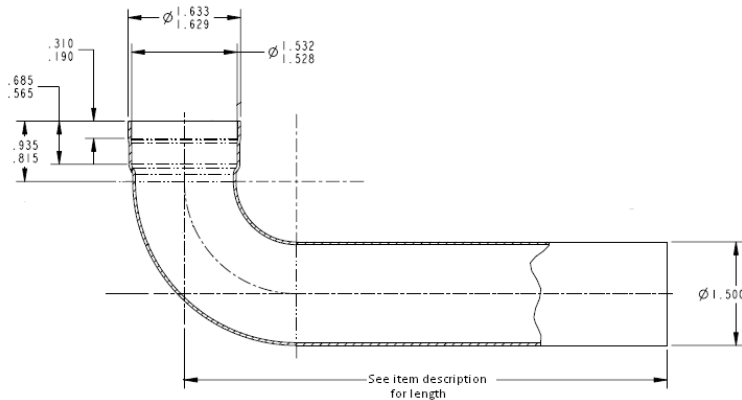
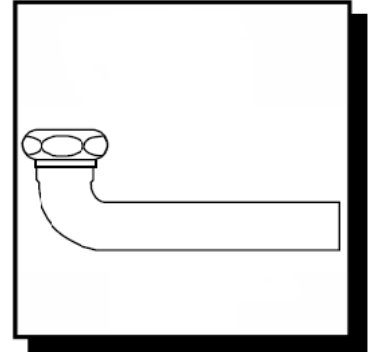
**BRASS TUBULAR
WASTE ARMS WITH SLIP JOINT CONNECTION**

Engineering Specification: Dearborn Brass 1-½" Waste Arm with Slip Joint Connection are designed for use in tubular drain applications. Available in 17, 20 or Budget Gauge Brass. Options include Brass Nut and various lengths for use with Center or End Outlet Waste Assembly.

Job Reference

DESCRIPTION

- Chrome Finish
- Waste Arm with Slip Joint Connection
 - Waste Arm
 - (1) Nut
 - (1) Rubber Washer



✓	Product No.	Description	Carton Quantity	Carton Weight (lbs)
	2137-1	7" Waste Arm for 16" Center Outlet – Budget Gauge	10	5
	2137B-1	11" Waste Arm for 24" Center Outlet – Budget Gauge	10	6
	2137C-1	15" Waste Arm for 16" Center Outlet – Budget Gauge	10	8
	137-1	7" Waste Arm for 16" Center Outlet – 20 Gauge	10	6
	H137-17-1	7" Waste Arm for 16" Center Outlet – 20 Gauge – Unfinished	10	4
	H137B-17-3	11" Waste Arm for 24" Center Outlet – 17 Gauge – Unfinished	6	4
	137C-1	15" Waste Arm for 16" End Outlet – 17 Gauge	10	12
	137CBN-3	15" Waste Arm for 16" End Outlet with Brass Nut – 20 Gauge – Unfinished	10	11
	137D-1	20" Waste Arm for 21" End Outlet – 20 Gauge	10	13
	137E-1	23" Waste Arm for 24" End Outlet – 20 Gauge	10	15
	137EBN-3	23" Waste Arm for 24" End Outlet with Brass Nut – 20 Gauge – Unfinished	10	15
	137-17BN-1	7" Waste Arm for 16" Center Outlet with Brass Nut – 17 Gauge	10	6
	137C-17-1	15" Waste Arm for 16" End Outlet – 17 Gauge	10	12
	137C-17BN-1	15" Waste Arm for 16" End Outlet with Brass Nut – 17 Gauge	10	13
	137C-17BN-3	15" Waste Arm for 16" End Outlet with Brass Nut – 17 Gauge – Unfinished	10	13
	137E-17-1	23" Waste Arm for 24" End Outlet – 17 Gauge	10	17
	137E-17BN-3	23" Waste Arm for 24" End Outlet with Brass Nut – 17 Gauge – Unfinished	10	17

Data is subject to manufacturing tolerances.