

CASE: Modern V-shape design with parts molded of GE Valox® polyester, in black textured finish. Heavy glass protected front firmly secured against rattles by spring action. **STEM:** For 31/2" stems only and ranges up to and including 300°F, the stem material is a precision die cast Zamac alloy. For ranges above 300°F, bulb chamber is a precision machined aluminum alloy with copper plated steel stem extension. *For Separable Socket connections only.* **LOCKING DEVICE:** A hand rotatable friction lock with the angle adjusting screw work independently to provide a full 360° positioning of thermometer case and stem. **ADJUSTABLE JOINT:** GE Valox finished to match case. **ACCURACY:** Within 1% of scale range. Silicone shock mounted for lasting durability. **SCALE:** White coated aluminum with permanently baked bold black markings. **FILL:** Blue liquid.

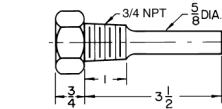
NOTE: Plastic Front as an option.

® Valox is a registered trademark of the General Electric Co.
 ® Vari-angle is a registered trademark of Weiss Instruments, Inc.

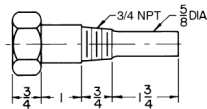
Scale Size	X
7"	9 3/4"
9"	11 3/4"

COMPLETE CATALOG NUMBER DEFINING AVAILABLE MATERIAL:

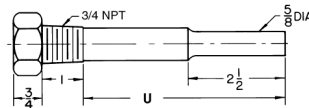
Brass ADD Suffix **BS**
 304SS ADD Suffix **SS**
 316SS ADD Suffix **316SS**
 EX: E35-75BS



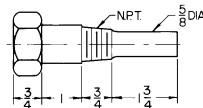
Standard Stem - E Series



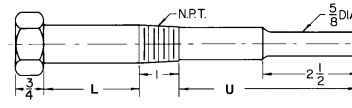
Long Stem - ER Series



Extension Neck - EN Series



Extension Neck - Short Stem - ESS Series



Extension Neck - Ext'n Stem - ENS Series

CAT. NO.	NPT
E35-75	3/4"

CAT. NO.	U	NPT
ER6-75	5	3/4"
ER9-75	8	3/4"
ER12-75	11	3/4"

CAT. NO.	L	U	NPT
EN6-75	2 1/2	2 1/2	3/4"

CAT. NO.	L	U	NPT
ESS35-75	1	1 3/4	3/4"

CAT. NO.	L	U	NPT
ENS9-75	2 1/2	5 1/2	3/4"
ENS12-75	2 1/2	8 1/2	3/4"

VARI-ANGLE INDUSTRIAL THERMOMETERS

QTY.	CAT. NO.	SCALE LGTH.	STEM LGTH	RANGE	TAG
	9VU35	9"	3 1/2"		
	9VU6	9"	6"		

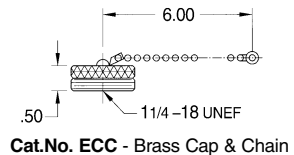
THERMOWELLS

QTY.	CAT. NO.	STEM LGTH.	INSERTION	NPT	MATERIAL	TAG
	E35-75BS	3 1/2"	2 1/2"	3/4"	BRASS	
	ER6-75BS	6"	5"	3/4"	BRASS	
	EN6-75BS	6"	2 1/2"	3/4"	BRASS	
	ESS35-75BS	3 1/2"	1 3/4"	3/4"	BRASS	

°F RANGES	SCALE DIVISION
40-0-110°F	2°
0-120°F	1°
0-160°F	2°
30-180°F	2°
30-240°F	2°
30-300°F	2°

STEM	CAT. NO.	CAT. NO.
3 1/2"	7VU35	9VU35
6"	7VU6	9VU6
9"	7VU9	9VU9
12"	7VU12	9VU12

NOTE: Dual and Centigrade Scales available.



Cat.No. ECC - Brass Cap & Chain

CUSTOMER _____

PROJECT _____

ENGINEER _____

PRO or P.O. NO. _____



WEISS INSTRUMENTS, INC.
 HOLTSVILLE, NEW YORK 11742

DESCRIPTION:

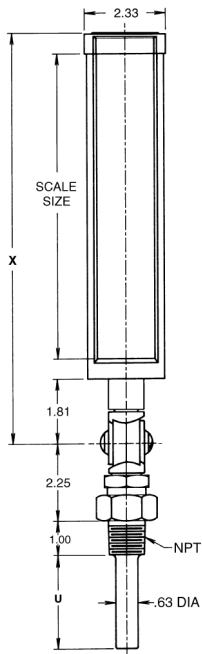
Vari-angle® Industrial Glass Thermometer

Full Conformance with ASME B.40-200

DRAWN BY:

DATE:

DRAWING:



CASE: Modern V-shape design, high pressure die cast aluminum in black textured finish. Heavy glass protected front firmly secured against rattles by spring action. **STEM:** For 31/2" stems only and ranges up to and including 300°F, the stem material is a precision die cast Zamac alloy. For ranges above 300°F, bulb chamber is a precision machined aluminum alloy with copper plated steel stem extension. *For Separable Socket connections only.* **LOCKING DEVICE:** A hand rotatable friction lock with the angle adjusting screw work independently to provide a full 360° positioning of thermometer case and stem. **ADJUSTABLE JOINT:** Die cast aluminum finished to match case. **ACCURACY:** Within 1% of scale range. Silicone shock mounted for lasting durability. **SCALE:** White coated aluminum with permanently baked bold black markings. **FILL:** Blue liquid. (Red liquid available) **TUBE:** Magnifying Glass Lens.

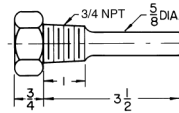
NOTE: Plastic Front as an option.

® Vari-angle is a registered trademark of Weiss Instruments, Inc.

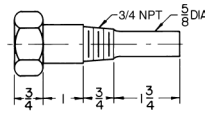
Scale Size	X
7"	9 3/4"
9"	11 3/4"

COMPLETE CATALOG NUMBER DEFINING AVAILABLE MATERIAL:

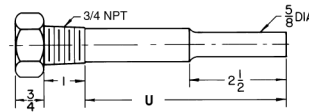
Brass ADD Suffix **BS**
 304SS ADD Suffix **SS**
 316SS ADD Suffix **316SS**
 EX: E35-75BS



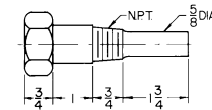
Standard Stem - E Series



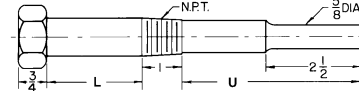
Long Stem - ER Series



Extension Neck - EN Series



Extension Neck - Short Stem - ESS Series



Extension Neck - Ext'n Stem - ENS Series

CAT. NO.	NPT
E35-75	3/4"

CAT. NO.	U	NPT
ER6-75	5	3/4"
ER9-75	8	3/4"
ER12-75	11	3/4"

CAT. NO.	L	U	NPT
EN6-75	21/2	21/2	3/4"

CAT. NO.	L	U	NPT
ESS35-75	1	13/4	3/4"
ESS35-50	1	13/4	1/2"

CAT. NO.	L	U	NPT
ENS9-75	21/2	51/2	3/4"
ENS12-75	21/2	81/2	3/4"

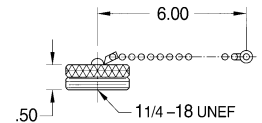
VARI-ANGLE INDUSTRIAL THERMOMETERS					
QTY.	CAT. NO.	SCALE LGTH.	STEM LGTH	RANGE	TAG
	A9VU35	9"	3 1/2"		
	A9VU6	9"	6"		

THERMOWELLS						
QTY.	CAT. NO.	STEM LGTH.	INSERTION	NPT	MATERIAL	TAG
	E35-75BS	3 1/2"	2 1/2"	3/4"	BRASS	
	ER6-75BS	6"	5"	3/4"	BRASS	
	EN6-75BS	6"	2 1/2"	3/4"	BRASS	
	ESS35-75BS	3 1/2"	1 3/4"	3/4"	BRASS	

°F RANGES	SCALE DIVISION
40-0-110°F	2°
0-120°F	1°
0-160°F	2°
30-180°F	2°
30-240°F	2°
30-300°F	2°
50-400°F	5°
50-550°F	5°

STEM	CAT. NO.	CAT. NO.
3 1/2"	A7VU35	A9VU35
6"	A7VU6	A9VU6
9"	A7VU9	A9VU9
12"	A7VU12	A9VU12

NOTE: Dual and Centigrade Scales available.



Cat.No. ECC - Brass Cap & Chain

CUSTOMER _____

PROJECT _____

ENGINEER _____

PRO or P.O. NO. _____



WEISS INSTRUMENTS, INC.
 HOLTSTVILLE, NEW YORK 11742

DESCRIPTION: Aluminum Case Design
Vari-angle® Industrial Glass Thermometer
 Full Conformance with ASME B.40-200

DRAWN BY: _____ DATE: _____ DRAWING: _____