

Brass manifold combination adapter fitting adapters

Project Information

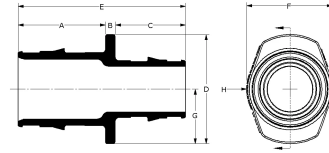
Job name:	Location:
Engineer:	Date submitted:
Contractor:	Submitted by:
Manufacturer's representative:	Approved by:

Technical data

Material	Brass
End type 1	ISO 228-G 1-1/4"
Temp/pressure ratings	73 °F (23 °C) at 160 psi (11 bar) 180 °F (82 °C) at 100 psi (6.9 bar) 200 °F (93 °C) at 80 psi (5.5 bar)
Prop 65 label required?	Yes

Product Information and application use

The Uponor Brass Manifold Combination Adapter/Fitting Adapter connects Uponor TruFLOW™ and Engineered Polymer (EP) Heating Manifolds to copper connections in radiant heating and cooling applications.



Part name	Part no.	A [Inch]	B [Inch]	C [Inch]	D [Inch]	E [Inch]	F [Inch]	G [Inch]	H [Inch]	J [Inch]	Weight per UOM [lbs/UOM]
Brass Manifold Adapter, R32 to 1 1/4" Adapter or 1 1/2" Fitting Adapter	A4123215	1.2	0.35	0.63	1.96	2.18	1.75	0.98	0.875	-	0.62
Brass Manifold Adapter, R32 x 1" Adapter or 1 1/4" Fitting Adapter	A4133210	1.05	0.35	0.635	1.96	2.035	1.75	0.98	0.875	-	0.62
Brass Manifold Adapter, R32 x 3/4" Adapter or 1" Fitting Adapter	A4143210	1	0.35	0.635	1.96	1.985	1.75	0.98	0.875	-	0.62

Part name	Part no.	End Type 2	End Type 3
Brass Manifold Adapter, R32 to 1 1/4" Adapter or 1 1/2" Fitting Adapter	A4123215	Sweat 1-1/4"	Sweat 1-1/2"
Brass Manifold Adapter, R32 x 1" Adapter or 1 1/4" Fitting Adapter	A4133210	Sweat 1"	Sweat 1-1/4"
Brass Manifold Adapter, R32 x 3/4" Adapter or 1" Fitting Adapter	A4143210	Sweat 3/4"	Sweat 1"

Installation

R32 threads into the Uponor TruFLOW and EP Heating Manifolds. Copper sweats to adapter or fitting adapter. For more information, refer to the Uponor Radiant Installation Handbook.

Related applications

Radiant Heating and Cooling Systems

Codes

IMC|IRC|NBC of Canada|UMC

Standards

CSA B137.5|R32:

Listings

cNSFus-rfh

Notes

Sweat to copper pipe or fittings

Footnotes

Contact information

Uponor Inc.
5925 148th Street West
Apple Valley, MN 55124
T 800.321.4739
F 952.891.2008

Uponor Ltd.
6510 Kennedy Road
Mississauga, ON L5T 2X4
T 888.594.7726
F 800.638.9517