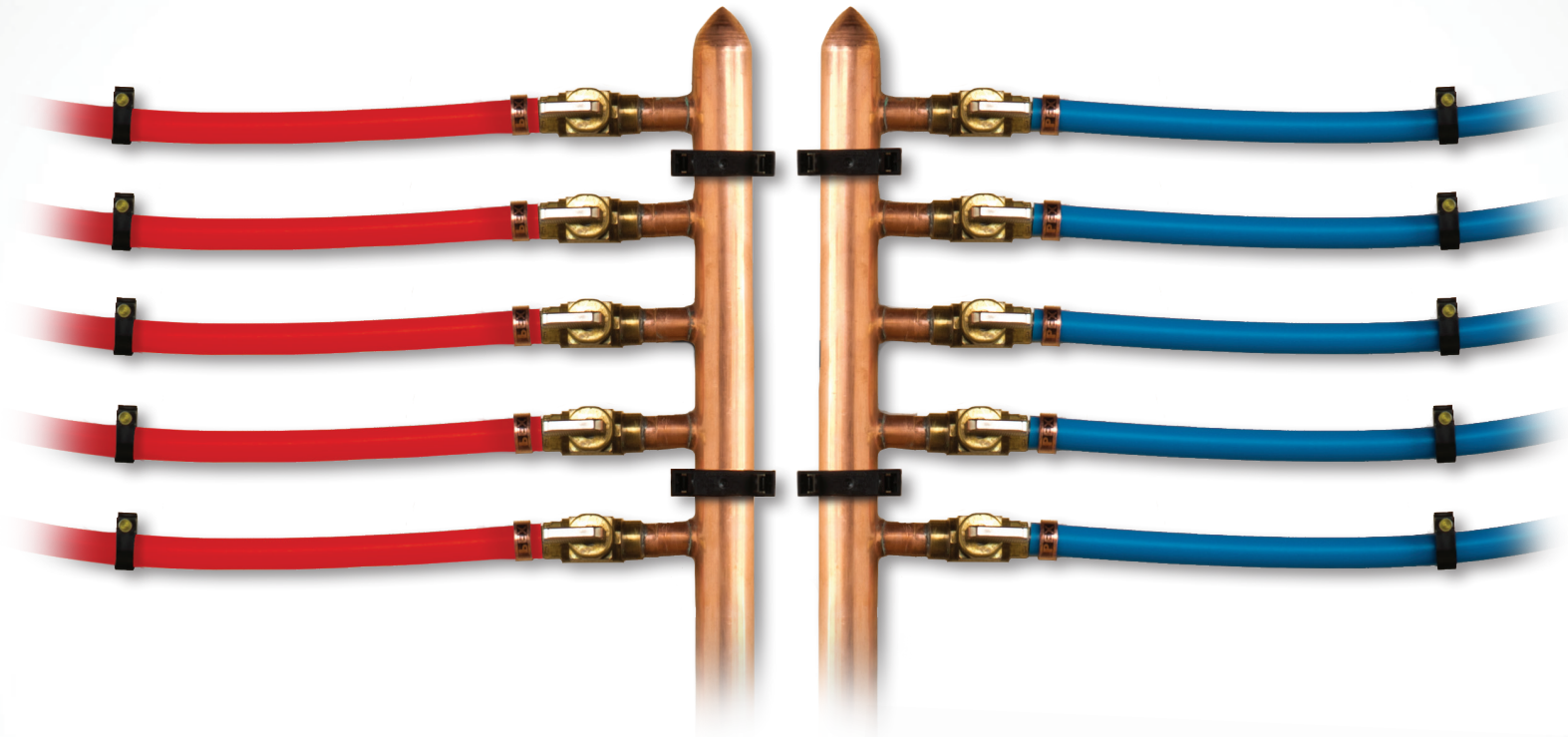


# BranchMaster™ Manifolds

▶▶ Distributing Water, Quality & Savings



## Labor & Material Savings

Decrease installation and material costs, reduce waste, and maintain quality and looks.

## Reduced Liability

Fewer connections behind the wall greatly reduce potential for leaks.

## Complete, Custom

All system connections. All materials. All configurations. Millions of possible customizations.

## Made in the USA

Manufactured in America with domestic material.

## Trusted, Lead-Free Solutions

Demanded by professionals everywhere for radiant heating and plumbing applications.



Supply

Drainage

Support

[www.siouxchief.com](http://www.siouxchief.com)

TAKE THE FIELD.



# Features & Benefits

## Labor & Material Savings

- Fast: Decreased installation times due to fewer fitting connections.
- Economical:
  - Fewer fittings reduce overall material costs.
  - Copper manifolds are less costly than many brass, stainless steel or PPSU manifold options.
- No Lead: Copper is inherently lead-free and is a cost-saving material.

## Reduced Liability

- Fewer fittings mean fewer chances for leaks, connection errors and costly repairs.
- Sioux Chief warranted product replaces on-the-job fabricated connections.

## Complete

- All common ASTM fitting system configurations are available.
- Available with and without valves, with spin-closed or open-end outlets, on different branch center lines, and more.
- More than 27 million custom options are available. Contact Sioux Chief to build your manifold.

## Made in USA



- 100% American made.
- 100% North American materials.
- Products are manufactured, inspected, tested, stocked and packed for shipping in Peculiar, Missouri.

## Trusted

- Sioux Chief has been manufacturing and selling manifolds since the early 1980's.
- Listed and approved.
- All manifolds are tested and inspected using the latest quality methods.



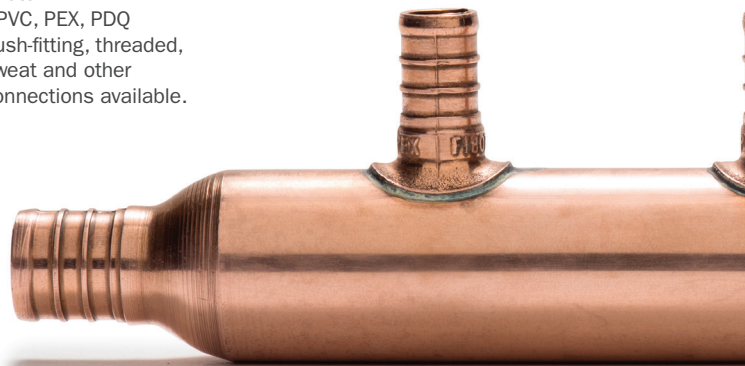
### Inlets

3/4" & 1" PEX ends readily available and in stock. Sioux Chief maintains the widest variety of manifolds in the industry.



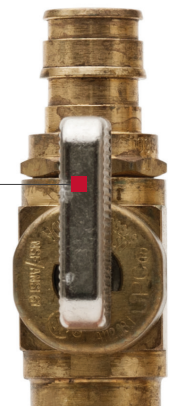
### Inlets

CPVC, PEX, PDQ push-fitting, threaded, sweat and other connections available.



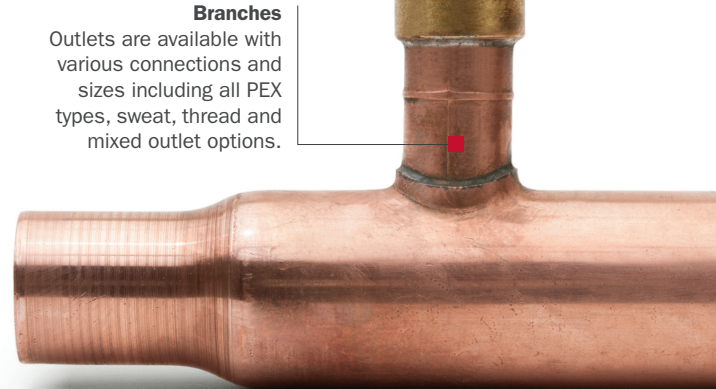
### Branches

Available with and without valves.



### Branches

Outlets are available with various connections and sizes including all PEX types, sweat, thread and mixed outlet options.



# REDUCED Liability & Leaks

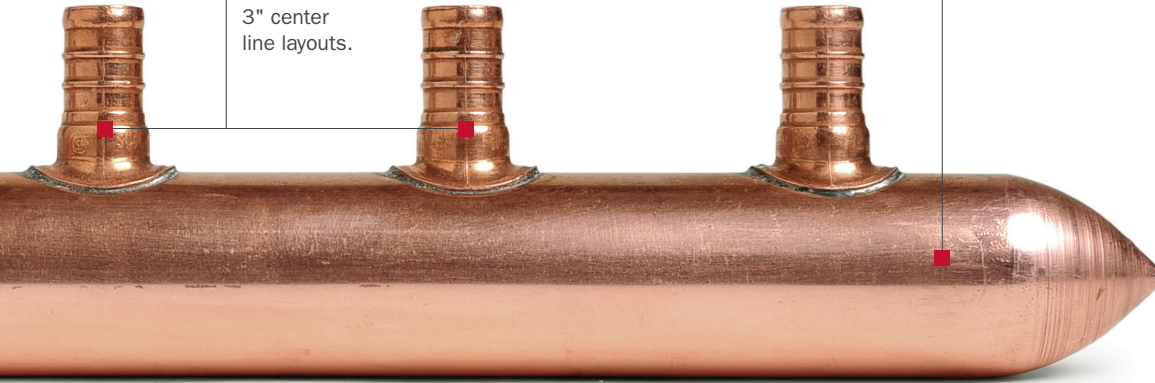


Sioux Chief BranchMaster™ manifolds greatly reduce the number of fittings behind the wall and potential for leaks.



**Centerlines**  
Manifolds are available with 2" and 3" center line layouts.

**Trunk**  
Up to 4" trunk size.

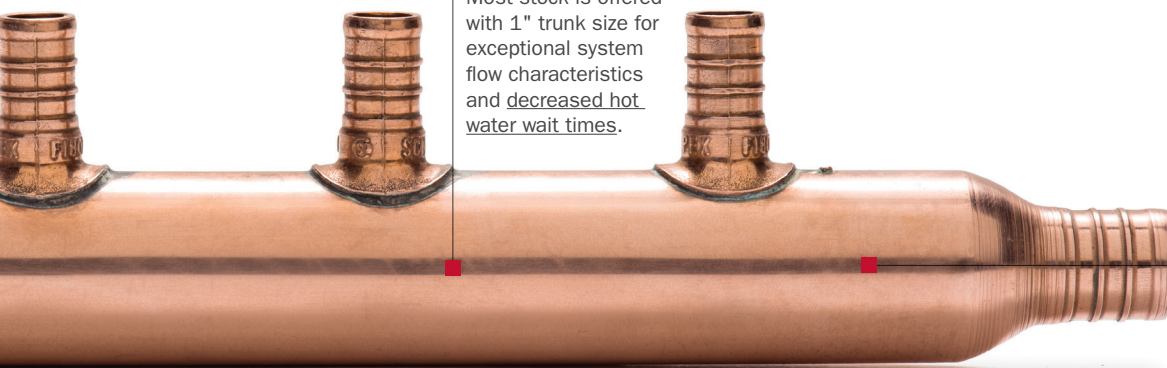


**Trunk**  
Most stock is offered with 1" trunk size for exceptional system flow characteristics and decreased hot water wait times.

**NO  
LEAD**

**Copper is:**

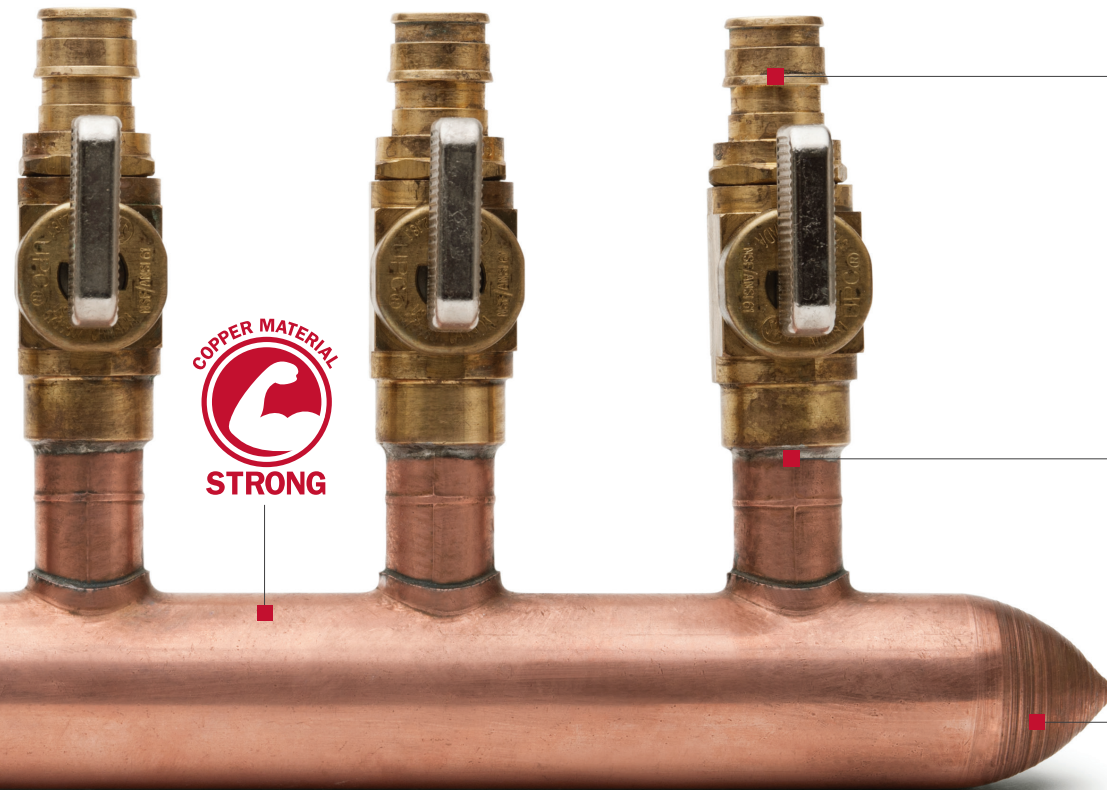
- Naturally No Lead
- Antimicrobial
- Dezincification resistant
- Stress corrosion cracking resistant



**Valves**  
Valved branch outlets are available with the option of various PEX types in standard or balancing valves.

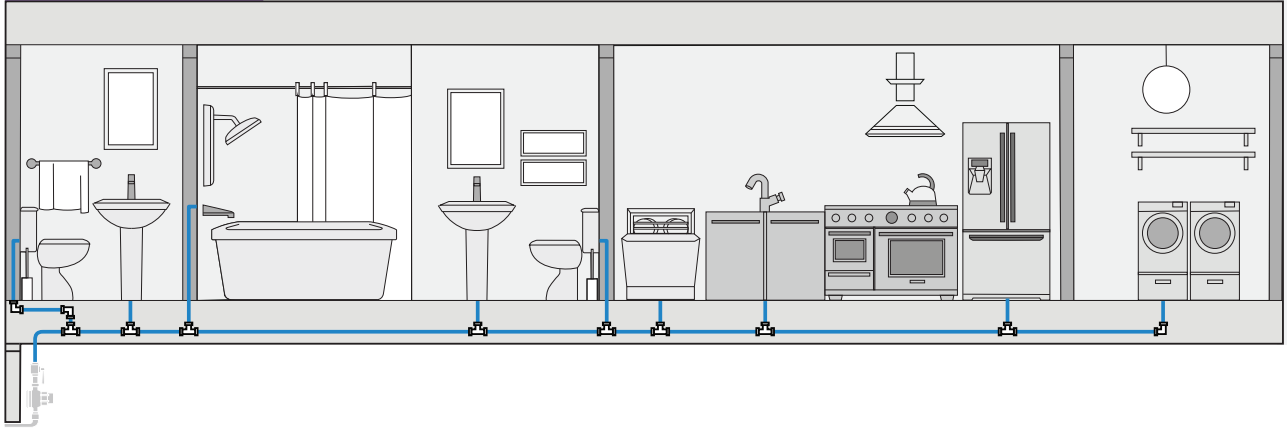
**Connections**  
Outlets are offered in lead-free brazed or soldered configurations.

**End Outlets**  
Leak-free spin closures, formed ends or optional system connection types provide the exact manifold necessary to complete any job.

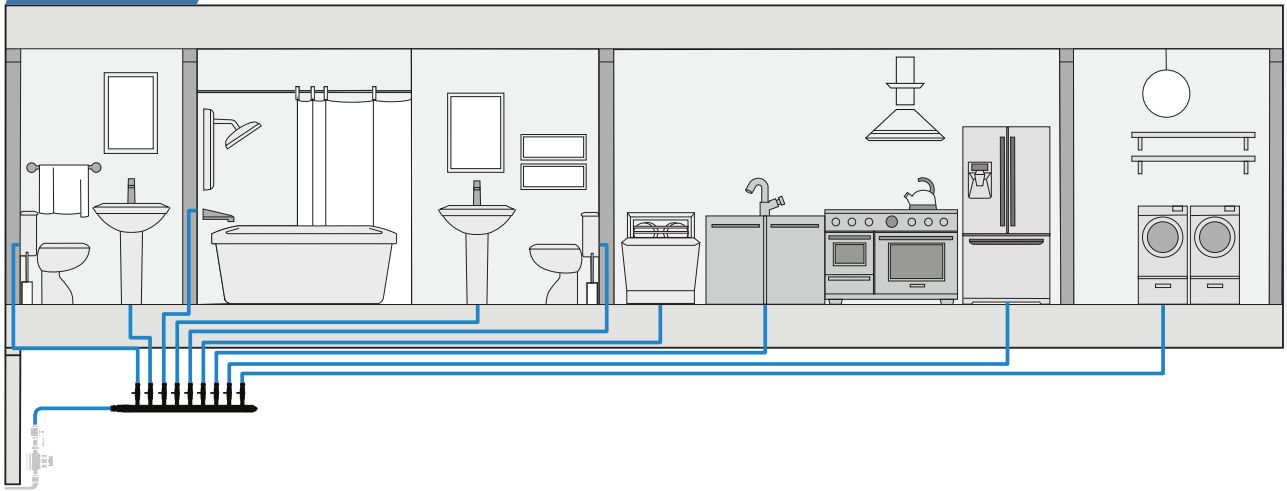


# Residential Plumbing Installation Layouts

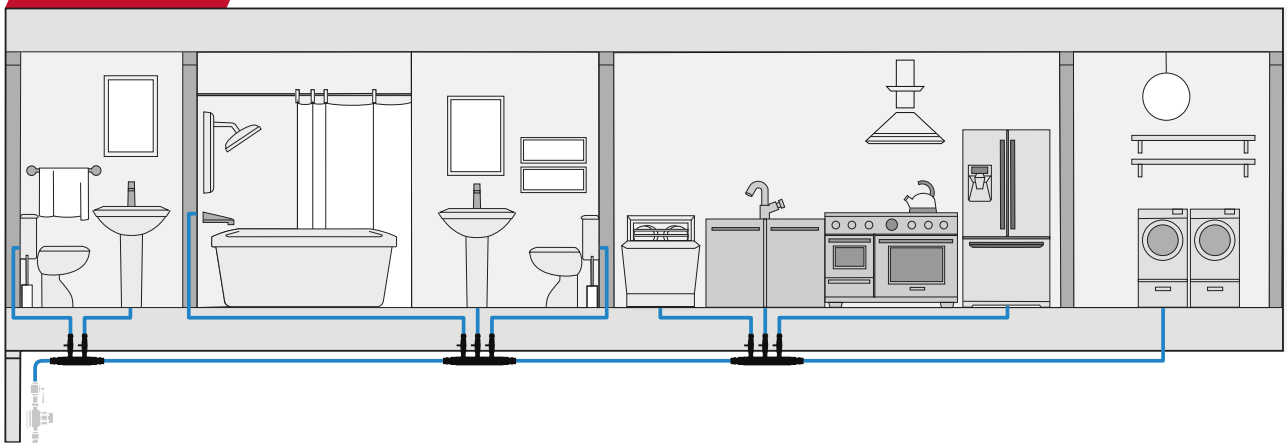
## Trunk & Branch



## Home Run



## Combination



No. of Fittings

Feet of Pipe

Connections

**Trunk & Branch**

**96**

**540**

**165**

No. of Fittings

Feet of Pipe

Connections

**Home Run**

**10**

**1,515**

**48**

No. of Fittings

Feet of Pipe

Connections

**Combination**

**16**

**637**

**59**

**Quality**



There are hundreds of thousands of Sioux Chief Branchmaster™ Manifolds installed and in service. All manifolds are Sioux Chief inspected, tested and approved.

**Green Plumbing Alternative**





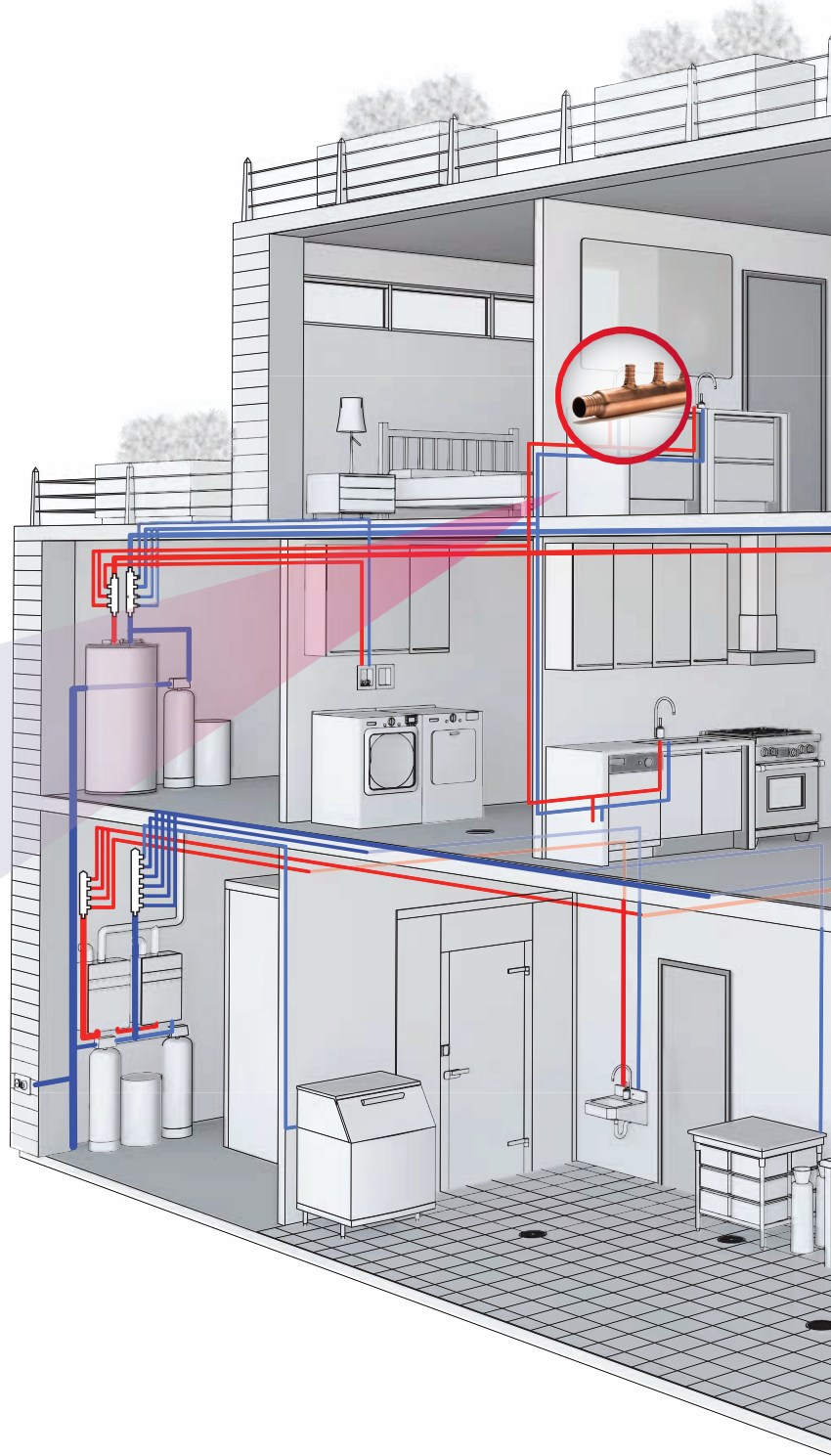
Sioux Chief's Green Plumbing Alternative is 100% lead-free. Less fittings used, less waste, and less water used.

# Combination System Benefits

**Combination Systems** combine the best features of a Home Run plumbing system with the best features of a Trunk and Branch plumbing system.

**This smarter choice:**

- Less material expense, especially in No Lead compliant systems.
- Requires half the installation time of traditional systems. 
- Requires fewer connections, which translates to fewer leak possibilities, fewer callbacks and fewer claims. 
- Exhibits increased flow characteristics, decreased hot water wait times and a decrease in system noise.



## No. of Fittings

Combination

16

Trunk & Branch

96

**Combination layout uses:**

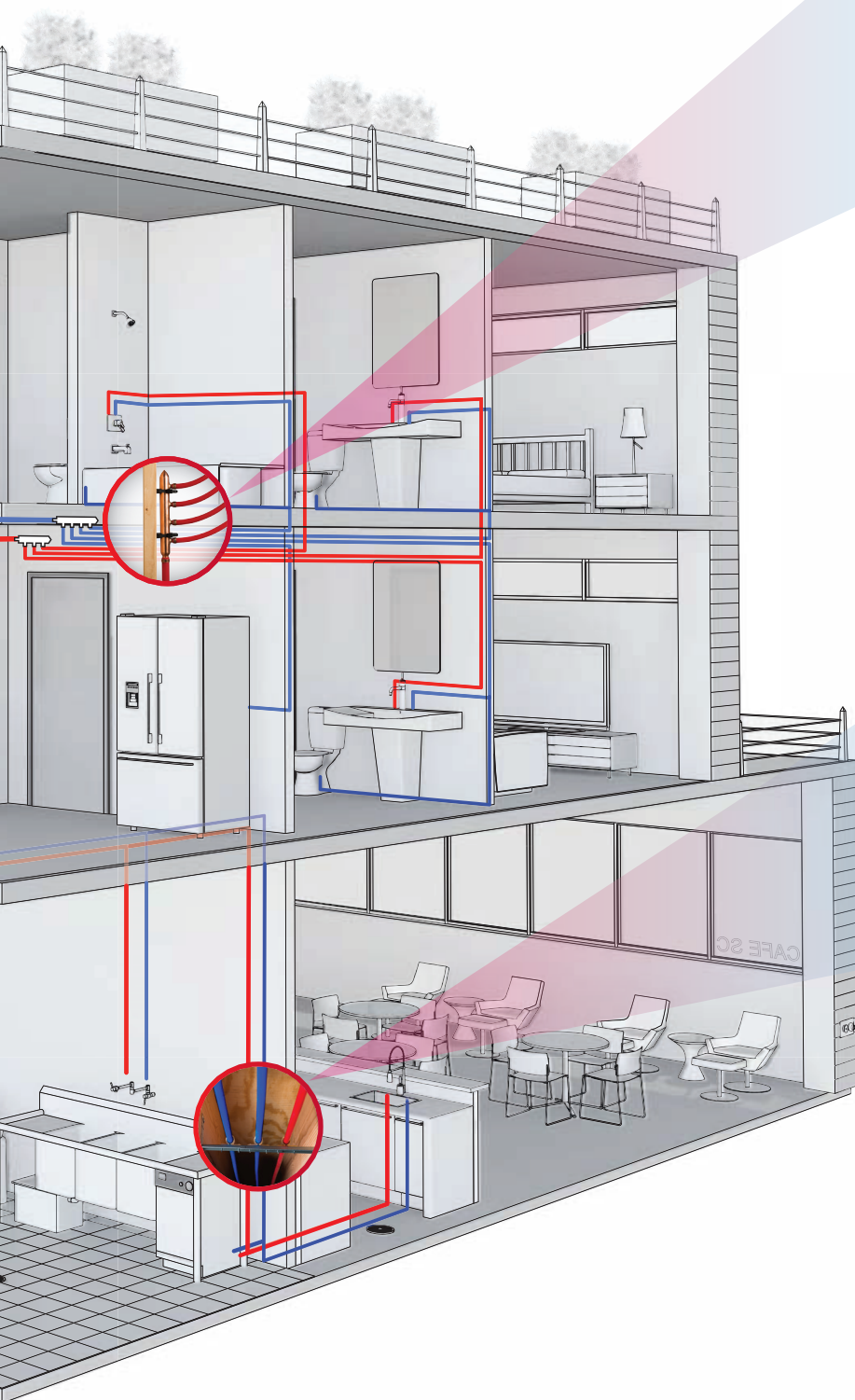
# 83%

- Fewer Fittings
- Fewer Variable Costs

“ We appreciate American-Made products and know our builders and home owners appreciate them as well. Sioux Chief’s products provide time saving, quality and domestically made solutions that allow us to compete and provide us with the quality we demand. ”



Steve McLaughlin  
Charlotte Mechanical, LLC



## Connections

Combination 59

Trunk & Branch 165

Combination layout uses:

65%

- Fewer Potential Leaks
- Fewer Connections
- Less Tool Wear

## Feet of Pipe

Combination 637 ft.

Home Run 1,515 ft.

Combination layout uses:

58%

- Fewer Feet of Pipe

# Over 27 Million Custom Options

## Trunk Types & Sizes



## Branch Types & Connection Sizes



## Branch Multiples



## Trunk Connection Options



## Custom Options

- Millions of custom options.
- Sioux Chief can build the manifold you need. Contact Sioux Chief to receive a quote.

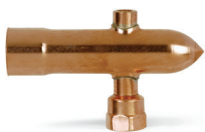


## Manifold Builder Form

Scan Sioux Chief's QR code to be directed to our custom Manifold Builder Form, and start saving with BranchMaster Manifolds today.

## Manifold Accessories & Options

### Manifold Endpiece



### Slab Manifolds



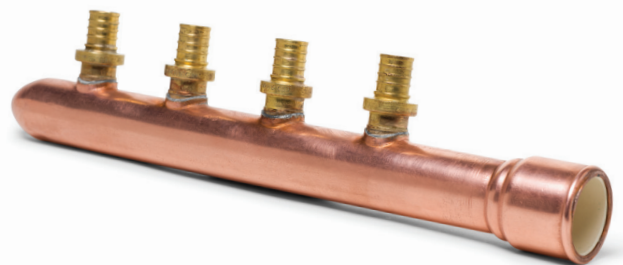
## Layout Options

- Available in multi-port tees (slab manifolds).

## Radiant Accessories

- End pieces are perfect for gauges or service points.

## Material Options



## PowerPEX™ Copper Manifolds

- The most economical industry manifolding option.
- The most economical plumbing system layout.
- Equalized flow to each fixture helps reduce pressure fluctuations that causes scalding.

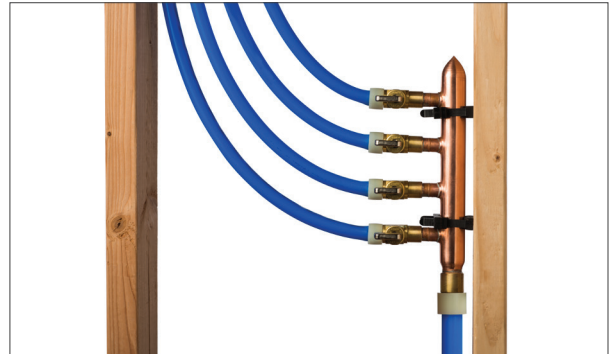


# Applications

## Primary Manifold

Primary manifolds act like a 'breaker box,' providing a central access point of a plumbing system. This ensures that a singular line can be isolated for service while also reducing the number of fittings behind the wall.

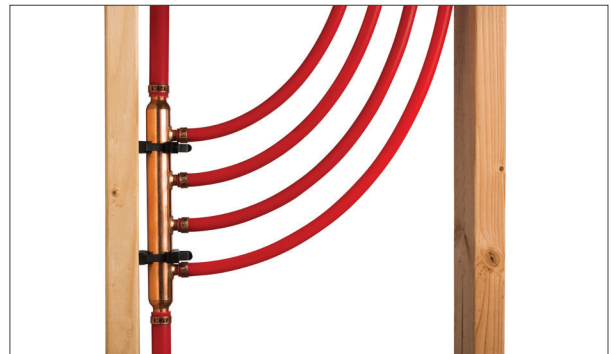
- Available with valves.
- Great for plumbing or radiant applications.



## Secondary Manifold

Secondary manifolds reduce the total feet of pipe, number of fittings and chance for leaks within a home.

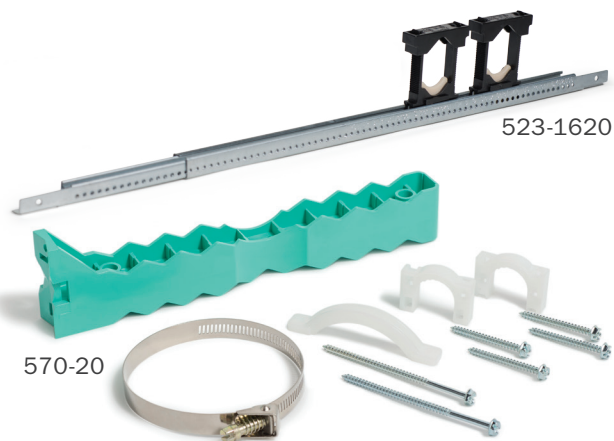
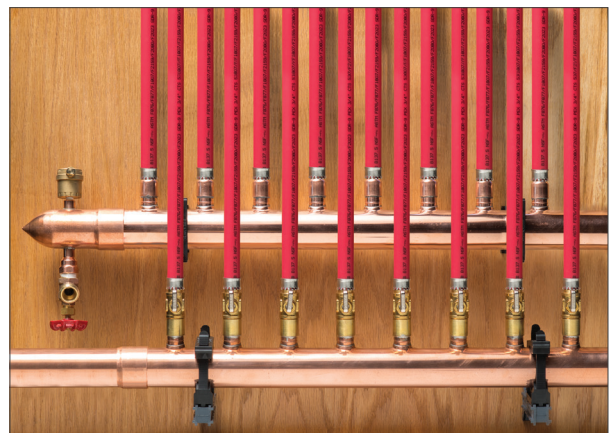
- Economically divide and distribute the water supply to a fixture group.
- Also known as multi-port tee or multi-outlet fittings.



## Radiant (Hydronic) Manifolding

Perfect for distributing hot water within flooring or to secondary radiators while providing a central service point for maintenance and repair.

- Various options and end outlet configurations available including options with gauges and FIP ports.
- Multiple bracketing options available for the most secure installation possible.



## Manifold Options

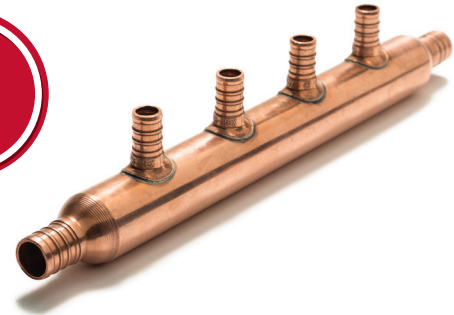
Sioux Chief is the only manufacturer offering all major PEX fitting systems, giving contractors the **power to choose**

the right system or mix of systems to fit their applications or comfort levels. Sioux Chief products are the definition of quality and carry a warranty to back that quality. Choose Sioux Chief as your partner and be certain of the best quality, the best warranty, the best availability, the most options and an unmatched commitment to American manufacturing.

### PowerPEX<sup>®</sup> ASTM F1807

# CRIMP

- Sioux Chief is the leading supplier of F1807 manifold options for plumbing or radiant applications.
- Manifolds for every application are in stock and readily available for your job.



### PowerPEX<sup>®</sup> ASTM F2080

# LOCK

- F2080 manifolds offer a reduced material investment while providing the most leak-proof PEX connection available.
- Fittings are designed with more sealing surface and more sealing barbs than all other common PEX systems for a redundant and robust fitting connection.



### PowerPEX<sup>®</sup> ASTM F1960 PEX-A

# GRIP

- F1960 manifolds offer a positive seal and permanent connection.
- F1960 system fittings offer an increased internal diameter for exceptional flow characteristics.

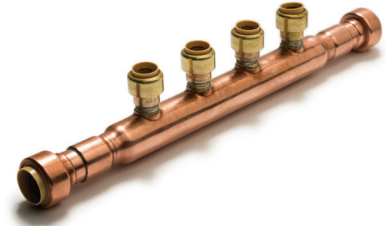


## Manifold Options cont'd

The BranchMaster product offering is **complete** and available with options to match any system configuration. Manifolds are **in stock** and readily available. Even if Sioux Chief does not carry stock of the manifold needed to complete a contractor's job, it can be made and ordered to the exact specifications needed. Start saving with one warranted, reduced liability of leak, no lead, compliant and MADE IN THE USA product.

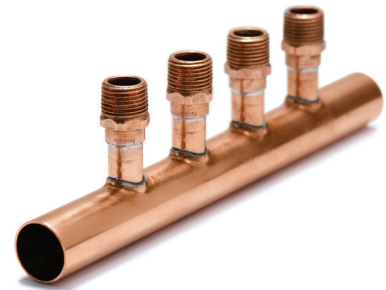
### ASSE 1061 PDQ™ Push-fitting

- Plumbing Done Quickly. Fast, quality and universally applicable to CTS tubing systems.
- The fastest plumbing possible is available in a warranted and domestic product from Sioux Chief.



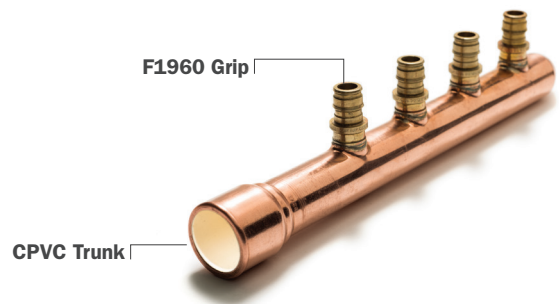
### FIP/Compression/MIP/Sweat/Press Fitting

- Manifolds for every application. Can be adapted to work with any plumbing system for a high-quality finish and a lifetime of service.



### Mixed System or Transition Manifolds

- Hybrid System Solution: Transition manifolds offer the perfect and warranted solution for changing from one supply pipe type to another.
- Mixed branches allow 3/4" & 1/2" fixture lines or optional 1/2" & 3/8" mixed PEX fixture lines.



### Warranty



Sioux Chief offers industry leading warranty and quality.

»» To learn more, visit [siouxchief.com](http://siouxchief.com)

# Sioux Chief has **OVER 300** different manifolds and accessories **IN STOCK**



Image is not representative of full line

Sioux Chief maintains copper manifold inventory for common  
**PLUMBING & RADIANT HEAT** applications...  
ready for immediate shipment to meet your demanding job deadlines.



#LT1-BranchMaster Manifolds

24110 South Peculiar Drive  
Peculiar, Missouri 64078  
P 1.800.821.3944  
F 1.800.758.5950

Check out our website at [www.siouxchief.com](http://www.siouxchief.com) for our current price list.

B.4/15 BranchMaster™ Manifolds

